

Product Information Sheet

COMMISSION DELEGATED REGULATION (EU) 2019/2015 with regard to energy labelling of light sources

Supplier's name or trade mark: BDSK Handels GmbH & Co. KG

Supplier's address: Importabteilung, Römerstraße 39, 4600 Wels, AT

Model identifier: 47200073-01

Type of light source:

Lighting technology used:	LED	Non-directional or directional:	NDLS
Light source cap-type (or other electric interface)	DC 60mA		
Mains or non-mains:	NMLS	Connected light source (CLS):	No
Colour-tuneable light source:	No	Envelope:	-
High luminance light source:	No		
Anti-glare shield:	No	Dimmable:	No

Product parameters

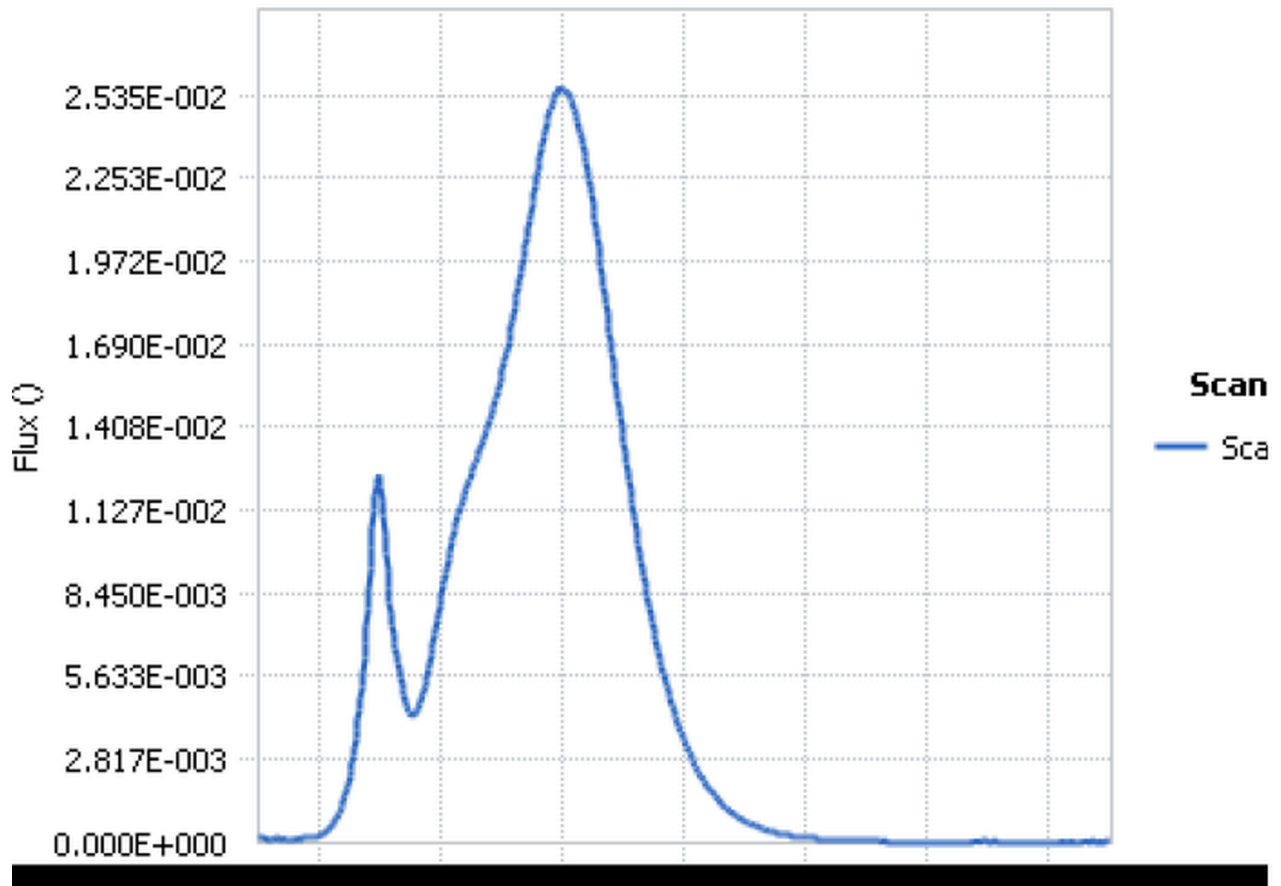
Parameter	Value	Parameter	Value
General product parameters:			
Energy consumption in on-mode (kWh/1000 h), rounded up to the nearest integer	12	Energy efficiency class	F
Useful luminous flux (ϕ_{use}), indicating if it refers to the flux in a sphere (360°), in a wide cone (120°) or in a narrow cone (90°)	1 250 in Sphere (360°)	Correlated colour temperature, rounded to the nearest 100 K, or the range of correlated colour temperatures, rounded to the nearest 100 K, that can be set	3 000
On-mode power (P_{on}), expressed in W	11,5	Standby power (P_{sb}), expressed in W and rounded to the second decimal	0,50
Networked standby power (P_{net}) for CLS, expressed in W and rounded to the second decimal	-	Colour rendering index, rounded to the nearest integer, or the range of CRI-values that can be set	80
Outer dimensions without separate control gear, lighting control	Height	1	Spectral power distribution in the range 250 nm to 800 nm, at full-load
	Width	6	
	Depth	500	
			See image in last page

parts and non-lighting control parts, if any (millimetre)			
Claim of equivalent power ^(a)	-	If yes, equivalent power (W)	-
		Chromaticity coordinates (x and y)	0,440 0,403
Parameters for LED and OLED light sources:			
R9 colour rendering index value	-5	Survival factor	0,90
the lumen maintenance factor	0,96		

(a) : not applicable;

(b) : not applicable;

Spectral Flux Graph



Model placed on the Union market from 07/10/2024.



EPREL registration number: 2082310

<https://eprel.ec.europa.eu/qr/2082310>

Supplier: BDSK Handels GmbH & Co. KG (Importer)

Website: www.xxxlgroup.com

Customer care service:

Name: Importabteilung

Website:

Email: EPREL-info@xxxlgroup.com

Phone: +4350111500949

Address:

Römerstraße 39

4600 Wels

Austria