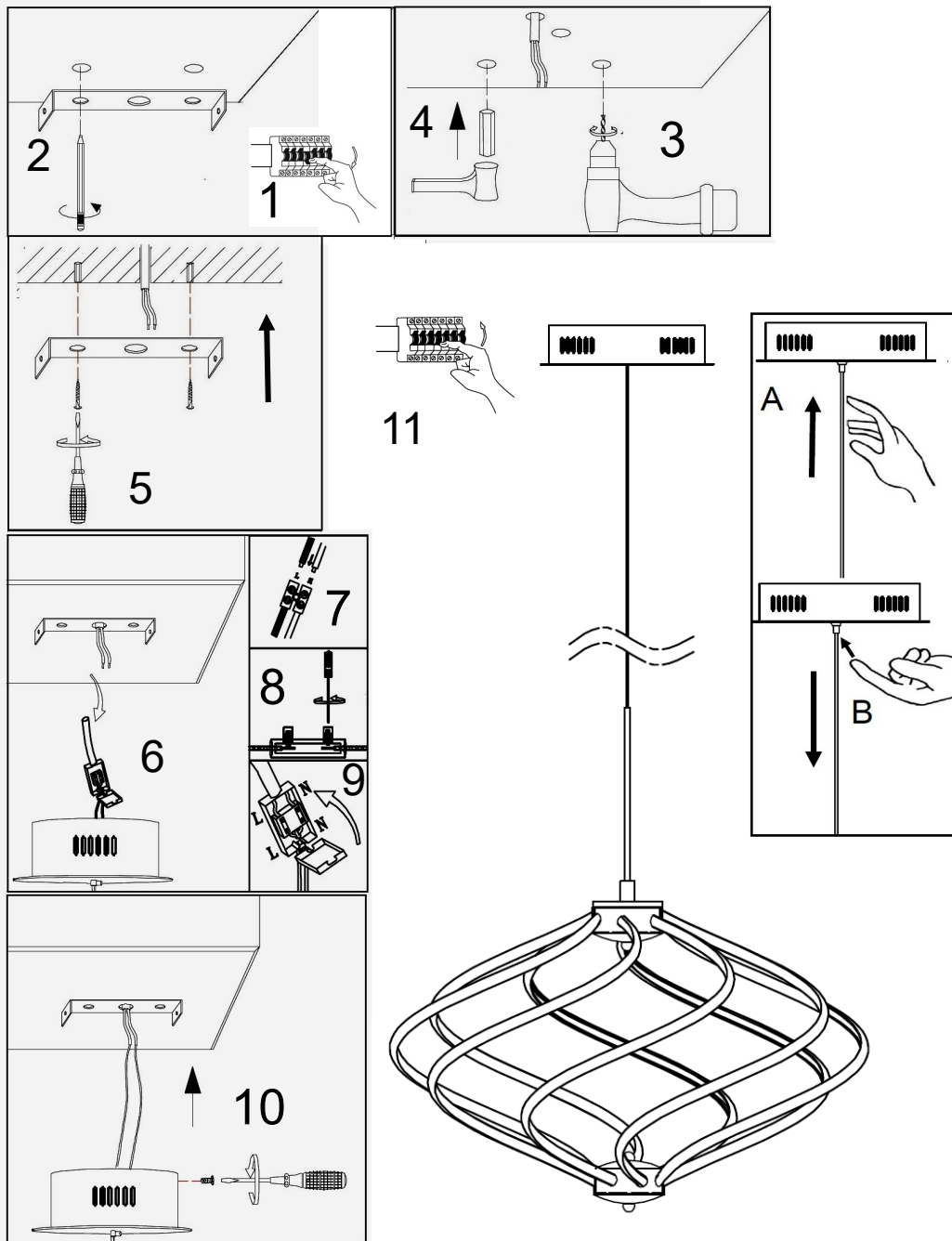


# searchlight

## 6500-7



### SAFETY INFORMATION: (Please retain for future reference)

- Always turn off the mains supply before commencing the installation of this fitting .
- This is a Class 2 product and requires no Earth connection – 230 (240) Volts – 50Hz AC.
- This product must be installed in accordance with the national building regulations, if in doubt consult a competent electrician.
- Do not stare at the operating lamp .
- Do not modify or alter any product before or after installation. This may invalidate your warranty and may render the product un-safe.

### POSITION

- This fitting is suitable for installation in Indoor locations only .
- Do not mount the fitting in a damp atmosphere.
- Ensure sufficient access to the fitting to enable safe maintenance.
- The Luminaire should be positioned so that prolonged staring into the luminaire at a distance closer than 0.2m is not expected

### LED INFORMATION:

- The Fitting is suitable for dimming when using with compatible LED dimmer switch.
- The LED lamps are not replaceable , when the lamps reach the end of their life the whole luminaire shall be replaced .
- The LED lamps and chip board are not removable

### HEIGHT ADJUSTMENT:

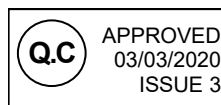
The height of the fitting can be reduced if required. Hold the support wire and push firmly upwards Fig a.) .This will reduce the height of the fitting .To increase the height push in the small pin in the ceiling can (Fig b) , and this will release the locking mechanism and the weight of the fitting should allow the support wires to lengthen . Should the wire fail to re-release fully , gently pull down on the wire whilst keeping the pin depressed



### AFTERCARE AND MAINTENANCE:

- Always disconnect power supply when servicing or cleaning.
- Clean only with a dry or slightly damp cloth.

### MAINS SUPPLY

### LIGHT FITTING



LIVE - Possible colours : Red or Brown  LIVE  
NEUTRAL - Possible colours : Black or Blue  NEUTRAL