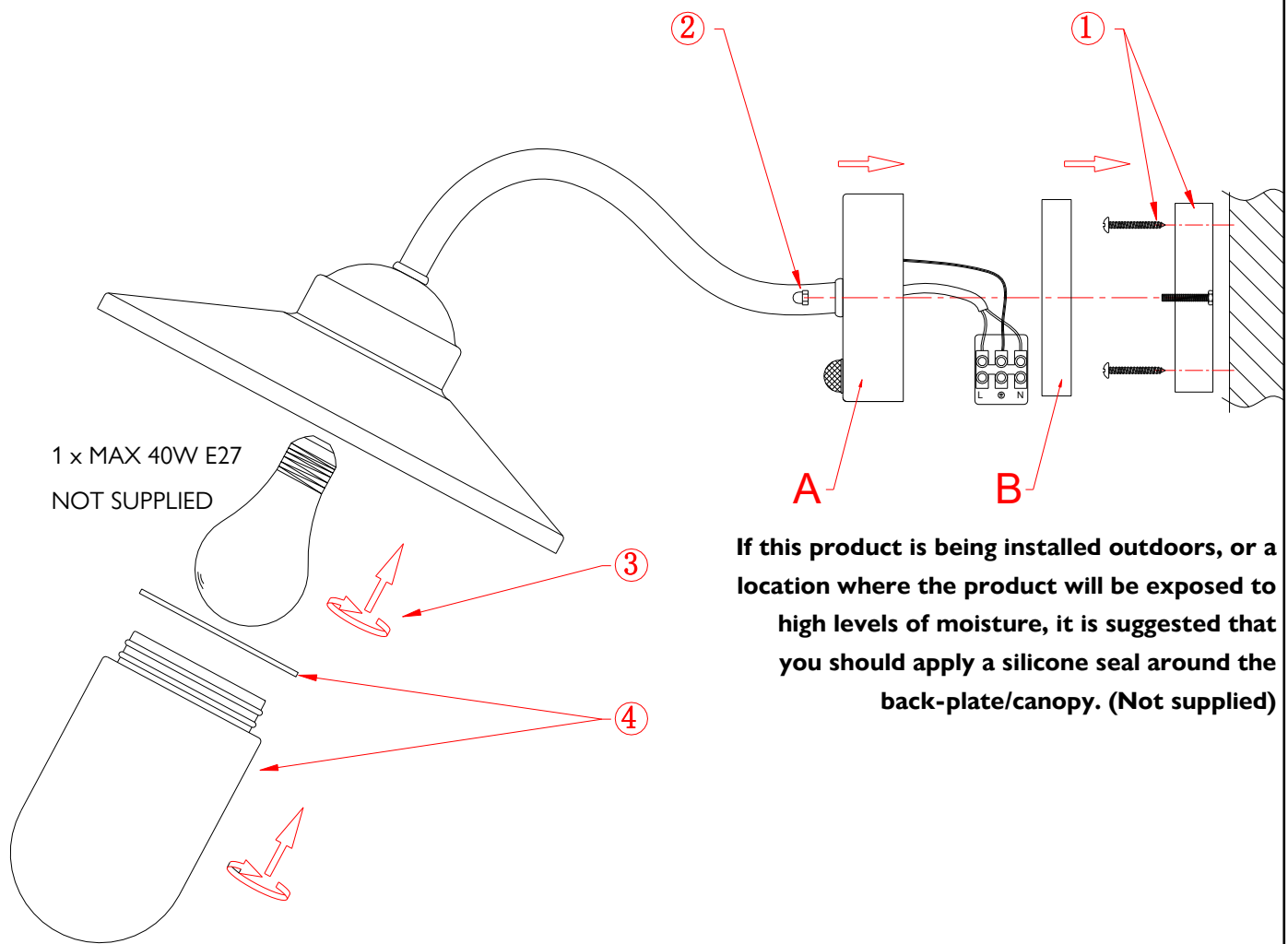
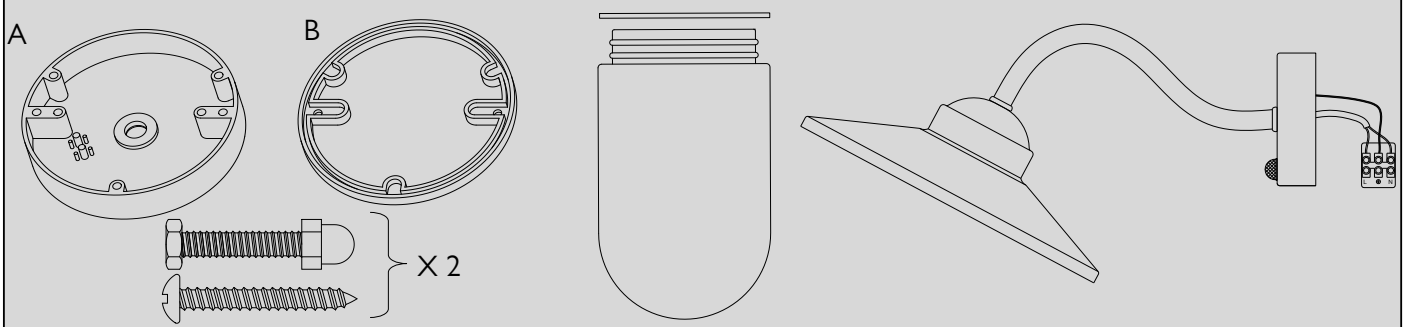


Please install the fixture onto a sufficiently strong, load bearing surface.



If this product is being installed outdoors, or a location where the product will be exposed to high levels of moisture, it is suggested that you should apply a silicone seal around the back-plate/canopy. (Not supplied)

See final page for wiring instructions.




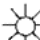


Installation of the motion detector

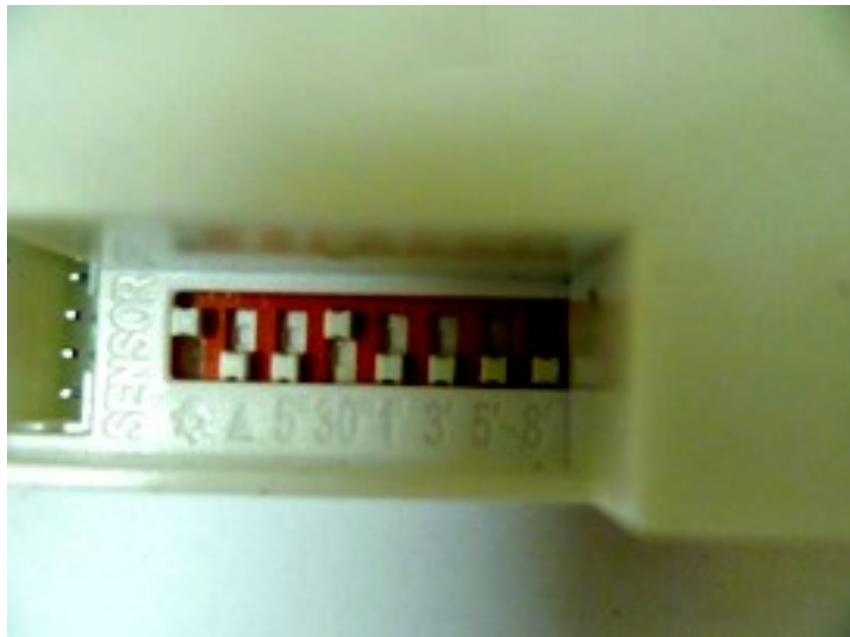
1 - To determine the time, you can choose between 5 seconds, 30 seconds, 1 minute, 3 minutes, 5 minutes and 8 minutes.

Choose the time and press the button in the high position using a small screwdriver (the last 6 buttons)

2 - The symbol  relates to scope. The base of the symbol (down position) represents a range of 5 to 8 meters and the top of the symbol (high position) represents a range of 1 to 3 meters.

3 - The symbol  relates to twilight detection. When the button is in the up position, it lights up only when it is dark. When the button is in the down position it also lights up when there is more light.

Please note that setting up will be more efficient if it is dark.



Before starting the electrical work or connecting your light you will need to switch off your power supply at the fuse box (consumer unit). Either the miniature circuit breaker (MCB) can be turned off for the circuit for your light (it is suggested to apply RED insulating tape over the MCB to prevent it from being accidentally turned on). Or the main switch can be turned off, the circuit fuse removed, and the main switch turned on again to restore power to the rest of the house.

GREEN/YELLOW

Earth



BROWN

Live



BLUE

Neutral



BLUE with brown sleeving


Switch wire with sleeving

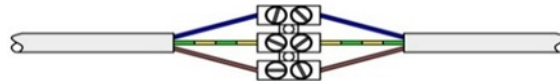
Live wires can also sometimes be signified by a RED wire




Neutral wires can also sometimes be signified by a white or black wire



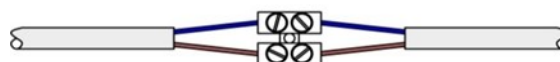
CLASS I Luminaires (Earthed) - Connect the brown wire from the luminaire to the supply live wire (red or brown). Connect the blue wire to the supply neutral wire (black or blue). Connect the green/yellow wire to the supply earth wire (green/yellow) or connect the supply earth to the luminaire earth terminal marked: 



CLASS II Luminaires (Not earthed) - These luminaires are double insulated and have the symbol: 

These fittings do not have to be connected to the supply earth. Make sure that the basic insulation of the supply wiring cannot contact touchable metal. Connect the brown wire from the luminaire to the supply live wire (red or brown). Connect the blue wire to the supply neutral wire (black or blue). Isolate the supply earth wire.

If silicone sleeving is provided, fit over the supply cable up to the terminal block or lamp holder, to at least the mounting surface, to protect cable from heat.


Recycling

You have a duty to dispose of electrical waste properly. Check with your Local Authority or Retailer for recycling advice.

Help line +44 1420 82377

IT IS RECOMMENDED THAT LIGHTS ARE INSTALLED BY A QUALIFIED ELECTRICIAN

DR-0732