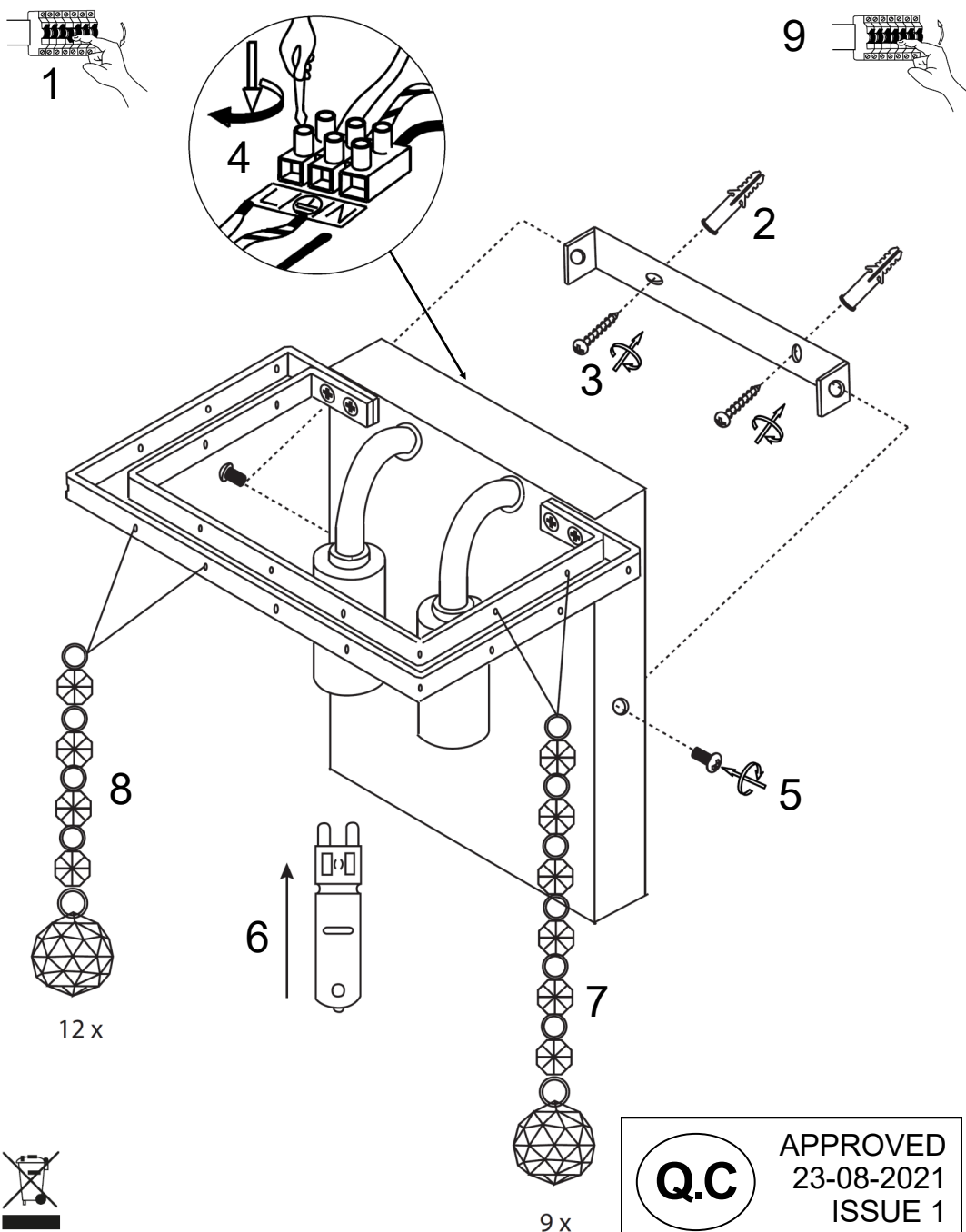


searchlight

5402-2



Q.C APPROVED
23-08-2021
ISSUE 1

SAFETY INFORMATION: (Please retain for future reference)

- This product must be installed in accordance with the national building regulations, if in doubt consult a competent electrician.
- Always turn off the mains supply before commencing the installation of this fitting .
- This is a Class I product and requires an Earth connection – 230 (240) V – 50Hz AC.
- The Product should not be modified , as this may void the product warranty and render the product unsafe.
- Before inserting and replacing a lamp make sure that the power is switched off and the bulb has cooled down. Do not exceed the maximum stated wattage.
- Never leave packaging components within reach of children as they can be a source of danger.

POSITION:

- The fitting is suitable for installation in indoor locations only.
- The fitting is suitable for fixing onto a flat , solid surface.
- Ensure sufficient access to the fitting to enable safe maintenance.
- The Luminaire should be positioned so that prolonged staring into the luminaire at a distance closer than 0.2m is not expected

LAMP INFORMATION:

- We recommend LED lamps only.
- The fitting can be dimmed when using an dimmable LED lamp .
- Do not exceed the maximum wattage and bulb type stated on the lamp holder.

AFTERCARE AND MAINTENANCE:

- Always disconnect power supply when servicing or cleaning.
- Clean only with a dry or slightly damp cloth
- Do not use abrasive cloths or cleaners as this may damage the product.

MAINS SUPPLY

