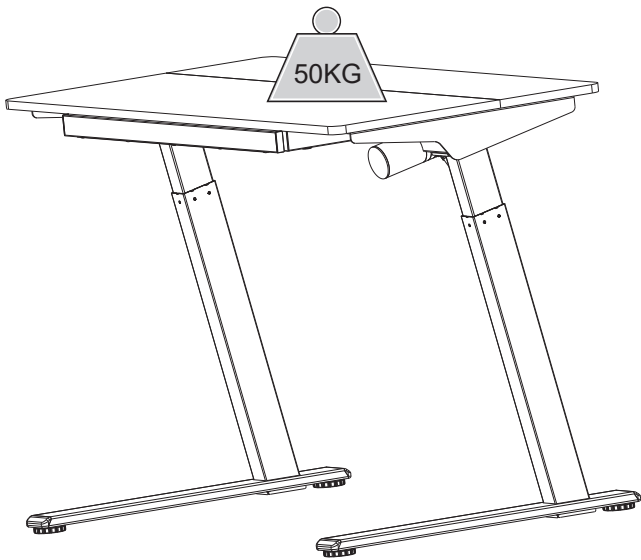


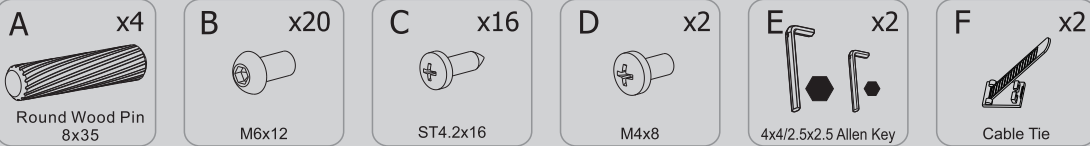
13180007/01



Technical data

| | |
|---------------------|--|
| Product Model | 13180007/01 |
| Column Stage | 2 |
| Max. Load Capacity | 50KG |
| Average Speed | 25mm/s |
| Highest Position | 1220mm |
| Lowest Position | 730mm |
| Drawer Dimensions | 667.5mmx270mmx43mm |
| Tabletop Dimensions | 1200mmx600mmx16mm |
| Duty Cycle | 10%(Work continuously for 2 minutes, pause for 18 minutes) |
| Temperature | 0~40℃ |

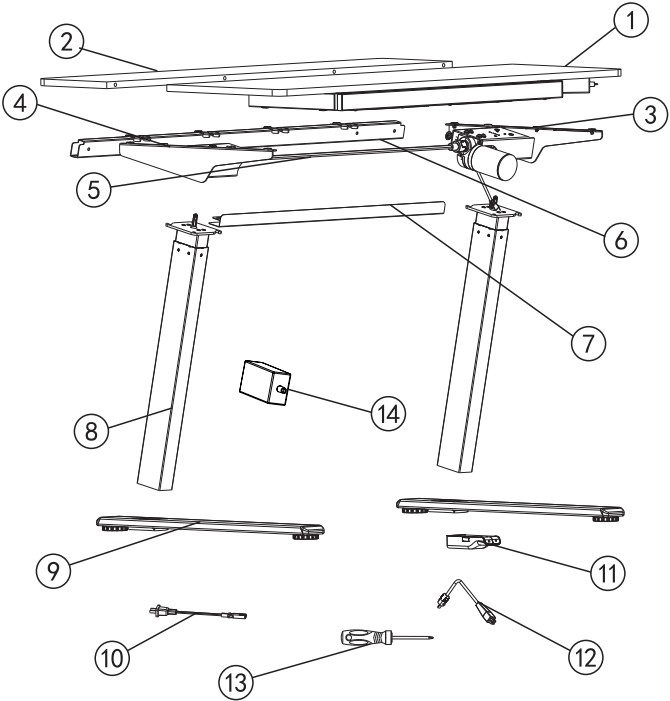
Accessory list



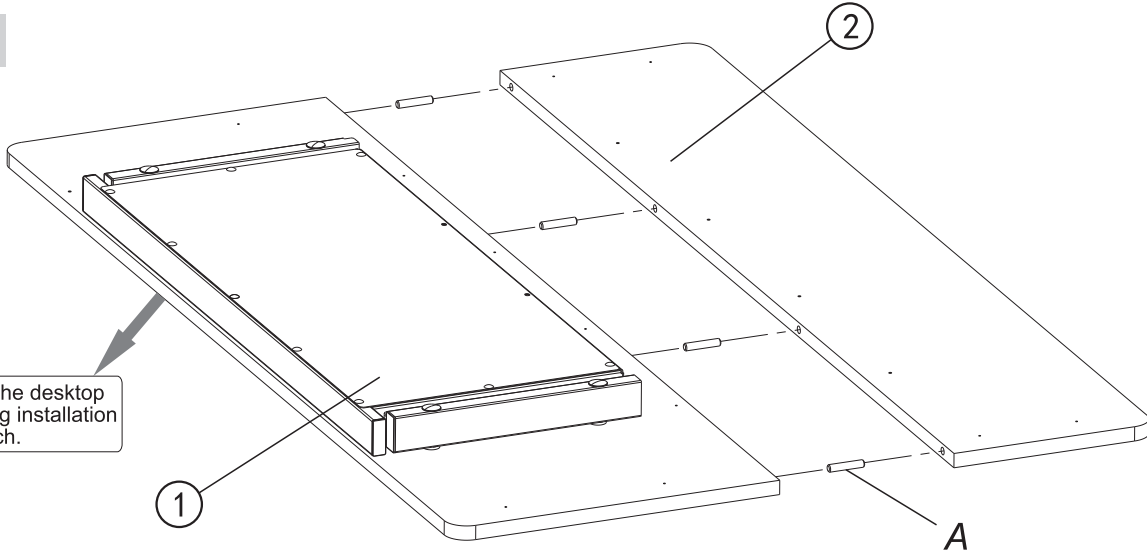
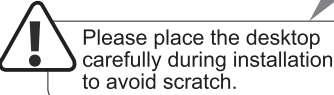
Component List

| No. | Part | Qty | No. | Part | Qty |
|-----|------|-----|-----|------|-----|
| ① | | 1 | ② | | 1 |
| ③ | | 1 | ④ | | 1 |
| ⑤ | | 1 | ⑥ | | 1 |
| ⑦ | | 1 | ⑧ | | 2 |
| ⑨ | | 2 | ⑩ | | 1 |
| ⑪ | | 1 | ⑫ | | 1 |
| ⑬ | | 1 | ⑭ | | 1 |

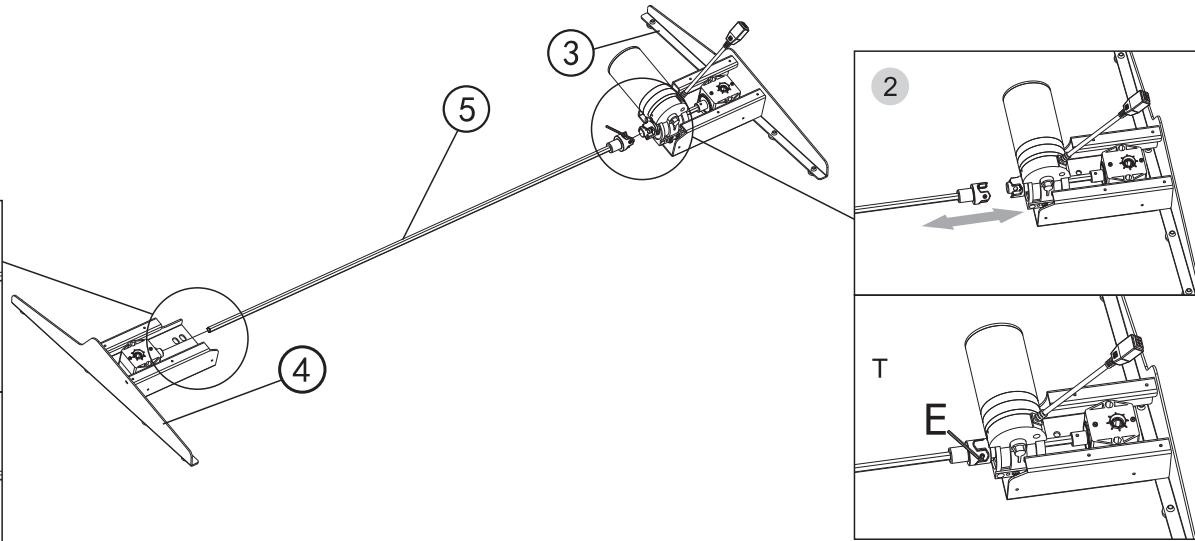
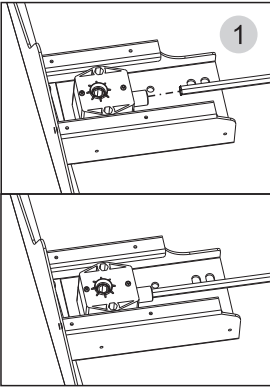
Installation Diagram



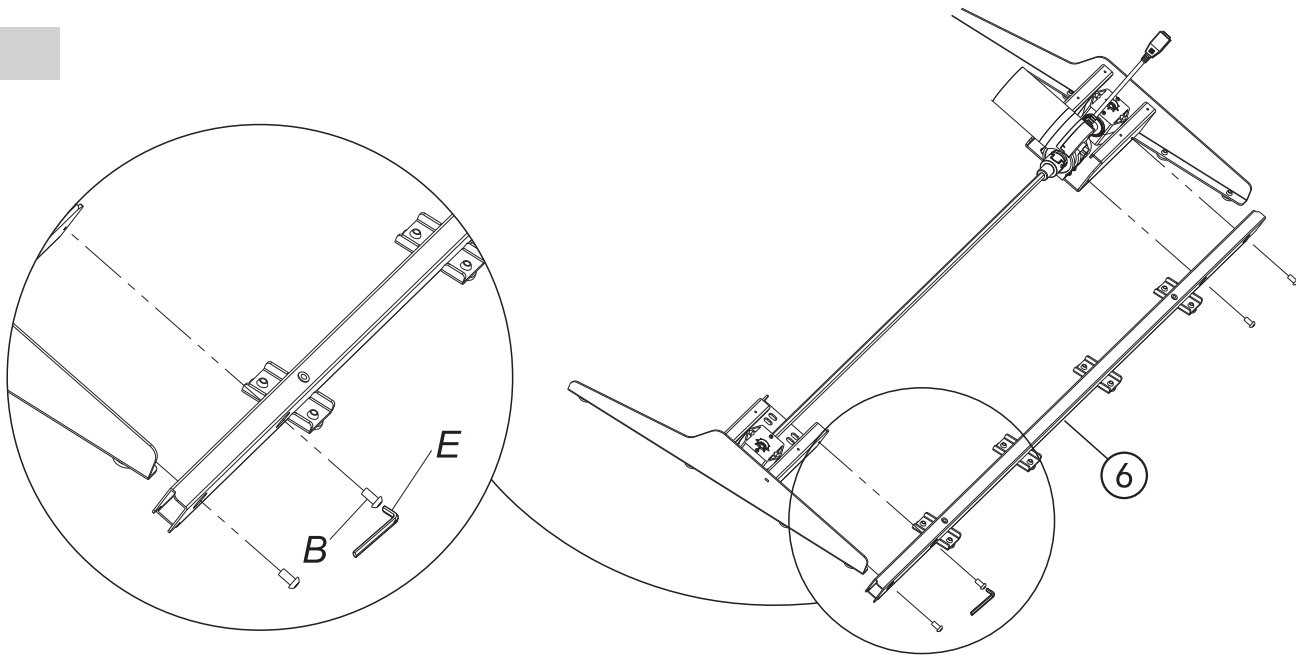
STEP1



STEP2

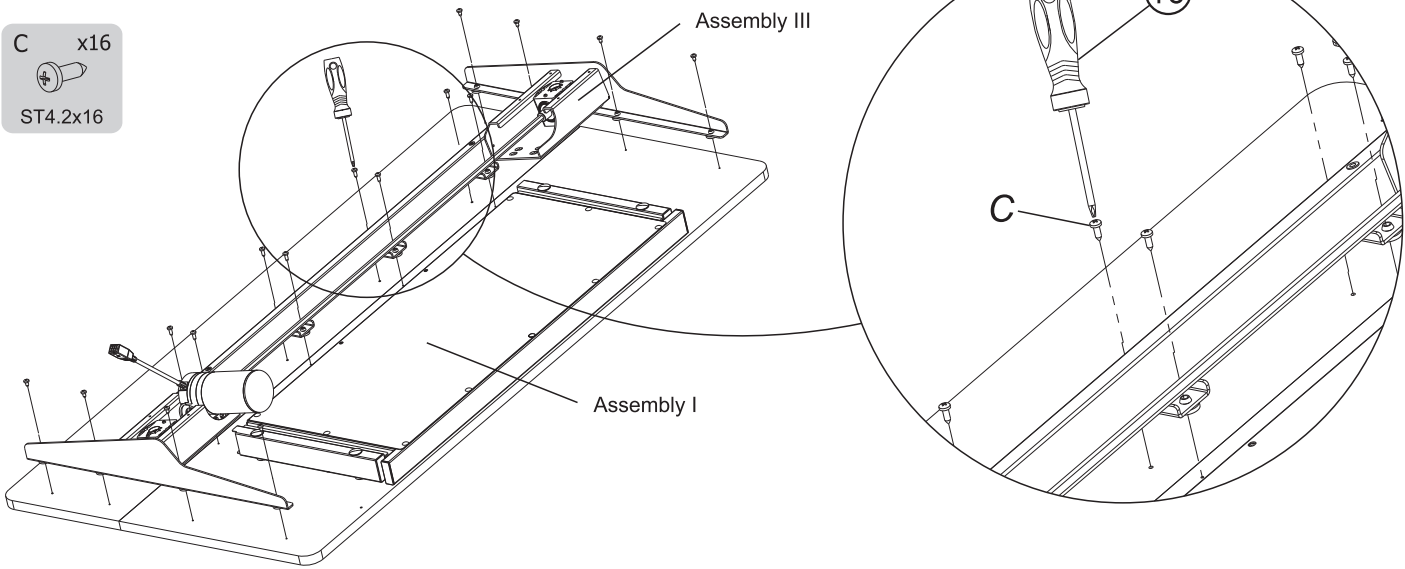


STEP3



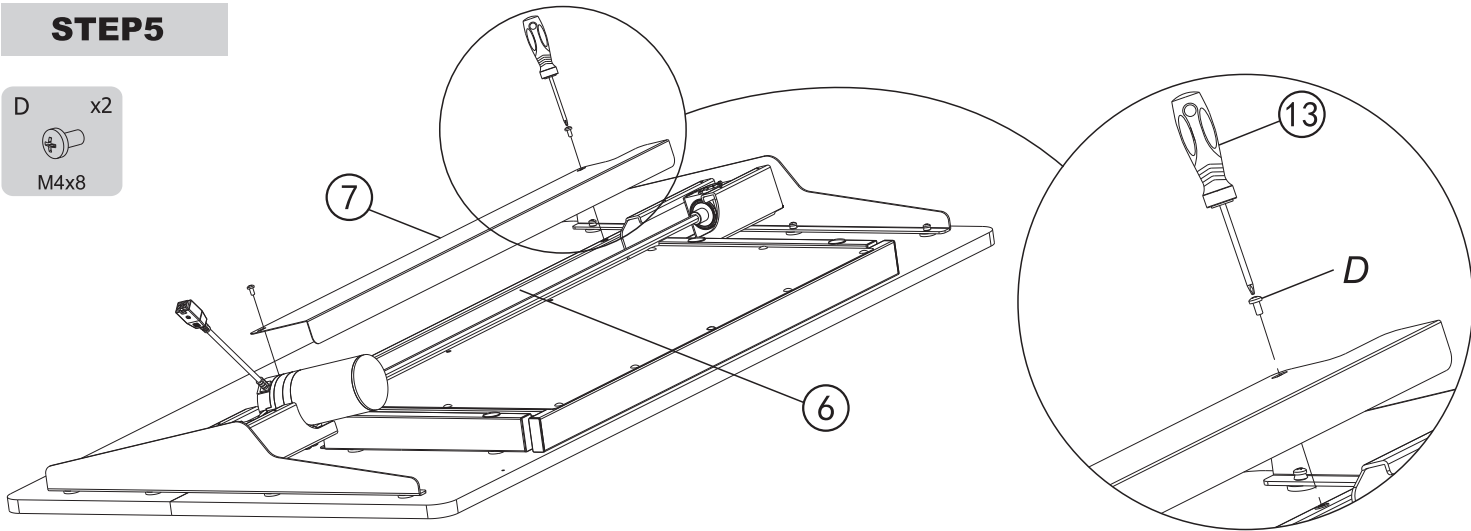
STEP4

C x16
ST4.2x16



STEP5

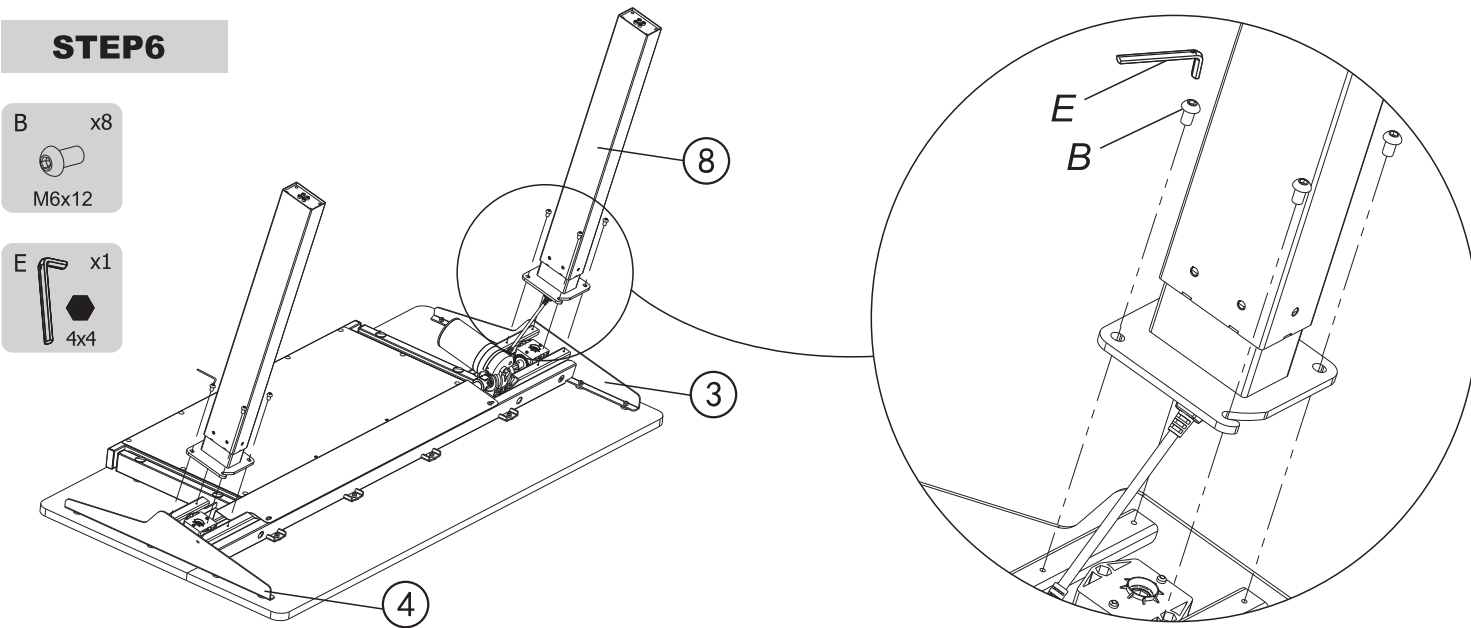
D x2
M4x8



STEP6

B x8
M6x12

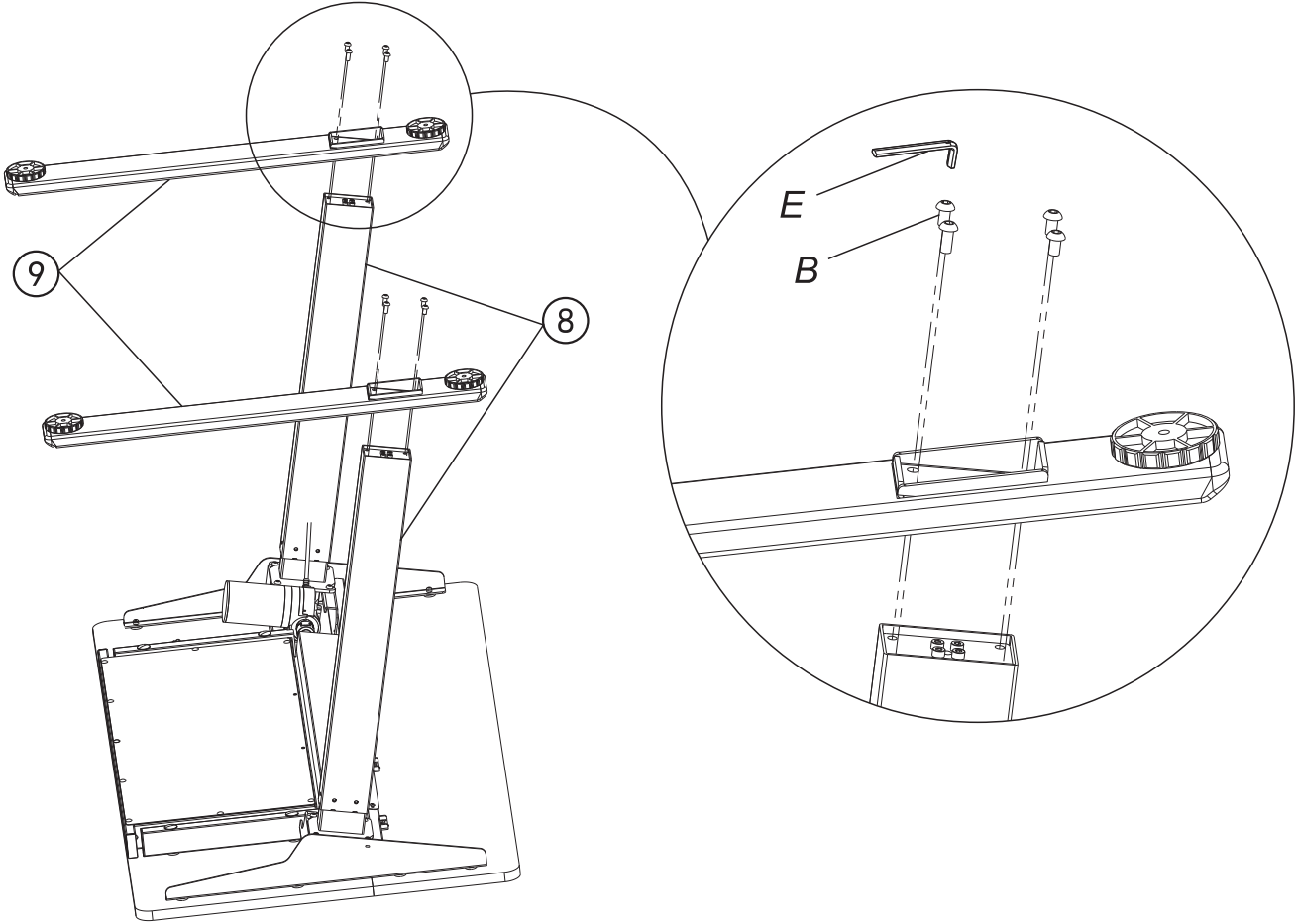
E x1
4x4



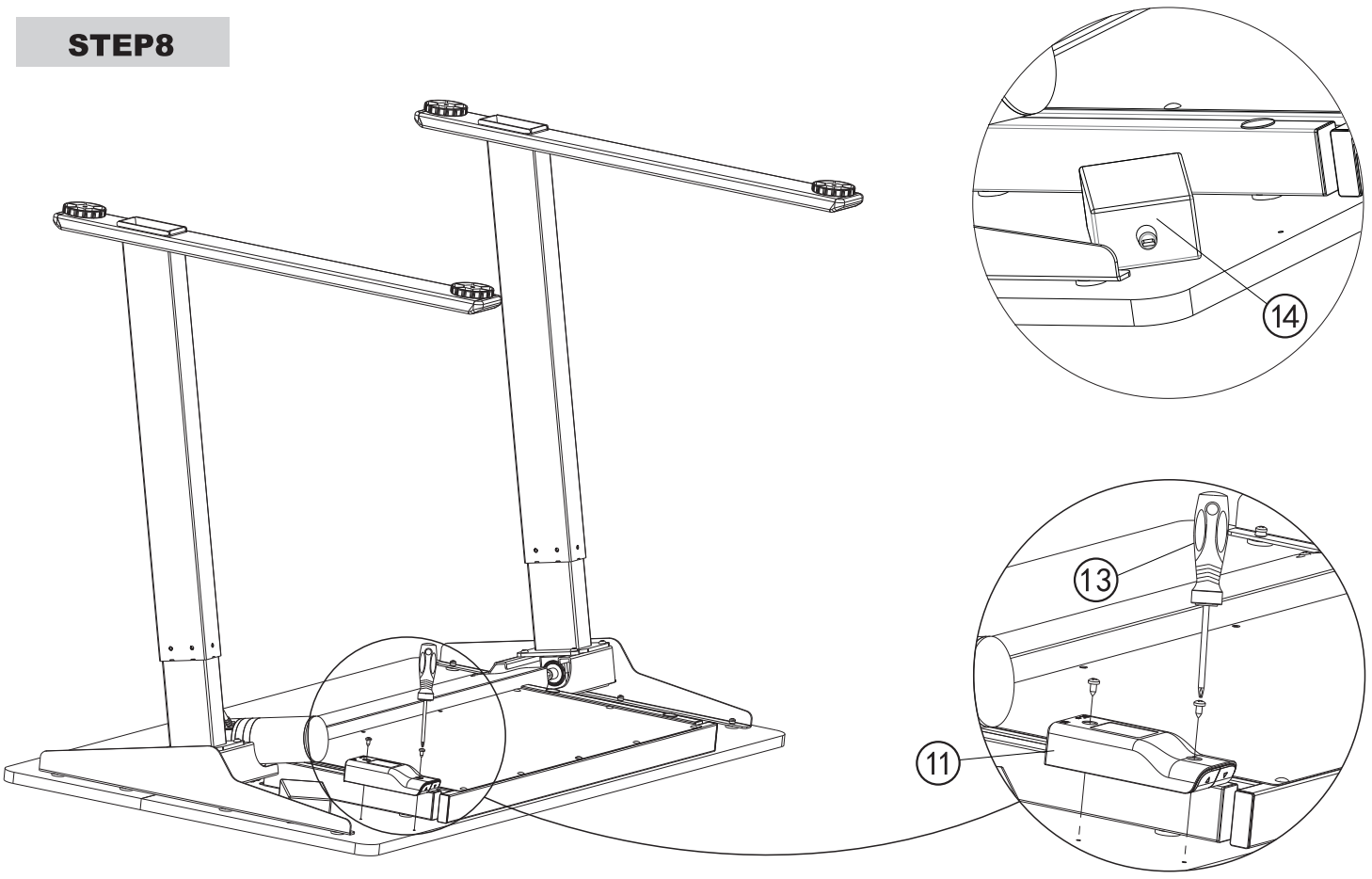
STEP7

B x8
M6x12

E x1
4x4

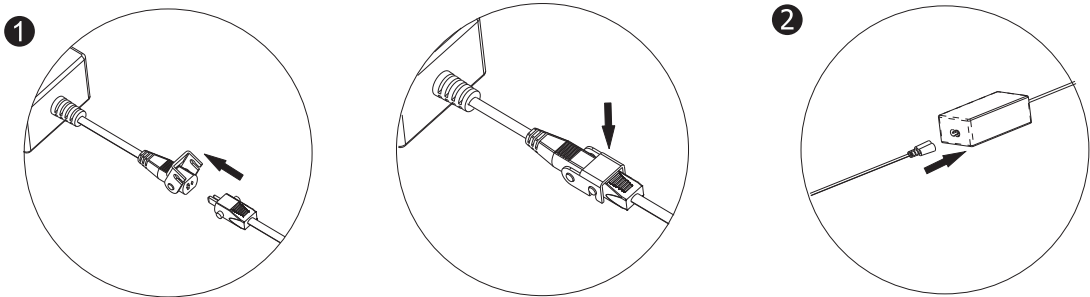
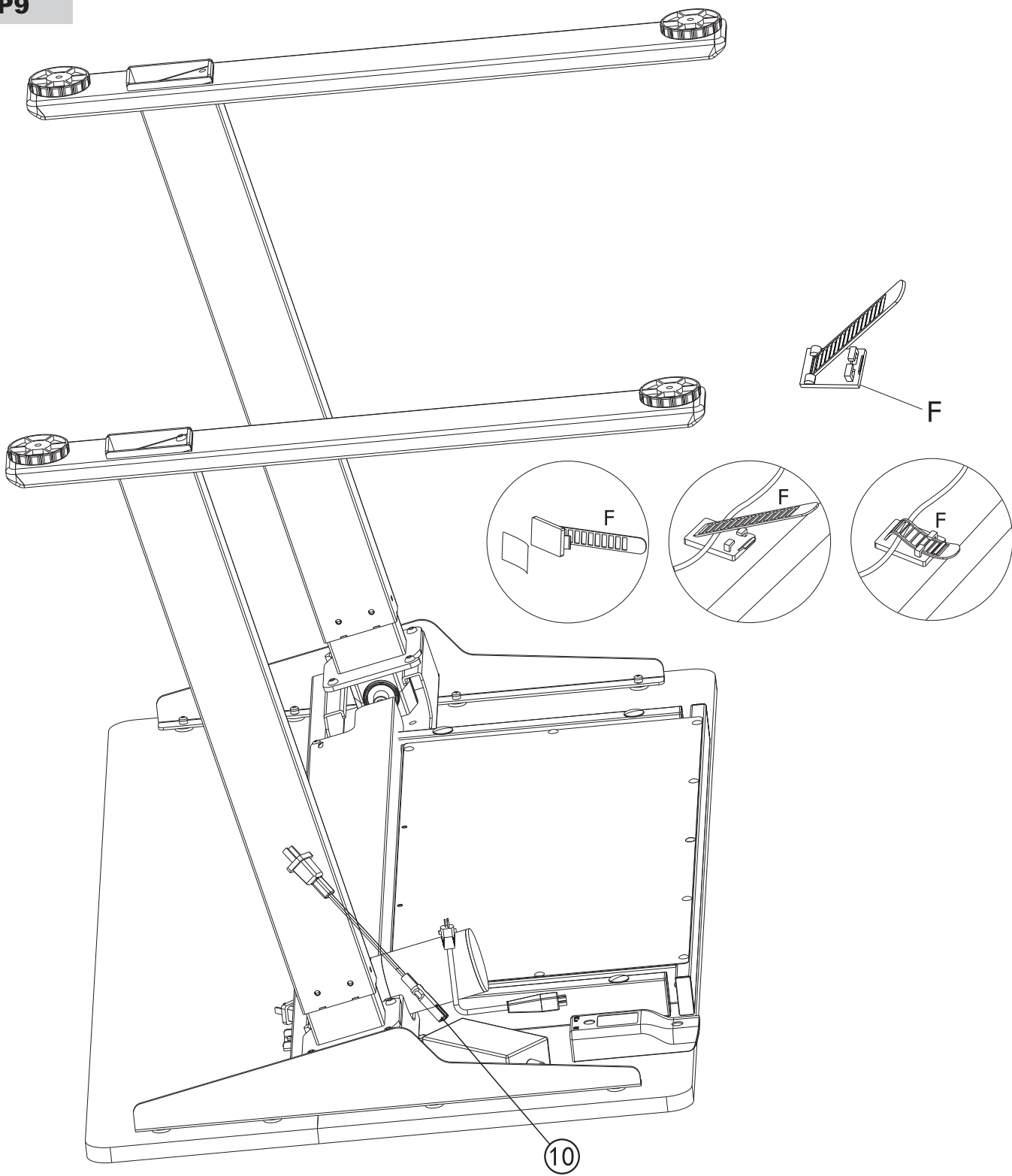


STEP8



STEP9

F x2
Cable Tie



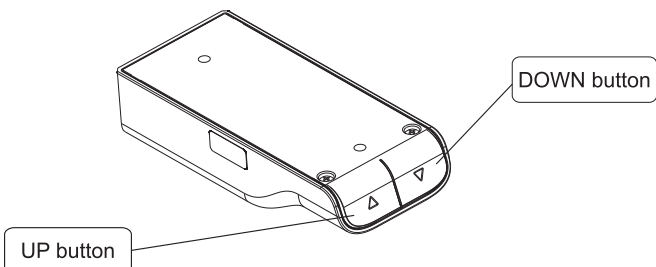
How to use handset

- | | | |
|---|-----|---------------------------|
| ● | “▲” | Adjust the desk upwards |
| ● | “▼” | Adjust the desk downwards |

Operation

- Button Lift Function
Press the “▲” or “▼” button to adjust the height of the desk.
- Reset Function
(1) When at the lowest position, long press the “▼” button for more than 5 seconds to enter the reset mode. The reset will be finished until the lift system rebound and stop after reaching the bottom.
(2) When the lifting system fails, release the button, long press the “▼” button, the reset will be finished until the lift system rebound and stop after reaching the bottom.

Button



Waste disposal



This marking indicates that this product should not be disposed with other household wastes. To prevent possible harm to the environment or human health from uncontrolled waste disposal, recycle it responsibly to promote the sustainable reuse of material resources. To return your used device, please use the return and collection systems or contact the retailer where the product was purchased. They can take this product for environmental safe recycling.

BDSK Handels GmbH & Co KG
Mergentheimer Straße 59
97084 Würzburg, Germany.