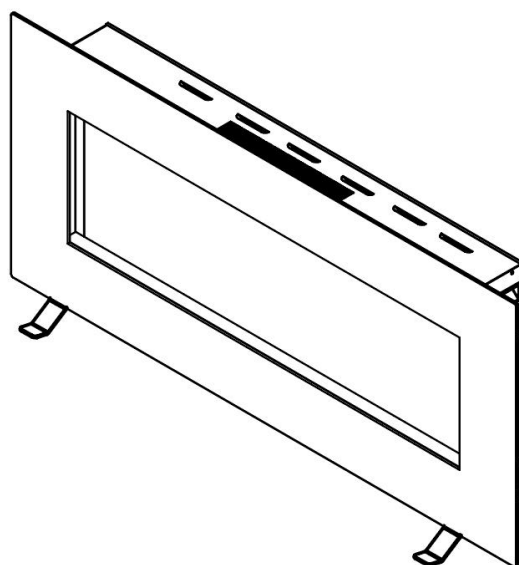
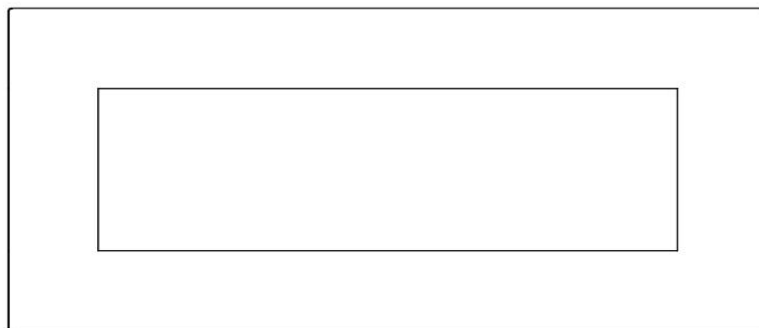


42" Wall Mounted & Freestanding Electric Fireplace

Model# : BEF-42WM



16970011/01
VEGAS

AC 220-240V 50Hz 1400-1600W

WARNING

Read and understand this entire owner's manual, including **all safety information**, before **plugging in** or **using** this product. Failure to do so could result in **fire, electric shock, or serious personal injury**.



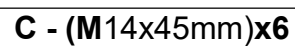
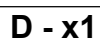
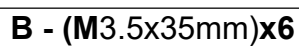
IMPORTANT SAFETY INFORMATION!

WARNING

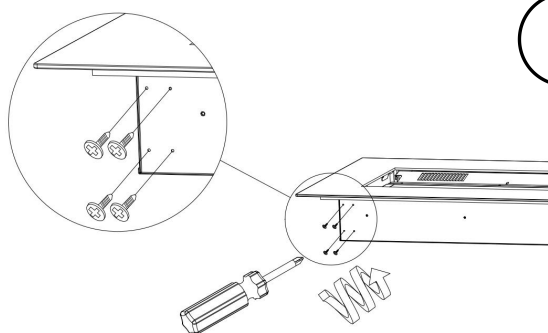
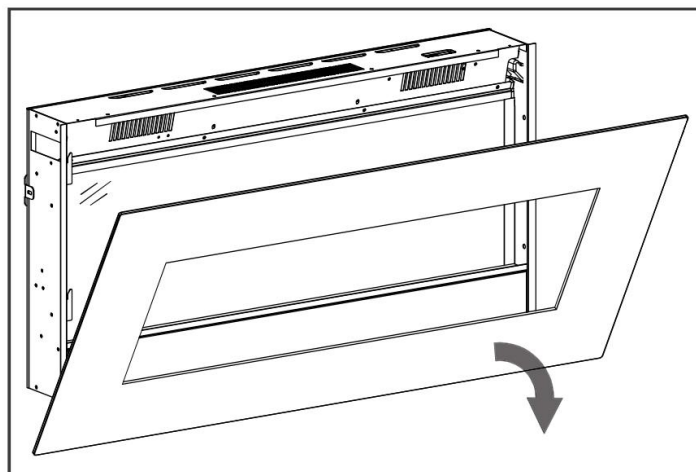
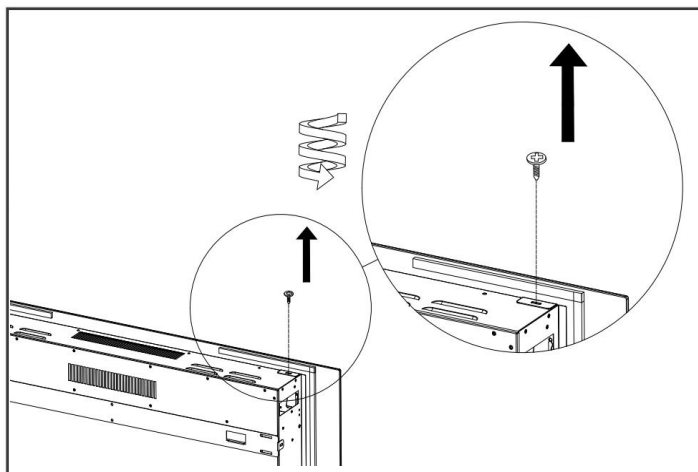
When using electrical appliances basic precautions should always be followed to reduce the risk of fire, electric shock and injury to persons, including the following:

- Read all instructions before using this heater.
- This heater is hot when in use. To avoid burning, do not touch hot surface. If provided, use handles when moving this heater. Keep combustible materials, such as furniture, pillows, bedding, papers, clothes, and curtains at least 1 m from the front of the heater and keep them away from the sides and rear. In order to avoid overheating, do not cover the heater.
- Extreme caution is necessary when any heater is used near children or the infirm and whenever the heater is left operating and unattended.
- Always unplug heater when not in use.
- Do not operate any heater with a damaged cord or plug or after the heater malfunctions, has been dropped damaged in any manner, return heater to authorized service facility for examination, electrical or mechanical adjustment, or repair.
- Indoor use only, do not use outdoors.
- This heater is not intended for use in bathrooms, laundry areas and similar indoor locations. Never locate heater where it may fall into a bathtub or other water container.
- Do not run cord under carpeting. Do not cover cord with throw rugs, runners, or similar coverings. Arrange cord away from traffic area and where it will not be tipped over.
- To disconnect heater, turn controls to off, then remove plug from outlet.
- Do not insert or allow foreign objects to enter any ventilation or exhaust opening as this may cause an electric shock or fire, or damage the heater.
- To prevent a possible fire, do not block air intakes or exhaust in any manner. Do not use on soft surfaces, like a bed, where openings may become blocked.
- A heater has hot and arcing or sparking parts inside. Do not use it in areas where gasoline, or flammable liquids are used or stored.
- Use this heater only as describes in this manual. Any other use not recommended by the manufacturer may cause fire, electric shock, or injury to persons.
- DANGER-HIGH Temperatures may be generated under certain abnormal conditions. Do not partially or fully cover or obstruct the front of this heater.
- Replacement of the lamps should be done only while the heater is disconnected from the supply circuit.
- This appliance is not intended for use by persons (including children) with reduced physical, sensory or capabilities, or lack of experience and knowledge, unless they have been given supervision or instruction concerning use of the appliance by a person responsible for their safety. Children should be supervised to ensure that they do not play with the appliance.
- CAUTION: In order to avoid a hazard due to inadvertent resetting of the thermal cut-out, this appliance must not be supplied through an external switching device, such as a timer, or connected to a circuit that is regularly switched on and off by the utility.

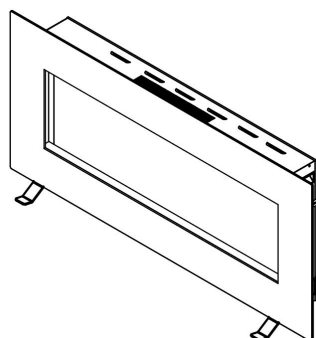
Parts and Hardware



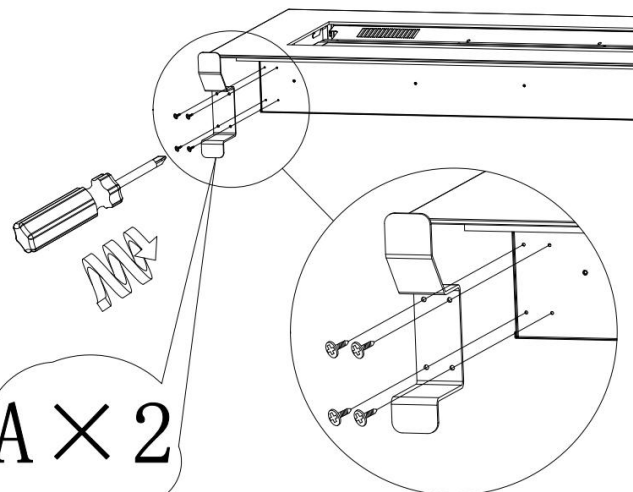
Front Glass Removal / Metal Feet Installation



1

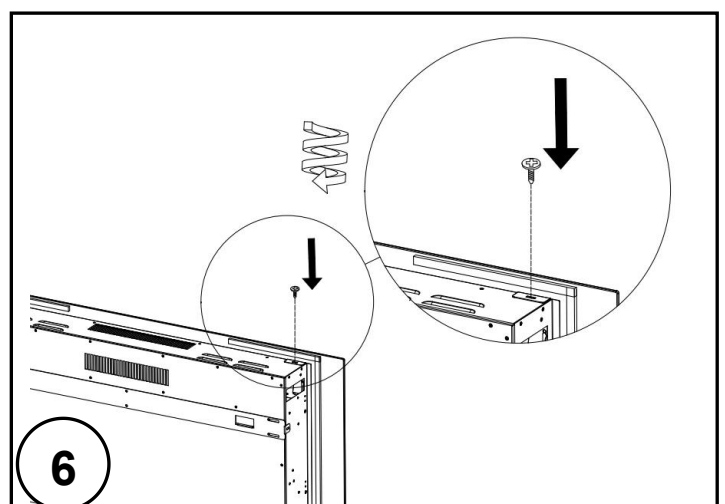
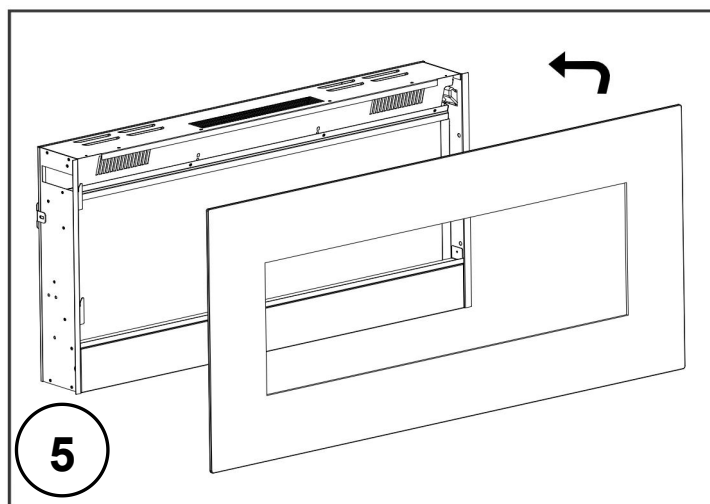
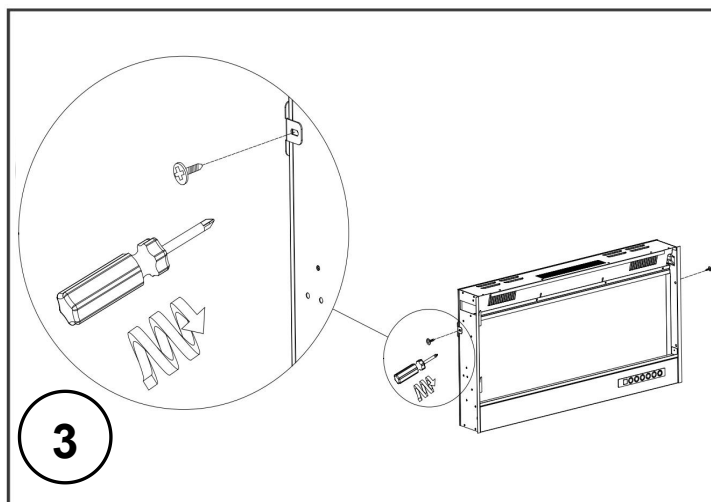
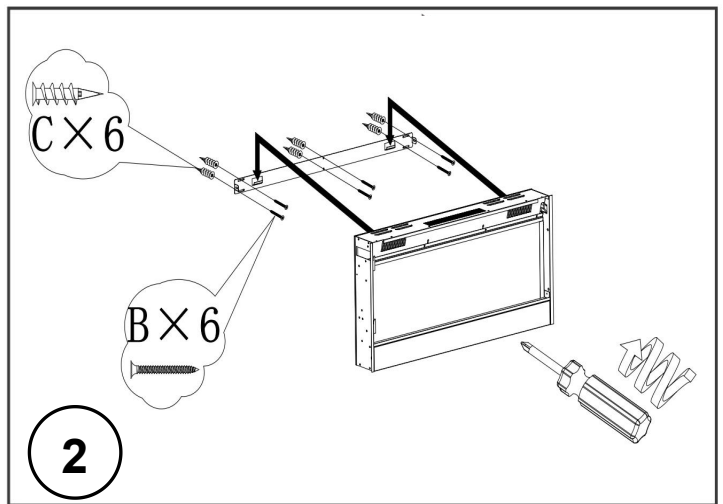
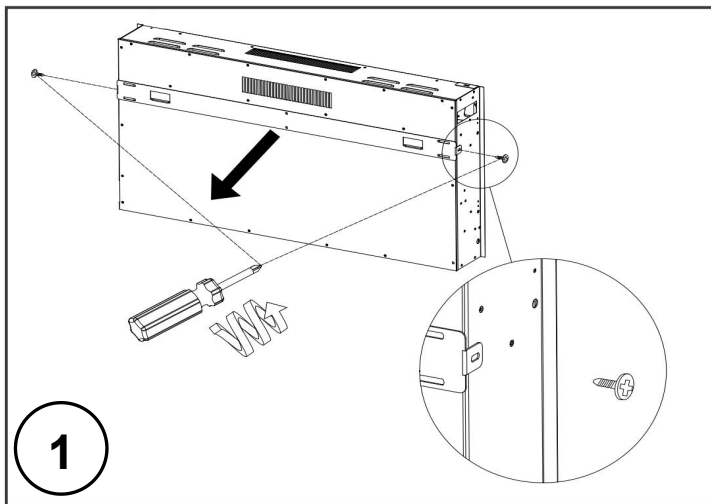


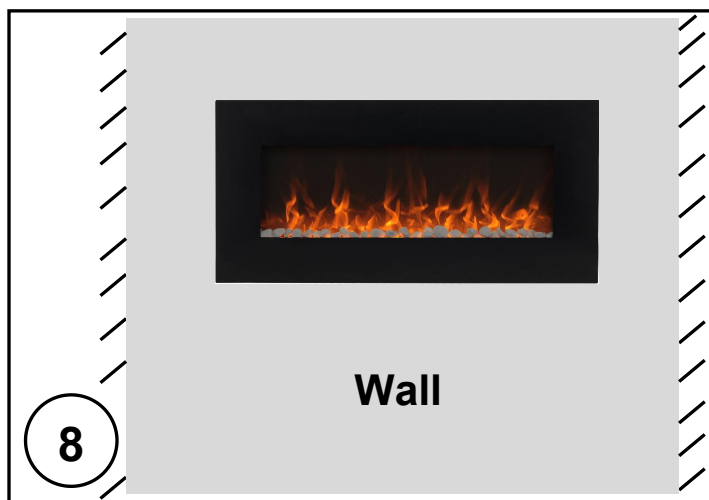
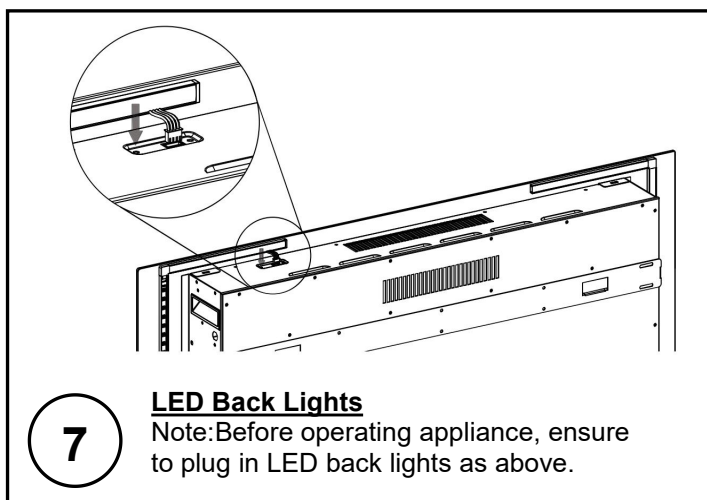
3


$$(A \times 2)$$

2

Installation and Assembly

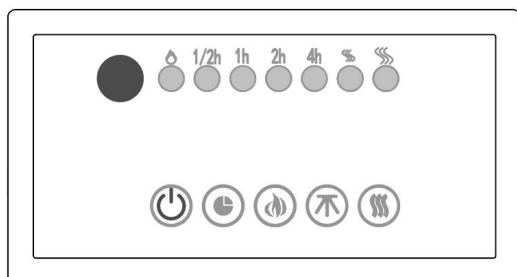




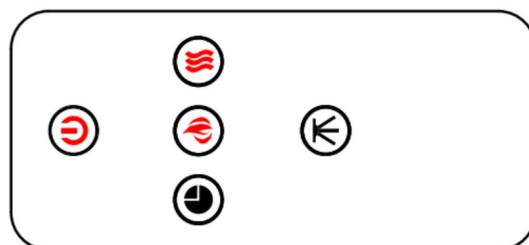
Operation



Read and understand this entire owner's manual, including **all safety information**, before **plugging in** or **using** this product. Failure to do so could result in **electric shock, fire, serious injury, or death.**








Control Panel



Remote Control

Control Panel & Remote Control Operation

BUTTON	ACTION & INDICATION
 POWER	Turns the electric fireplace on / off.
 TIMER	Controls the timer. The timer can be programmed to run the electric fireplace for specific lengths of time (30 mins. minimum to 7.5 hrs. maximum).

 FLAME	Controls the height and brightness of the flame.
 HEATER	Turns the heater and blower on / off. 2 Settings: Low Heat and High Heat. Note: The heater will blow cool air for 10 seconds after it turns off. This prevents the appliance from overheating.
 Back Lights	Controls LED back lights. 10 Settings: Orange, red, blue, yellow, green, purple, azure, carmine, white, pink. NOTE: The appliance will auto-cycle through colours after pressing the button 11 times. It will be locked after pressing the button 12 times, and the back lights will be turned off after pressing the button 13 times.



Means “ DO NOT COVER ”.

Remote Control Battery Information

- Remote control uses ONE **CR2025** battery (**Included**)



NEVER dispose of batteries in **fire**. Failure to observe this precaution **may result in an explosion**. Dispose of batteries at your local hazardous material processing center.

Care and Maintenance

Cleaning



ALWAYS turn the heater **OFF** and **unplug the power cord from the outlet** before cleaning, performing maintenance, or moving this fireplace. Failure to do so could result in **electric shock, fire, or personal injury**.



NEVER immerse in **water** or **spray with water**. Doing so could result in **electric shock, fire, or personal injury**.

- All brass parts are lacquered and can be cleaned by simply using a soft cloth. Do not use abrasive material.
- Clean the air vents with a vacuum cleaner.
- Do not immerse the power cord or the plug in water or any liquids.

Maintenance



Risk of electric shock! DO NOT OPEN any panels ! No user-serviceable parts inside!



WARNING! NO SERVICING of the internal or electrical parts should be performed by the consumer. Do not service the unit yourself.

TECHNICAL DATA:

Operating voltage: AC 220-240V, 50Hz

Power consumption: 1400-1600W



You can help protect the environment!

Please remember to respect the local regulations: hand in the non-working

electrical equipment to an appropriate waste disposal centre.