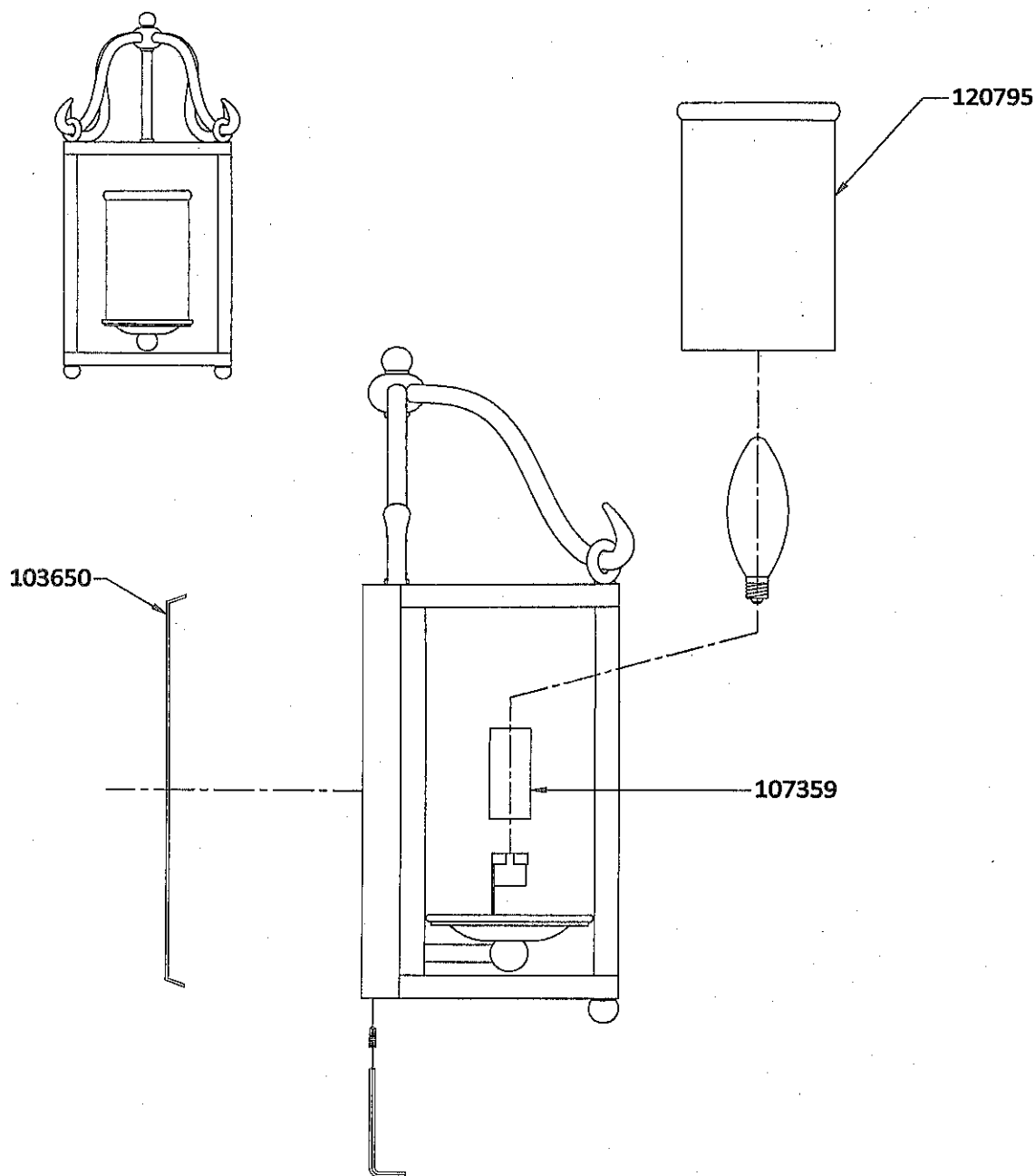


Replacement Parts

WB1744AF



Qty.	Part #	Description
	103650	MOUNTING PLATE WB1744
	120795	GLASS
	107359	SOCKET SPACER TUBE (Ø7/8"×2")

10/22/2014 Rev:1

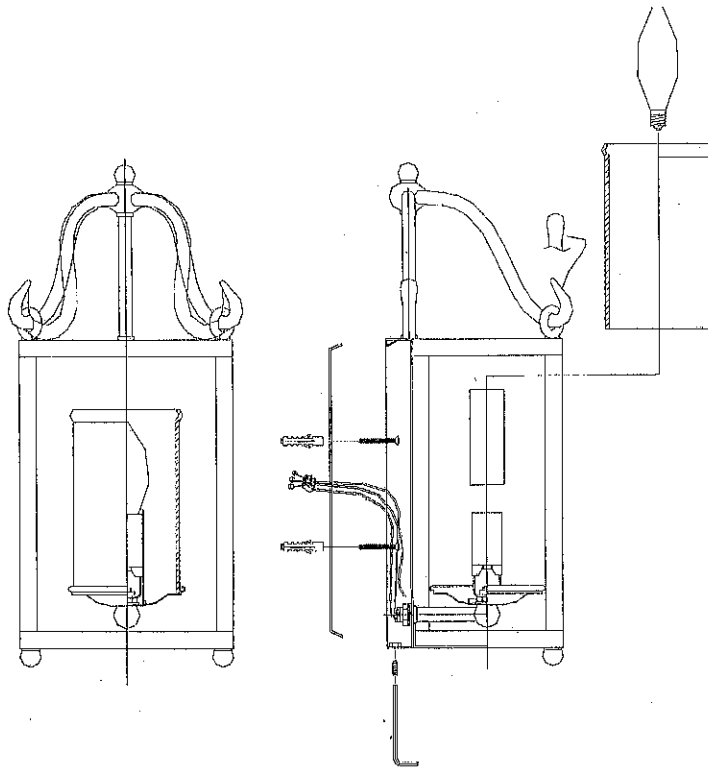
FEISS®

EST. 1955
www.feiss.com

FEISS®

EST. 1955

1A



- 1 Secure the mounting plate to the wall with the two mounting plate screws.
- 2 Follow enclosed supplement installation instructions for electrical and fixture installation onto house wall.
- 3 Mount the fixture base onto the mounting plate and secure it with the fixture screw using an Allen wrench.
- 4 Install the candle tube over the socket.
- 5 Screw the lamps into the sockets. Refer to the label on the lamp socket for Max Wattage information
- 6 Install the shades.