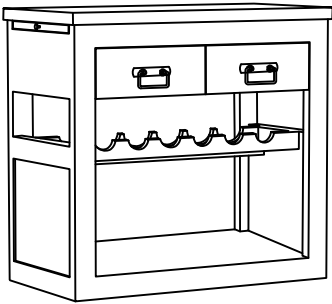


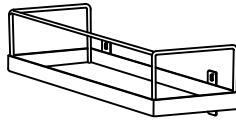
ASSEMBLY INSTRUCTION

69811

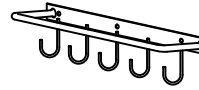
(A) TROLLEY UNIT x 1



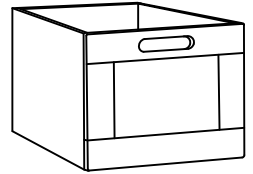
(B) TRAY x 1



(C) HOOKRAIL x 1

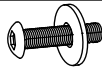


(D) BOX x 2



HARDWARE LIST:

(E) Allen-Bolt x 7
Flat Washer x 7



(F) Castor Wheel x 4



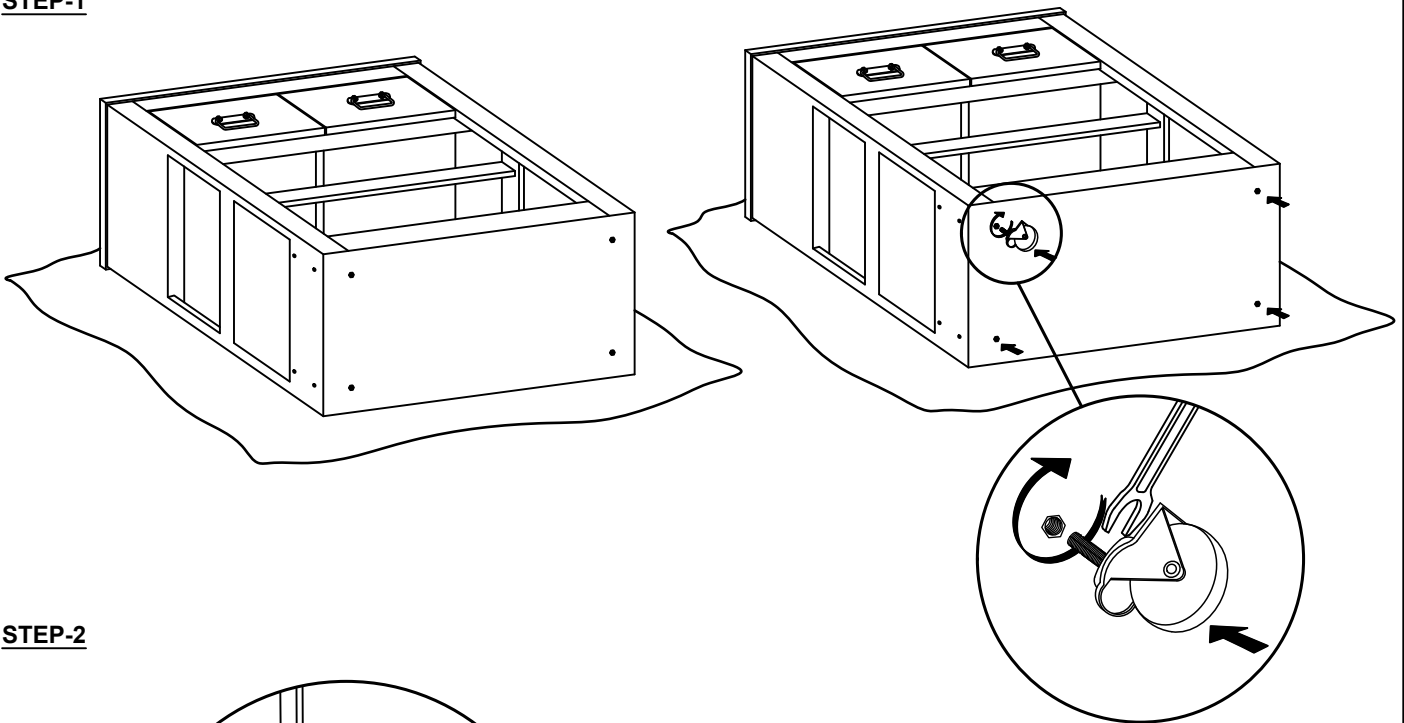
(G) Allen-Key x 1



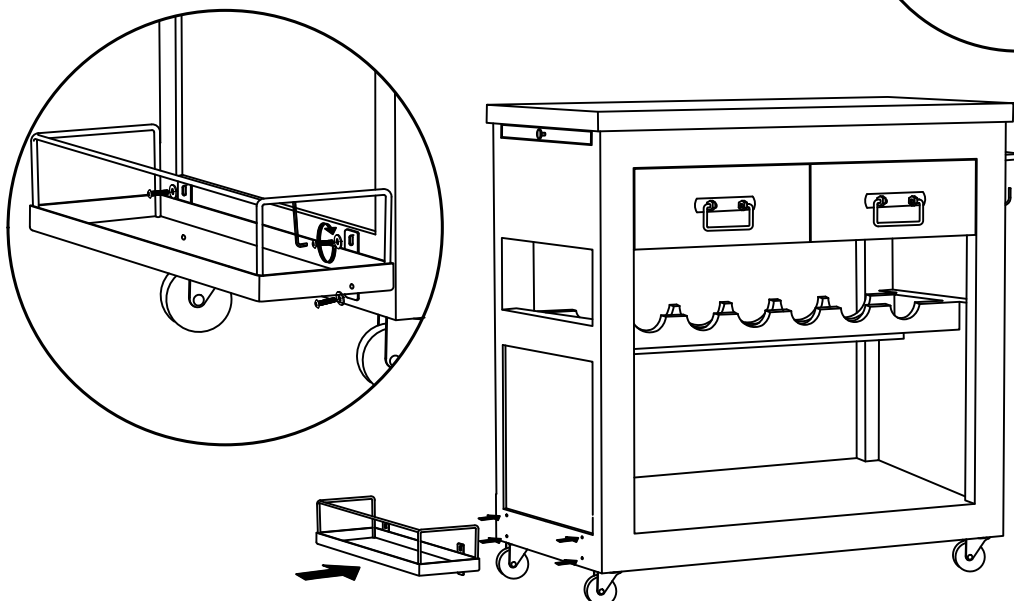
(H) Spanner x 1



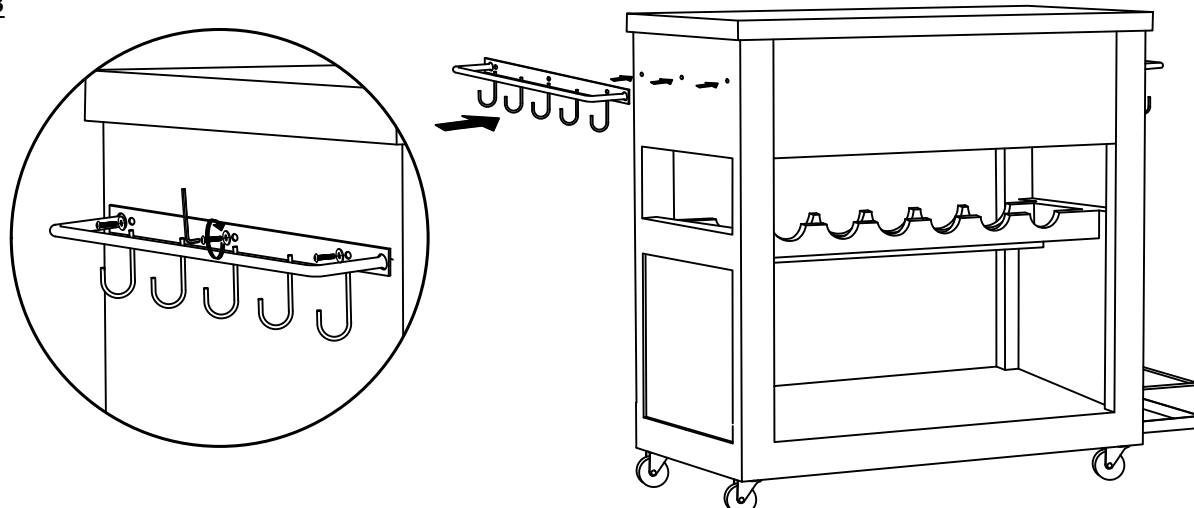
STEP-1



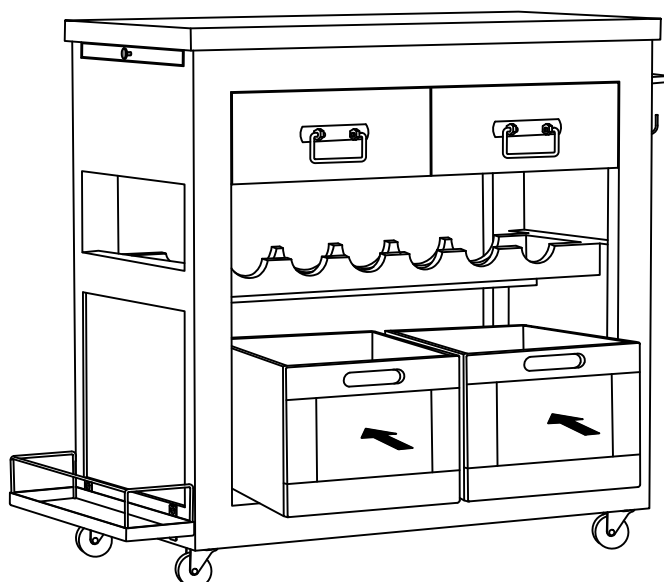
STEP-2



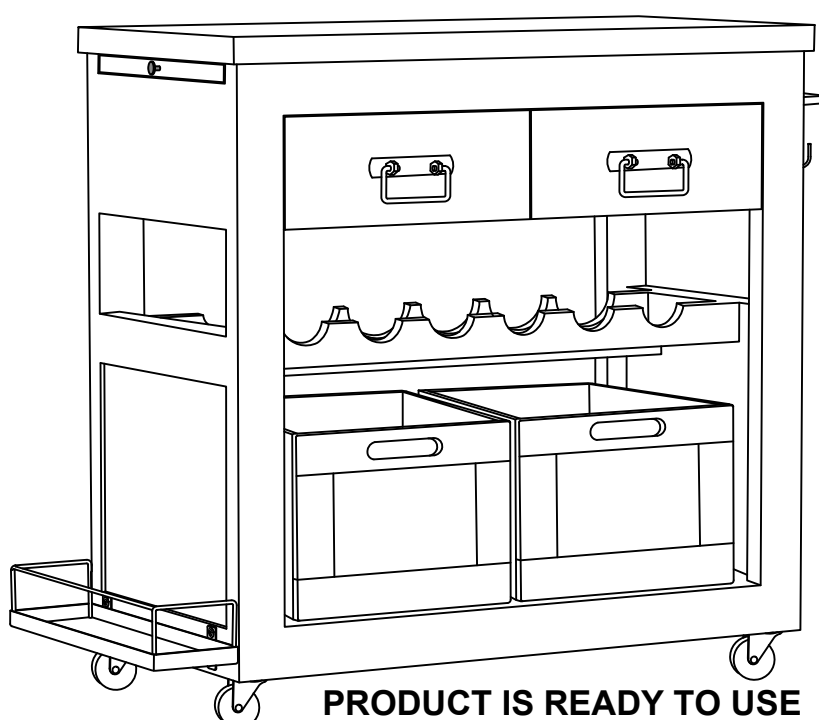
STEP-3



STEP-4



STEP-5



PRODUCT IS READY TO USE