

Achtung!

Vor Montage des Dämpfers
möglichst die Türe demontieren!

Attention!

Démonter si possible la porte
avant le montage de l'amortisseur

Attention!

Door should be disassembled
before assembly of the damper!

Attentie!

Voor montage van de demper
indien mogelijk de deur demonteren!

Attenzione!

Smontare possibilmente la porta
prima di montare l'ammortizzatore!

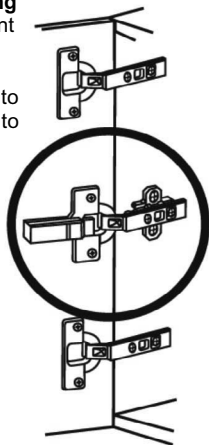
Atencion!

Si es posible, desmontar la püuerta
antes de montar el amortiguador!



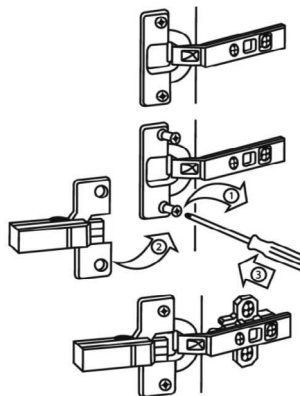
Positionierung

Positionnement
Positioning
Positionering
Posizionamento
Posicionamento



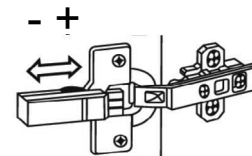
Montage

Montage
Assembly
Montage
Montaggio
Montaje



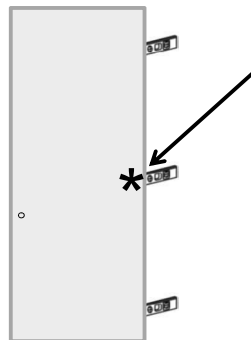
Einstellungen

Réglage
Adjustment
Instelling
Regolazione
Ajuste



www.jutzler.swiss

Mod. 231/75



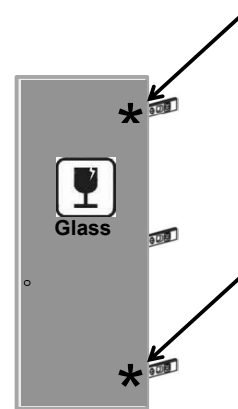
2 Dämpfer bei Glas- und
Spiegeltüren empfohlen

2 amortisseurs recommandés
avec portes en verre et miroir
recommended 2 dampers with
glass and mirror doors

aanbevolen 2 dempers met
glas en spiegel deuren

consigliati 2 ammortizzatori
per ante con vetro o specchio

recomendado 2 amortiguadores
por puerta con cristal o espejo



PACK. 579