

Montage- und Gebrauchsanweisung

(GB) Assembly- and using instruction (F) Instruction de montage et d'utilisation (NL) Installatie- en gebruikshandleiding

55.00303 Blink

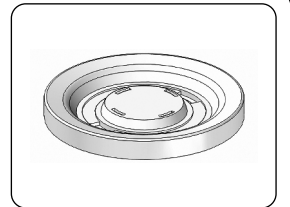
Bedienungsvideo

- (GB) Operating video
- (F) Vidéo d'exploitation
- (NL) Bedrijfsvideo



Zubehör

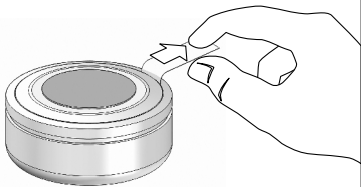
- (GB) Equipment
- (F) Accessoires
- (NL) Accessoires



Batterie-Aktivierung

(GB) Battery activation (F) Activation de la batterie (NL) Batterij activering

1a



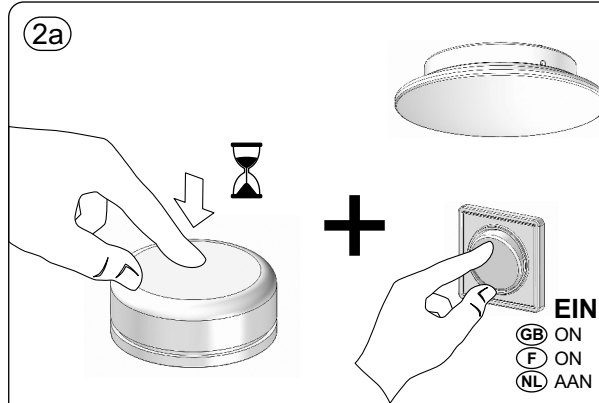
1b



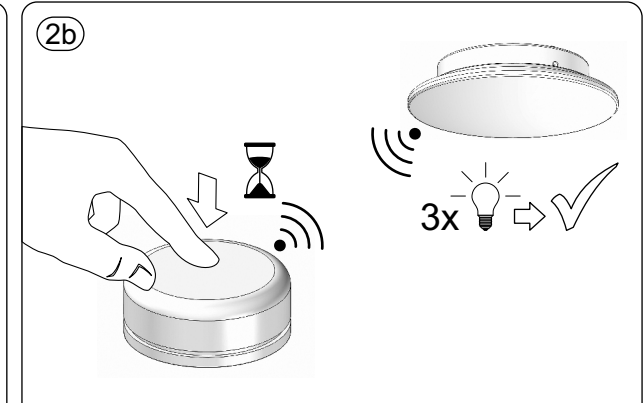
Kopplung (Pairing)

(GB) Pairing (F) Appairage (Pairing) (NL) Koppelen (Pairing)

2a



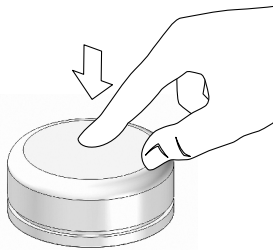
2b



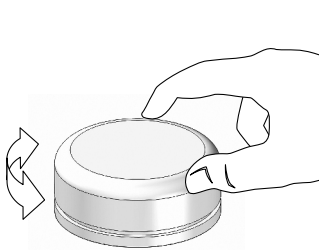
Leuchten-Steuerung

(GB) Lighting control (F) Commande de l'éclairage (NL) Lichtregeling

3a



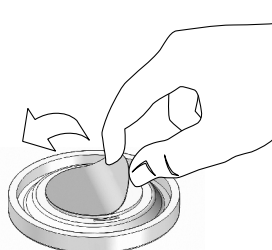
3b



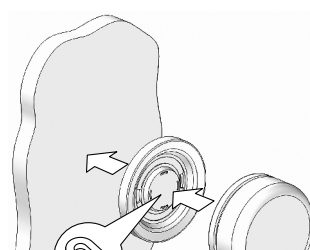
Magnethalter

(GB) Magnet holder (F) Support magnétique (NL) Magneethouder

4a



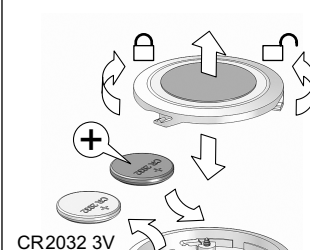
4b



Batteriewechsel

(GB) Battery change (F) Changement de batterie (NL) Batterij vervanging

5a



5b

