

Tools Required: Flathead screwdriver, Phillips screwdriver, pliers, wire cutters, wire strippers, electrical tape, safety glasses.

Bulb Recommended: (2) E14 60W Maximum, Alternate bulb (2) 13W CFL.

Estimated Assembly Time: 30-45 minutes

Preparation: Identify and inspect all parts before beginning installation. Check package content list and diagrams below to be sure all parts are present. If any parts are missing or damaged, do not attempt to assemble, install, or operate the fixture. Contact customer service for replacement parts.

Fixture can only be mounted in the direction indicated on page 2.

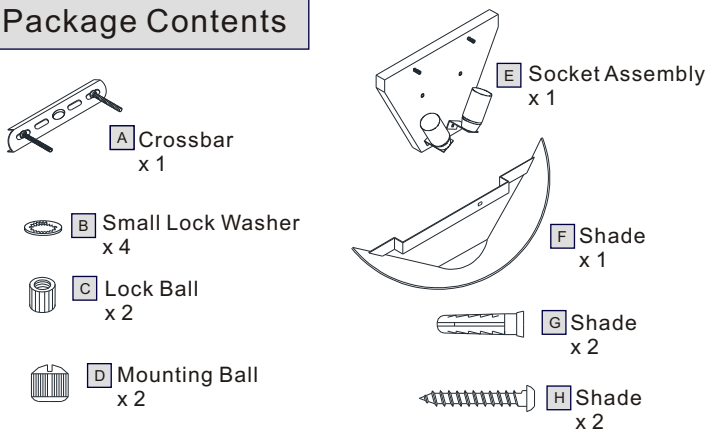
⚠ Warnings and Cautions

Turn off electricity at circuit breaker or main fuse box before installation. Consult a licensed electrician if in doubt.

These instructions are provided for your safety. It is very important you read them completely before installing the fixture. We strongly recommend that a licensed, professional electrician perform the installation.

Disconnect fixture from power source before replacing bulbs. Make sure bulbs are given sufficient time to cool before removal. Do not subject glass parts to any shock while in operation or shattering may result.

Package Contents



STEP 1 - Install Crossbar

- A. Drill two holes in the ceiling with a Electric Drill. *Electric Drill is required for this step. The two Plastic Anchors (G) are respectively inserted into two holes. Attach Crossbar (A) to the Plastic Anchors (G) with the Tapping Screw (H) until snug.
*Crossbar (A) Has been installed with Mounting Screw, Hex Nut and Metal Washer.

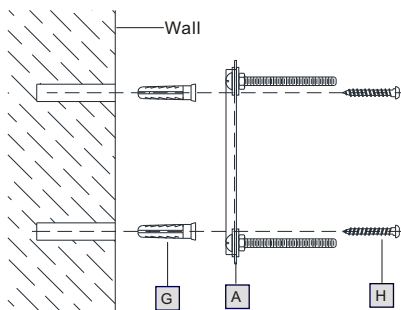


Figure 1

STEP 2 - Wire Connections

- A. Connect main SUPPLY WIRE (Brown-live, Blue-neutral Green Yellow-earth) into the Terminal Block making sure all connections are tight.

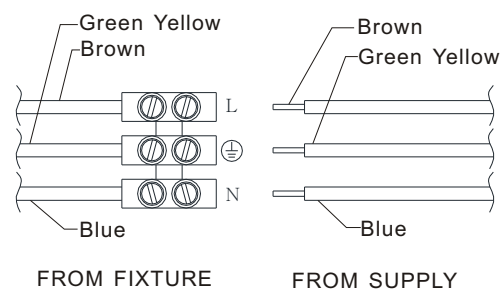


Figure 2

STEP 3 - Attach Fixture Body to Crossbar

- A. Place the Backplate of the Socket Assembly (E) over Mounting Screws of the Crossbar (A) and secure with the Mounting Ball (D). Hand tighten until snug.

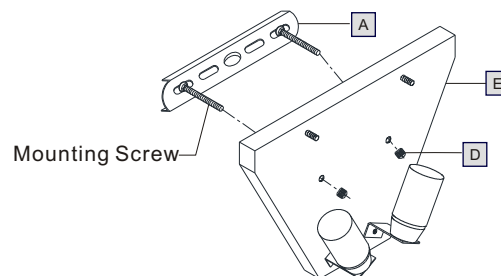


Figure 3

STEP 4 - Attach Shade to Socket Assembly And insert Bulb

- A. Pass holes on the Bar and the Small Lock Washers (B) over the bolts on the Socket Assembly (E) and secure with Lock Balls (C).
B. This fixture use standard bulbs with a standard screw base. Maximum 60 watts. Insert bulb and screw properly into place.

Your fixture is now assembled and ready to use. Enjoy!

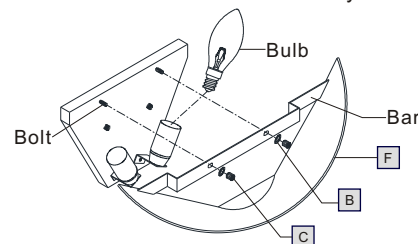
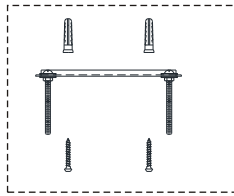


Figure 4

Thank you for purchasing a Quoizel product.

Need assistance with parts or assembly? Call T : +44 (0) 1420 82377
or visit us on-line at www.elsteadlighting.com

QZ TFKM8802VB

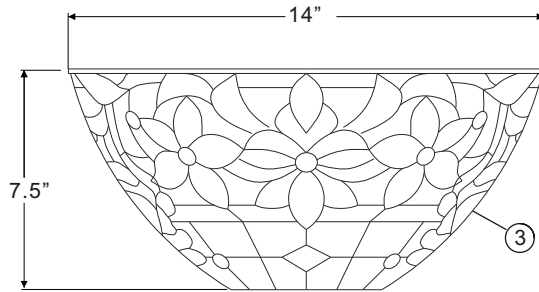


2

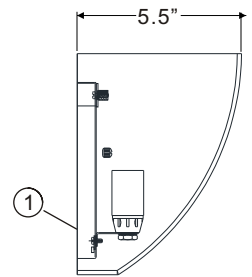


(2)E14 60W B10
Bulbs (Not Supplied)

Fixture can only be
mounted in the
direction indicated



3



1

NOTE: ALL DIMENSIONS ARE ROUNDED UP TO THE NEAREST 1/2"

NO.	PART NUMBER	REPLACEMENT PART DESCRIPTION	REQ.
1	18802TFIK	BASE TFIK8802	1
2	8952KIT	MOUNTING HARDWARE	1
3	G8186SH	SHADE TIFFANY INGLENOOK 7H X 14D	1