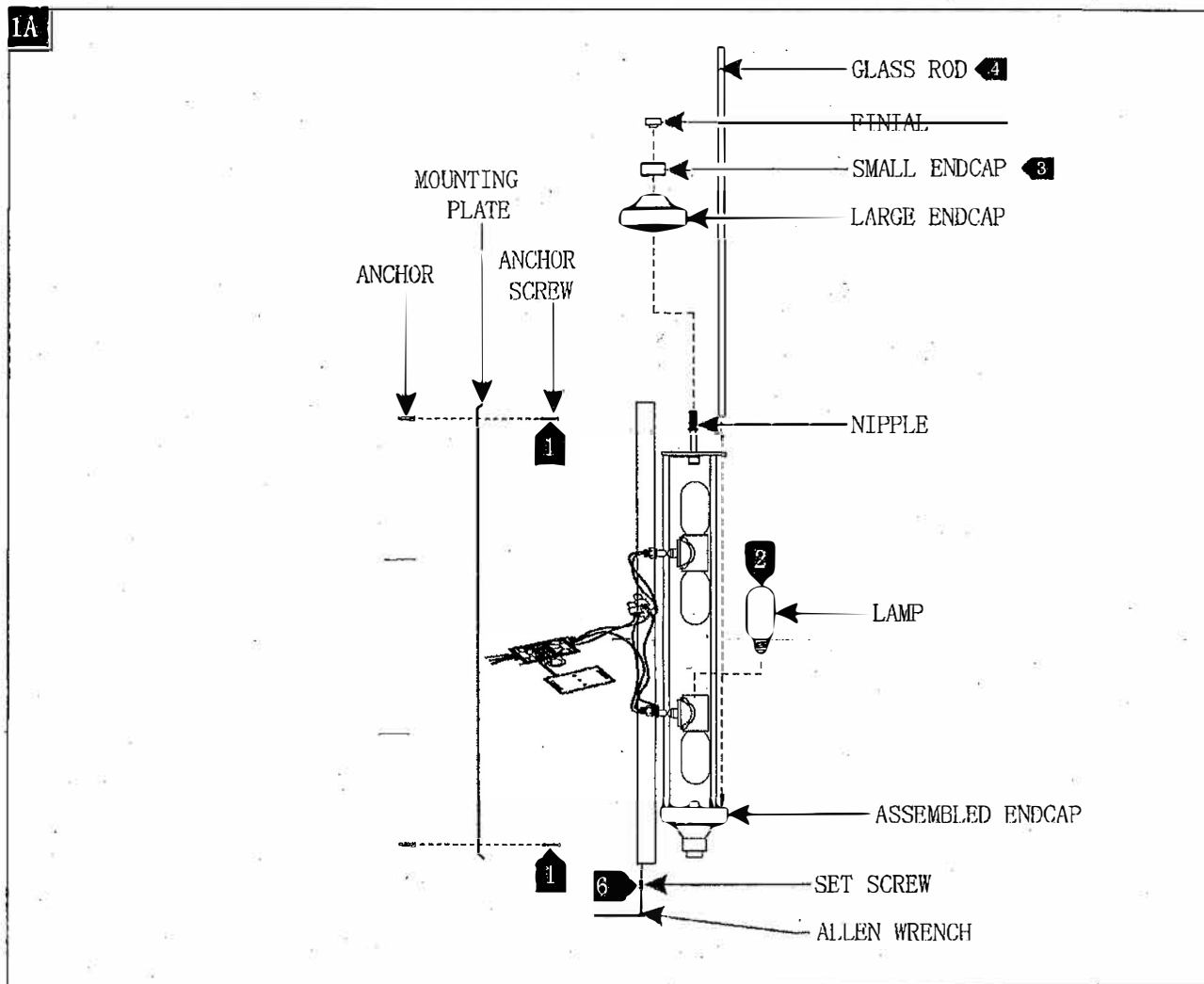


GENERATION LIGHTING



- 1** Install the mounting plate to the wall by screws.
- 2** Screw the lamp into the socket. Refer to the label on the socket for Max Wattage Information.
- 3** On one end of the fixture, place the large endcap and small endcap onto the nipple, then secure them in place by screwing the finial onto the nipple.
- 4** Install the glass bars by carefully sliding them down the channel and into the assembled endcap, then secure them in place by installing the remaining endcap. **REPLACEMENT:** Remove one of the endcaps, remove/replace old glass bar with new one, and reinstall the endcap.
- 5** Follow enclosed supplement installation instructions for electrical and fixture installation onto the wall.
- 6** Mount the fixture base onto the mounting plate and secure it with the set screw using an Allen wrench. **WARNING:** ensure that the set screws are tightly in place, especially when mounted horizontally.