

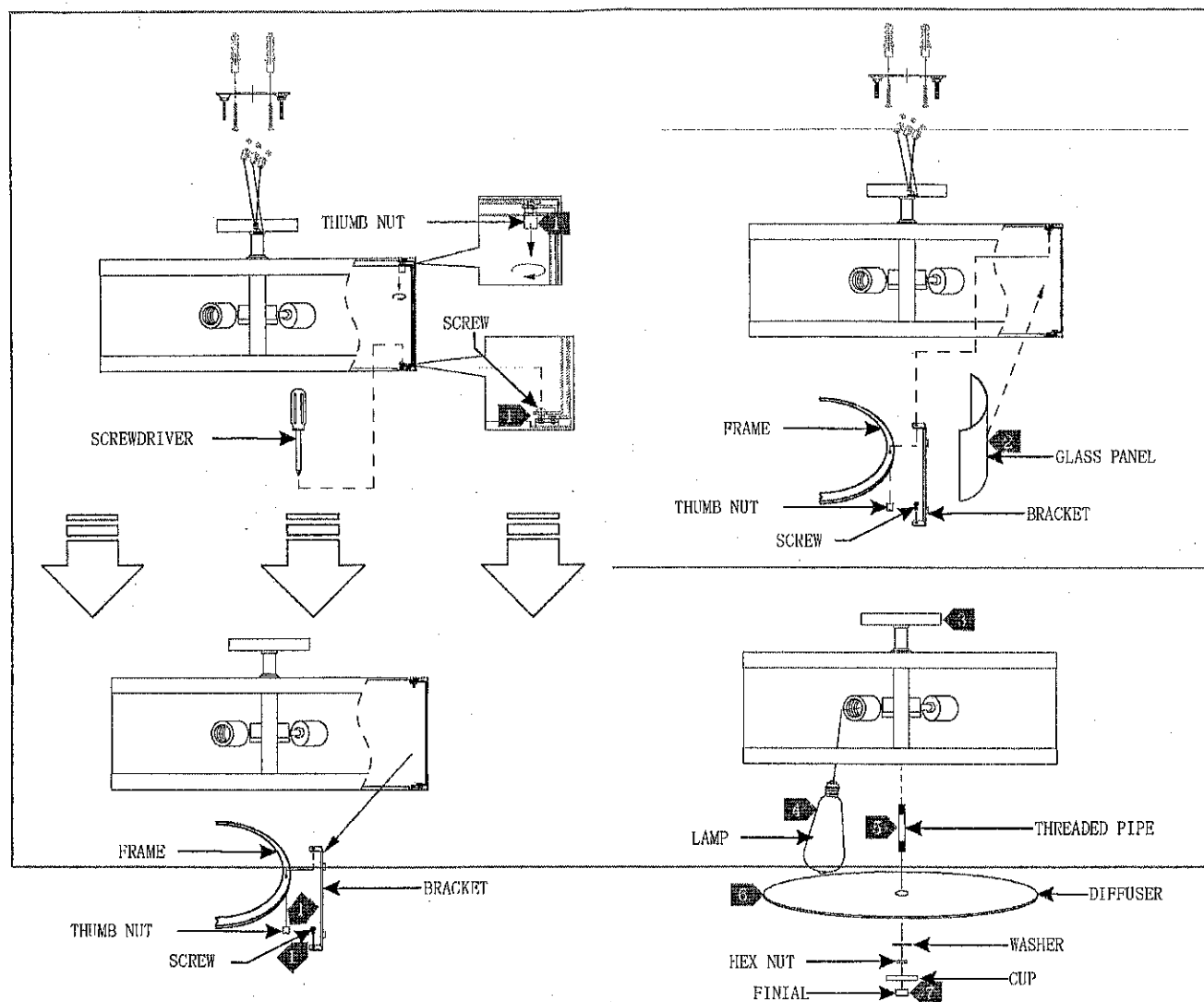
# Installation Instructions for Harrow Semi-Flush Mount

CE UK  
CA

SF341-SF342

SF341L, SF342L 1.0

## GENERATION LIGHTING



- 1 Use a screwdriver to remove the screws from the lower frames and thumb nuts from the upper frames. Then remove the upper and lower frames along with the brackets.
- 2 Insert the glass panels into the fixture frame and reinstall the side brackets and fasten the screws the bottom frame. Then reinstall the two top half rings and secure them by fastening the four cap nuts.
- 3 Follow enclosed supplement installation instructions for electrical and fixture installation onto house ceiling.
- 4 Screw the lamps into the sockets. Refer to the label on the lamp socket for Max Wattage information.
- 5 Screw the threaded pipe to the bottom of the fixture.
- 6 Place the diffuser and washer (in that order) onto the threaded pipe and secure it in place with the hex nut (Do not over-tighten).
- 7 Place the cup onto the threaded pipe and secure it in place by screwing the finial onto the threaded pipe.