

Installation Instructions for Paulson Flush Mount

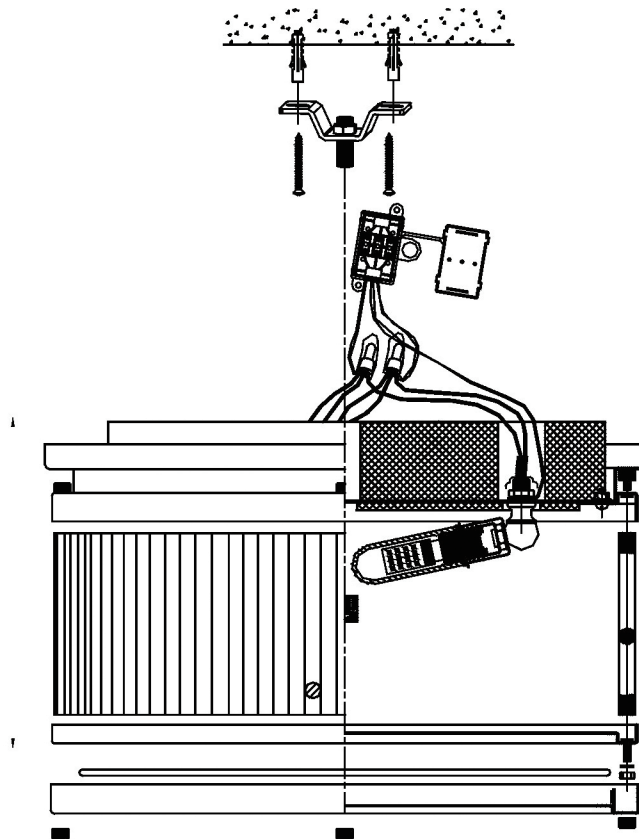


FM512, FM516

A/0

GENERATION LIGHTING

1A



- 1 Secure the mounting plate to the junction box.
- 2 Follow enclosed supplement installation instructions for electrical and fixture installation onto ceiling.
- 3 Place the fixture base onto the threaded nipple and secure it in place by screwing the cap nut onto the nipple.
- 4 Screw the lamps into the sockets. Refer to the label on the lamp socket for Max Wattage information.
- 5 Place the diffuser inside the fixture ring and secure the shade ring to the bottom of the fixture using the knurled nuts.