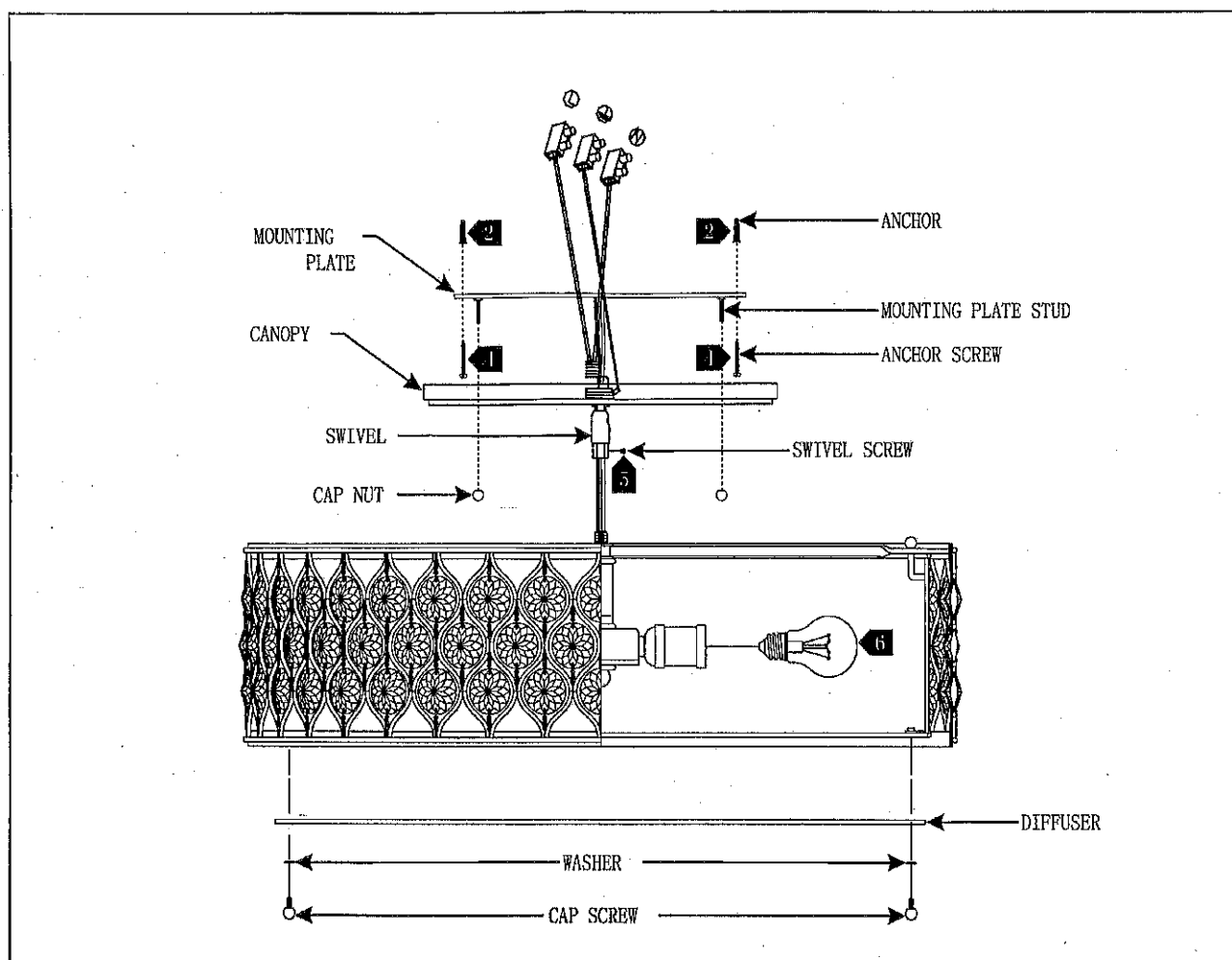


Installation Instructions for  
Lucia 6 Light Semi Flush Mount



SF329 1.0

GENERATION LIGHTING



- 1 Temporarily install the mounting plate to the junction box and mark the anchor hole locations, then remove the mounting plate.
- 2 Drill appropriate sized holes at the marked locations and install the anchors.
- 3 Secure the mounting plate to the ceiling.
- 4 Install the anchor screws into the anchors.
- 5 Feed the fixture wires through the swivel and canopy, then screw the canopy onto the fixture and tighten the swivel screw.
- 6 Screw the lamps into the sockets. Refer to the label on the lamp socket for Max Wattage information.
- 7 Follow enclosed supplement installation instructions for electrical and fixture installation onto house ceiling.
- 8 Neatly place all the wires into the junction box, place the canopy onto the mounting plate studs, and secure it in place by screwing the cap nuts onto the studs.
- 9 Align the holes on the diffuser with the holes on the fixture, then secure it in place using the washers and cap screws.