



WARNING!

Be sure electrical power is OFF before and during installation or maintenance. The light fitting must be installed by a qualified electrician, in accordance with all applicable local codes

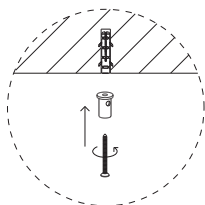
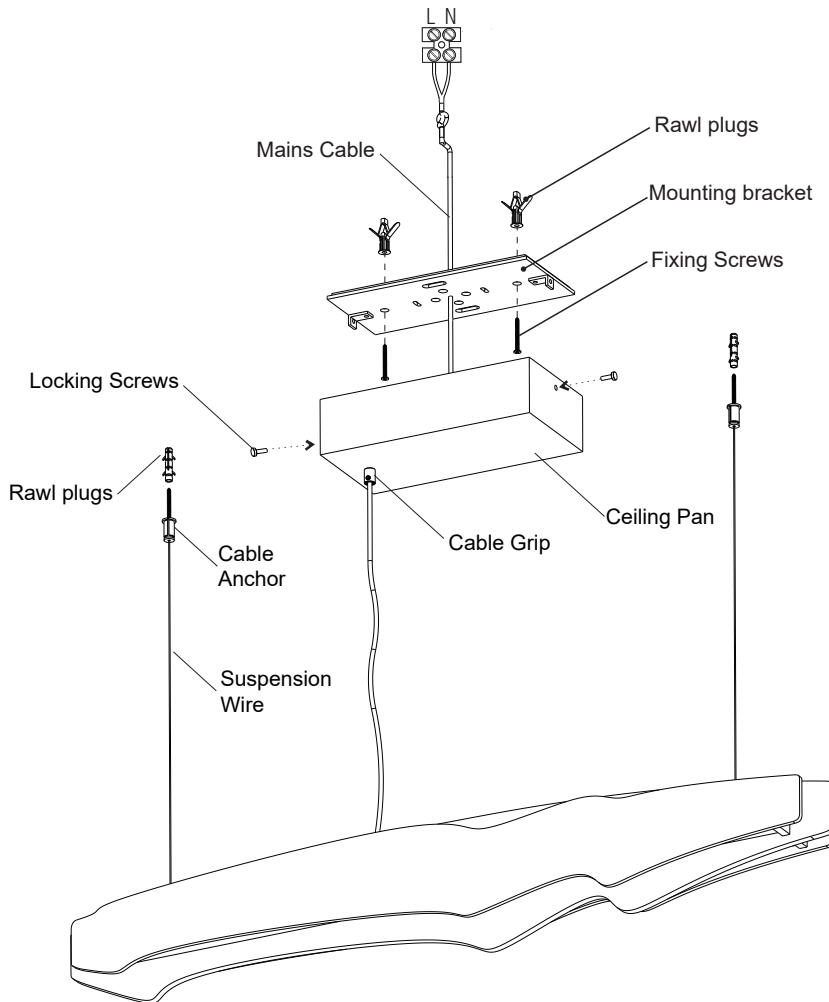
Ensure that the rated light fitting voltage requirements are compatible with the available mains supply in which it will be installed.
All LEDS are included in your lamp. Never touch the LED surface with your bare hands as this may reduce the life of your LED.
Do not alter, relocate or remove any electrical component.

Line: Horizon

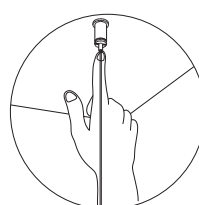
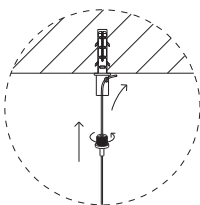
Family: Pendant

Description: Horizon Accord Pendant 1470/1471/1472

Material:



Cable Anchor



Suspension Cable Adjustment



ATTENTION!

FAILURE TO COMPLY WITH THESE INSTRUCTIONS MAY CAUSE ACCIDENTS AND LOSS OF PRODUCT WARRANTY. It's recommended to read these instructions completely and carefully before proceeding.

SAVE THESE INSTRUCTIONS FOR FUTURE REFERENCE.

ACCORD Lighting guarantees coverage against manufacturing defects including electrical components and finishes, for a period of **two years**, under normal use, from the date of purchase. For warranty service, please contact your local dealer for further instructions. Proof of date of purchase will be required for validation of warranty service.

The responsibility of the manufacturer regarding the product warranty is related to the correct observation of the instructions contained in this manual. The manufacturer is not responsible for any damage to the product caused by accidents, alterations of any kind, improper usage or improper installation. See the website for additional warranty details.

ACCORD Lighting reserves the right to change the dimensions and specifications contained in this manual without prior notice, in accordance with its policy of continuous product improvement. Please, contact the manufacturer if additional information is necessary. The illustrations in this manual are for guidance only and may vary in scale, dimensions and model details.

ASSEMBLY INSTRUCTIONS
QN-HORIZON-LED-140-TEAK

1. Turn power off
2. Install the suitable (provided) rawl plugs (or preferred fixings into the ceiling using the mounting bracket as a template.
3. Install the mounting bracket to the ceiling using the provided screws (or your preferred fixings)
4. Mark the ceiling for the suspension wires equal distance from the ceiling pan and install the provided rawl plugs (or your preferred fixings).
5. Cut the suspension cables to size and thread through cable anchors, add and screw into rawl plugs (this will allow you to install the ceiling pan when the suspension cables are installed.
6. Feed the mains cable through the cable grip on the ceiling pan to required length.
7. Tighten cable grip with a small flat head screwdriver
8. Make the electrical connection.
9. Offer ceiling pan to mounting bracket and install both locking screws.

Note: This fitting uses a LED light source built into the unit.