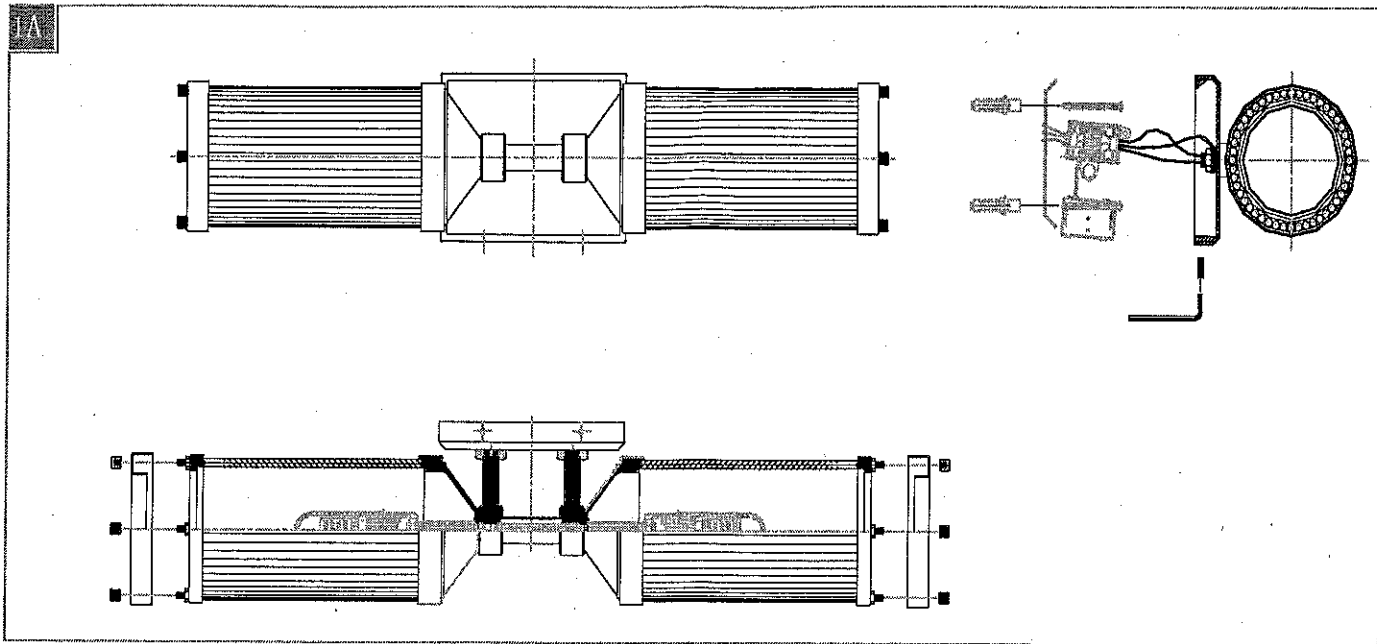


## GENERATION LIGHTING



1. Secure the mounting plate to the wall.
2. Follow enclosed supplement installation instructions for electrical and fixture installation onto the wall.
3. Mount the fixture base onto the mounting plate and secure it with the set screw using an Allen wrench.
4. Screw the lamps into the sockets. Refer to the label on the socket for Max Wattage Information.