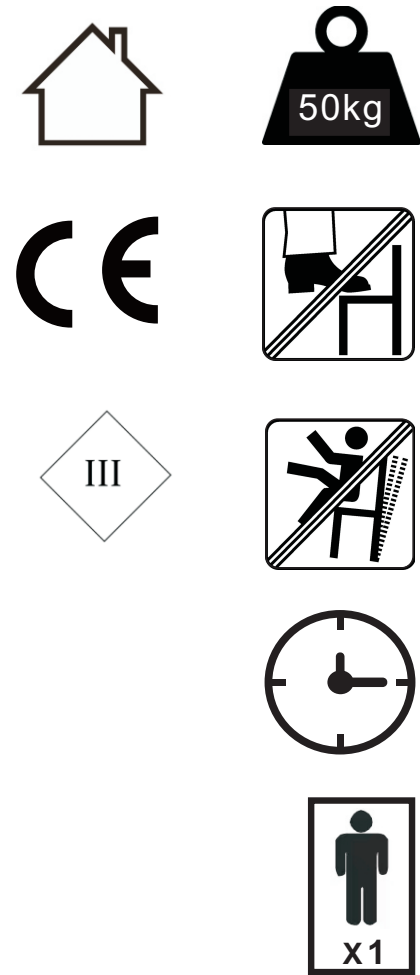
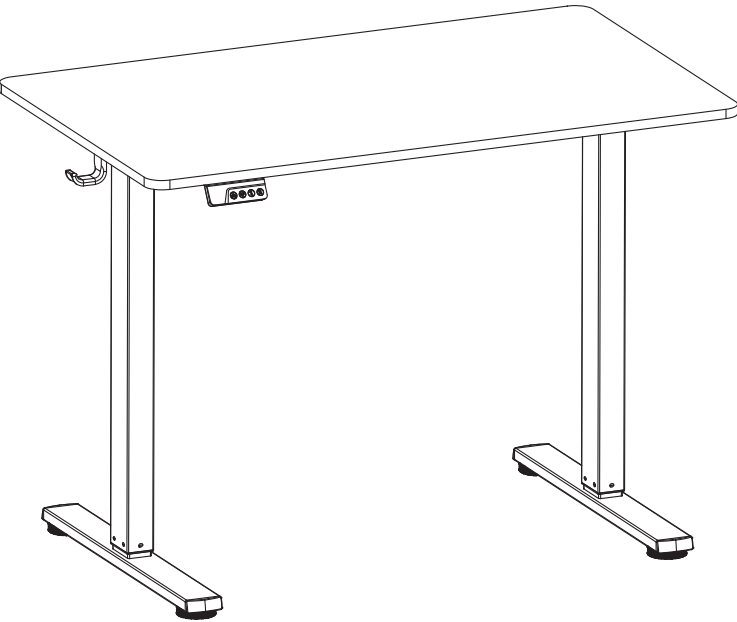


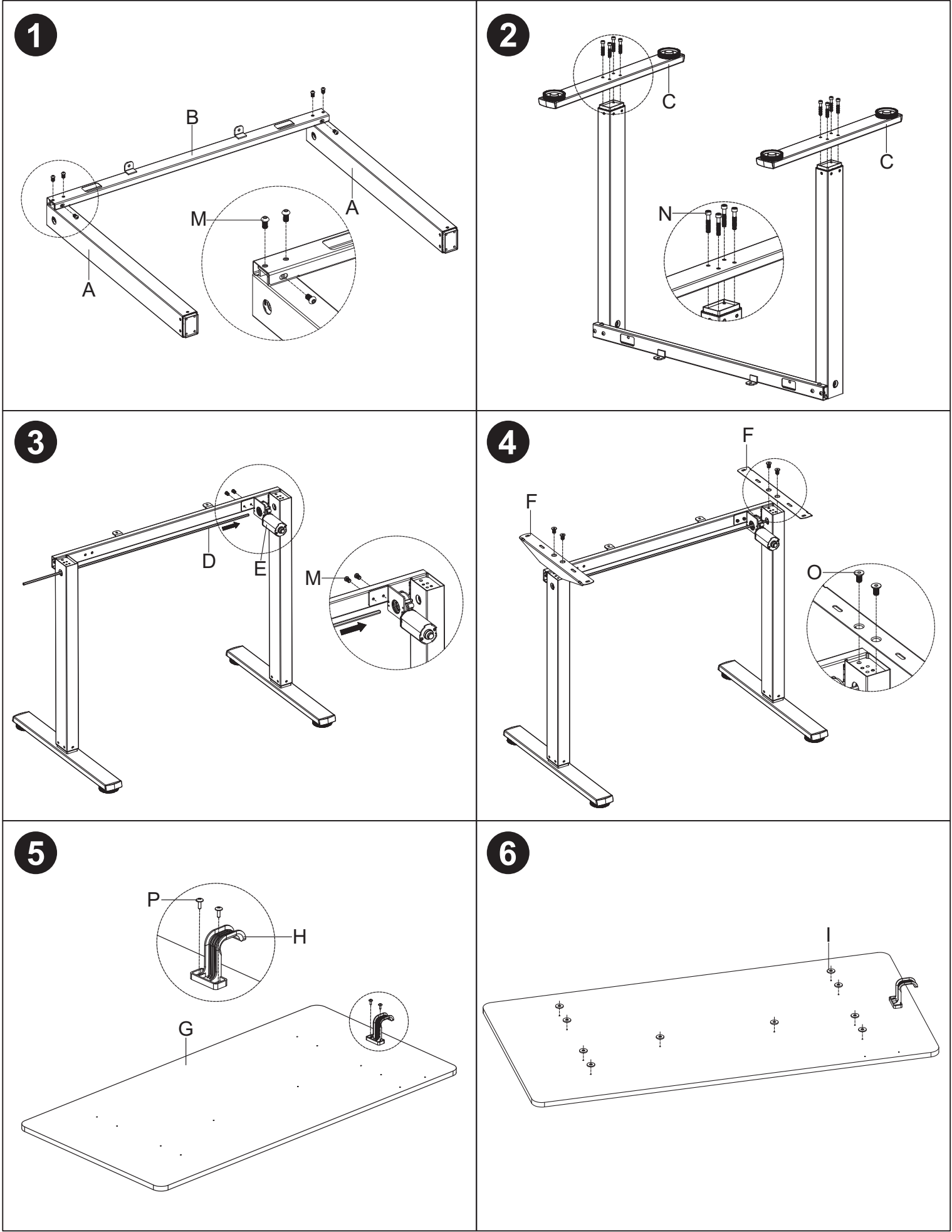
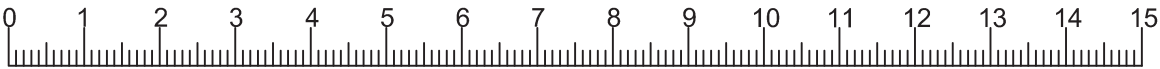
04310030/01

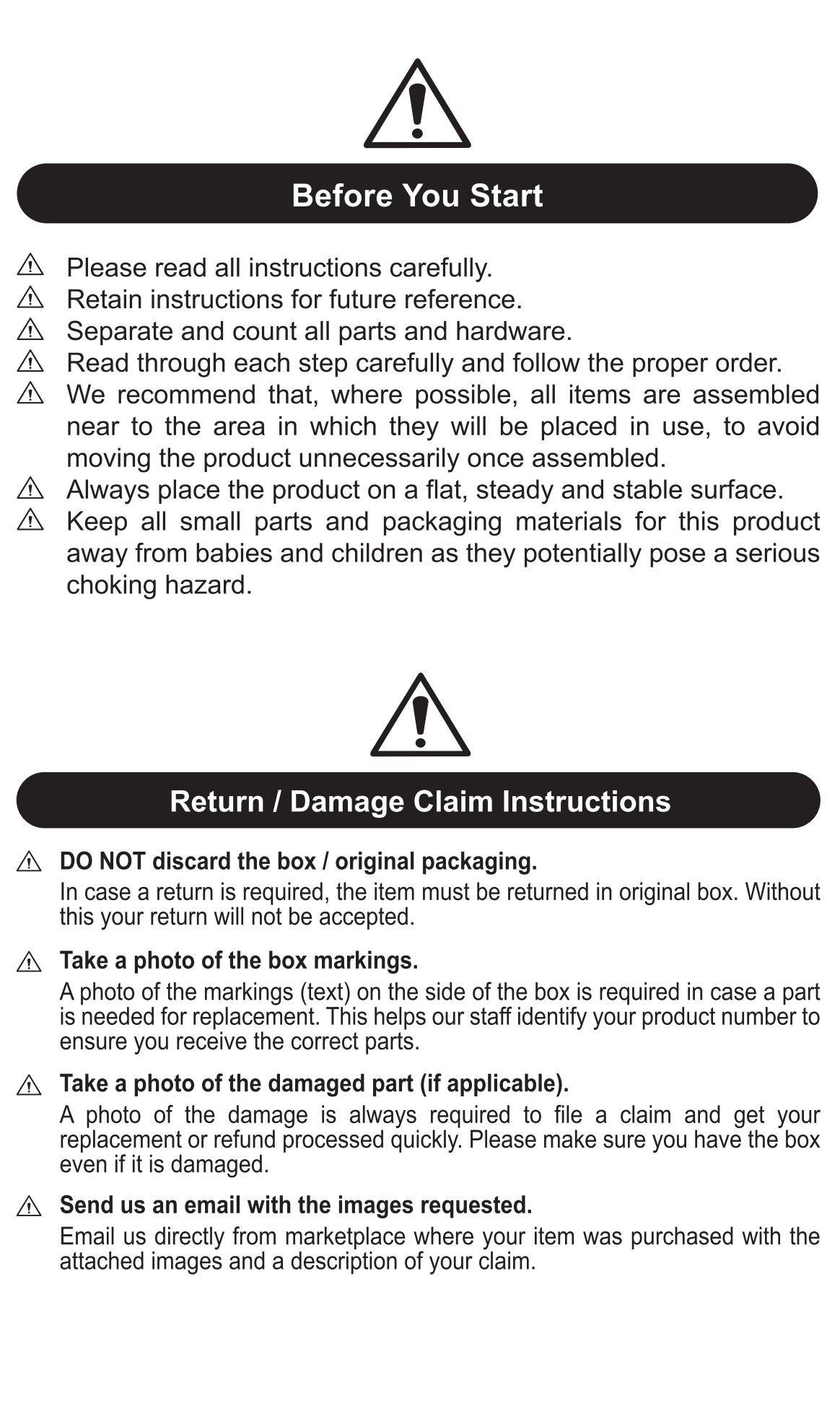
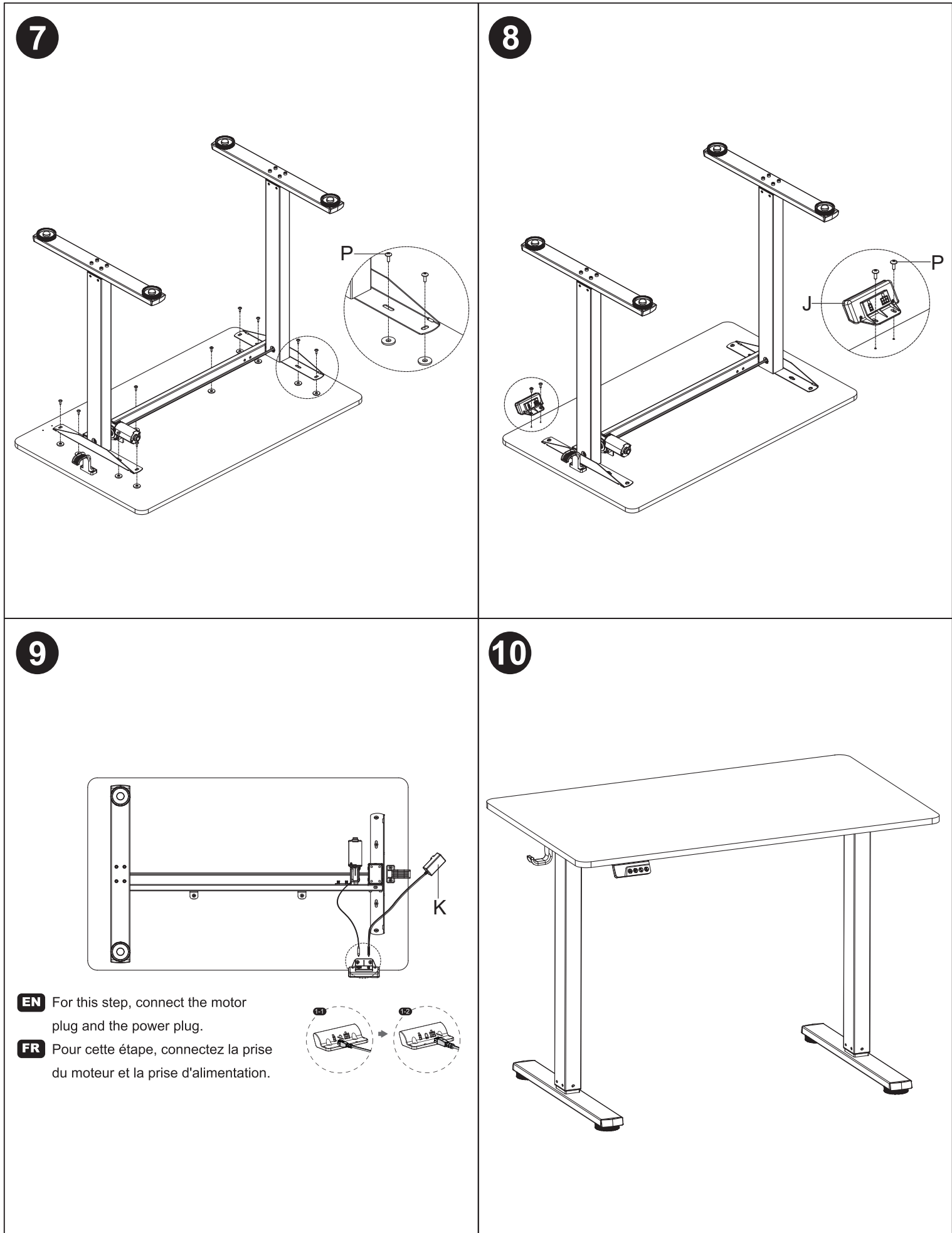
BDSK Handels GmbH & Co. KG  
Mergentheimer Strasse 59  
97084 Würzburg / Germany

CARRYHOME  
Möbelmode zum Mitnehmen. **xxxutz**

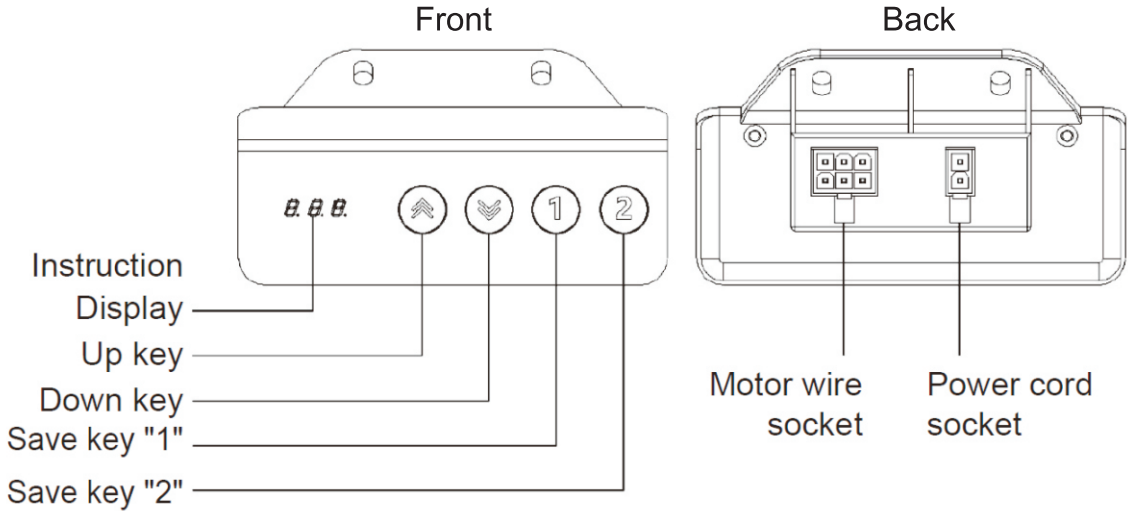


A	x2	B	x1	C	x2	D	x1	E	x1	F	x2
G	x1	H	x1	I	x10	J	x1	K	x1	L	x1
M	x8	N	x8	O	x4	P	x14	Q	x1		
M6*12mm		M6*35mm		M8*16mm		M4*14mm		M5			





# Controller instruction



## Up/Down Key Operation

- Press the "⬆" key to raise the desk until it reaches the highest point.
- Press the "⬇" key to lower the desk until it reaches the lowest point.
- Hold the "⬆" or "⬇" key to start the desk movement, achieving a smooth start.

## Position Storage/Memory Position Operation

- Position Storage: You can store 2 memory points. Storage method: When the desk reaches the desired height, press and hold the "1/2" key for 3 seconds until the digital display flashes, saving the current height as a memory point.
- Memory Position Operation: Briefly press the "1/2" key. The digital display will flash the memory height value and show "P01/2" for 2 seconds. The desk will automatically move to the stored height. During movement, pressing "⬇" or "⬆" will stop the operation.

## Clear Error Code

When an error is displayed, fix the issue and press and hold the "1" key for 3 seconds. If the error is not cleared, the display will continue to show the error after the motor operates.

## Zero Position Reset

Press and hold the "⬇" and "1" keys for 3 seconds until the controller displays a flashing "RST." The desk will automatically lower to the lowest position, rebound about 1 cm/0.4", and complete the reset process.

## Lock and Unlock

- Lock: Press and hold the "⬇" and "⬆" for 3 seconds. When the display shows "L," the system is locked and cannot be operated.
- Unlock: Press and hold the "⬇" and "⬆" for 3 seconds. When the display changes from "UL" to the normal digital display, the system is unlocked.

## Anti-Collision Sensitivity Adjustment

Press and hold the "1" + "2" keys for 3 seconds. The display will show "ST(0-9)." Use the up/down key to adjust sensitivity (9 is the highest sensitivity, 0 turns it off). Press "1" to exit and save the setting.

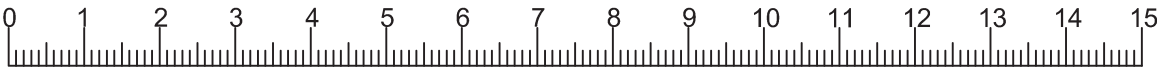
## Internal Testing (Function is disabled by default in factory settings)

### Rotation Direction

- Clockwise/Counterclockwise: Press and hold the "⬆" and "2" keys for 3 seconds. The display will show "000/111," indicating clockwise/counterclockwise upward movement.

### Automatic Testing

- The system supports automatic operation, with a fixed runtime of 2 minutes (runs for 2 minutes, stops for 3 minutes, and repeats indefinitely).
- Enter: Press and hold the "⬇" and "2" keys for 3 seconds. The display will show "tst", indicating automatic test mode.
- Exit: Press and hold the "1" key for 3 seconds. The display will show height, indicating exit from automatic test mode.



Protection Modes	
E1	Alarm when voltage exceeds the required value. Power off first, check the connection between the power supply and control terminal, then restart.
E6	Alarm when voltage is below the required value. Power off first, check the connection between the power supply and control terminal, then restart.
HOT	Overheat protection: The motor will stop running if operated continuously to prevent damage. Wait for a while before making any further height adjustments.
E11	Alarm when the motor is not detected. Power off, check the connection between the motor and control terminal, then power on again.
E13	Hall signal lost. If this occurs repeatedly, the unit needs repair.
E16	Block alarm. If the alarm occurs while the desk is rising, remove the items from the desk and try again. If the alarm occurs while the desk is lowering, first turn off the power supply, remove the items from the desk, and then power on again.
E18	Overload alarm. If the alarm occurs while the desk is rising, remove the items from the desk and try again. If the alarm occurs while the desk is lowering, first turn off the power supply, remove the items from the desk, and then power on again.
Obstruction Protection (E02)	During operation, if the desktop shakes, collides, or tilts, the system will trigger an alarm and stop immediately. The protection can be automatically cleared by reversing the desk for a preset distance, or manually cleared by pressing any key during reverse movement. Before resuming operation, ensure the desk is free from the aforementioned issues

