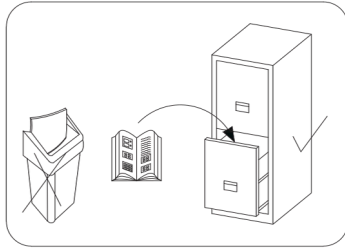
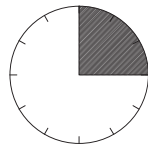


# Montageanleitung Schrank 150

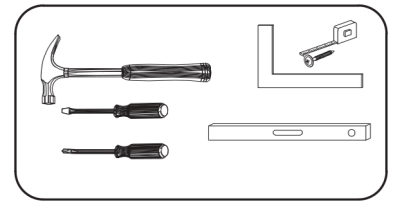
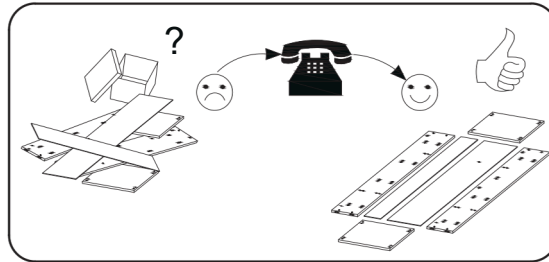
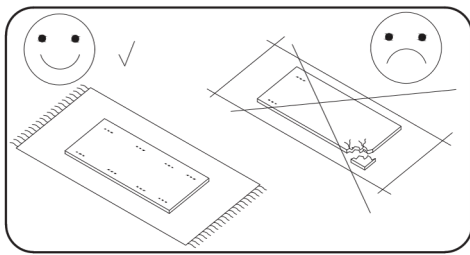
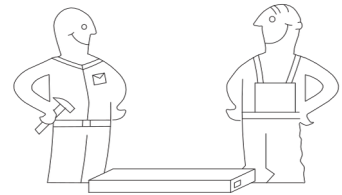
**D MONTAGEANLEITUNG**  
**GB ASSEMBLY INSTRUCTIONS**  
**CZ MONTÁŽNÍ NÁVOD**



Montagezeit Time  
to assemble



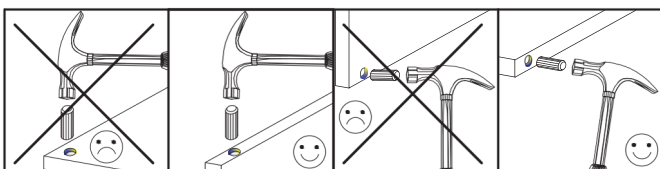
3 hours  
3 zeit

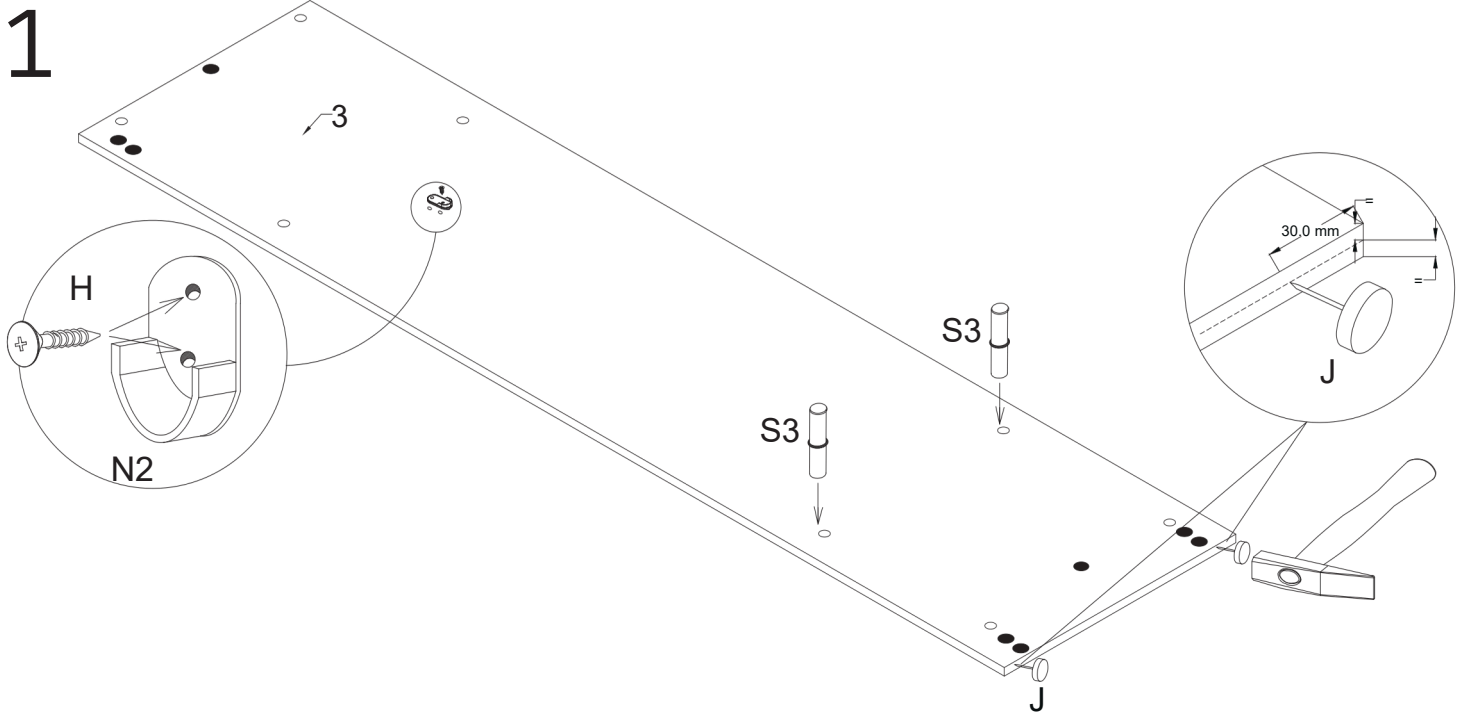
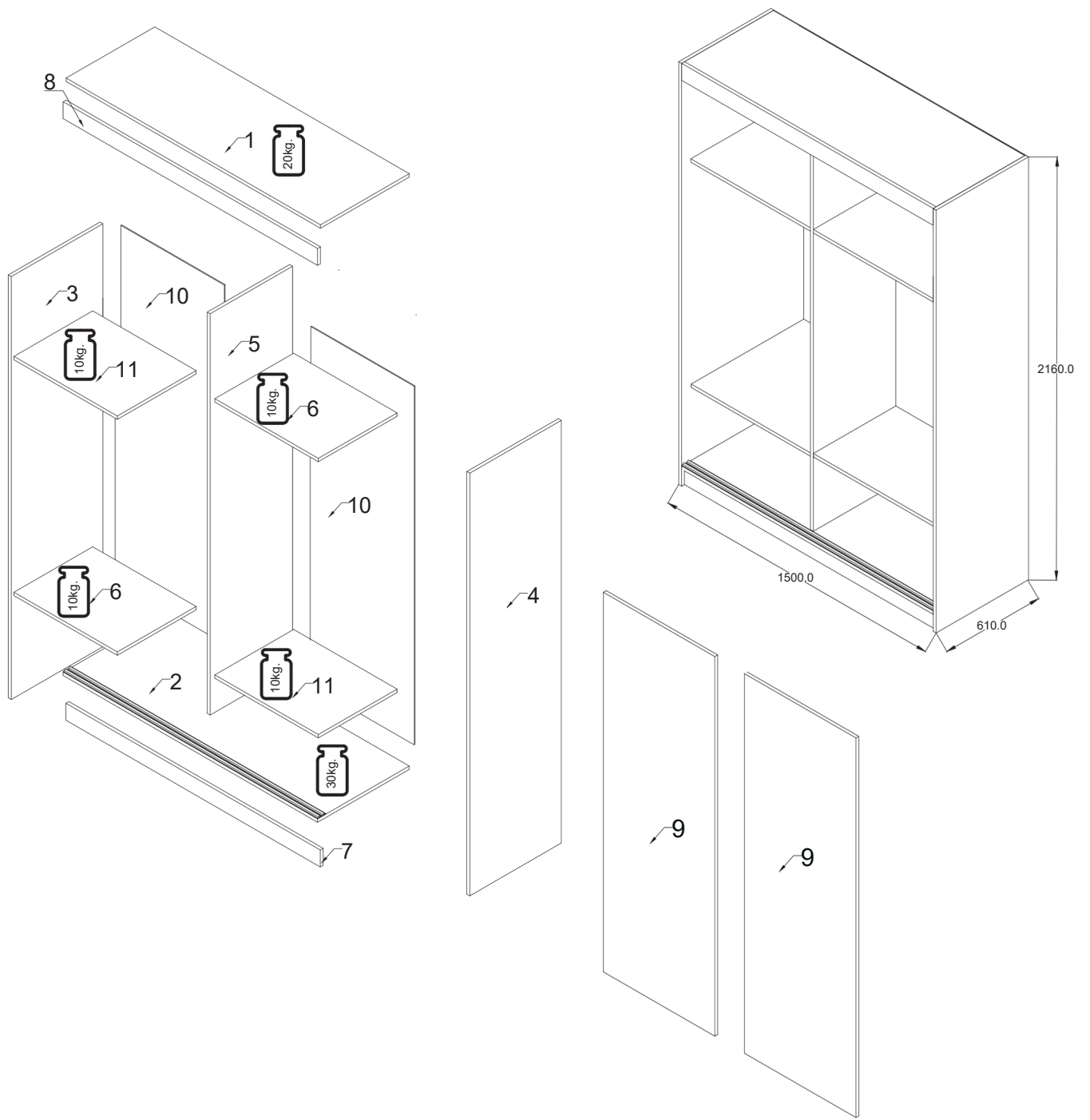


Nr	X mm	Y mm	Z mm	Szt.
1	1468	593	16	1
2	1468	610	16	2
3	2160	610	16	1
4	2160	610	16	1
5	2028	470	16	1
6	726	470	16	2

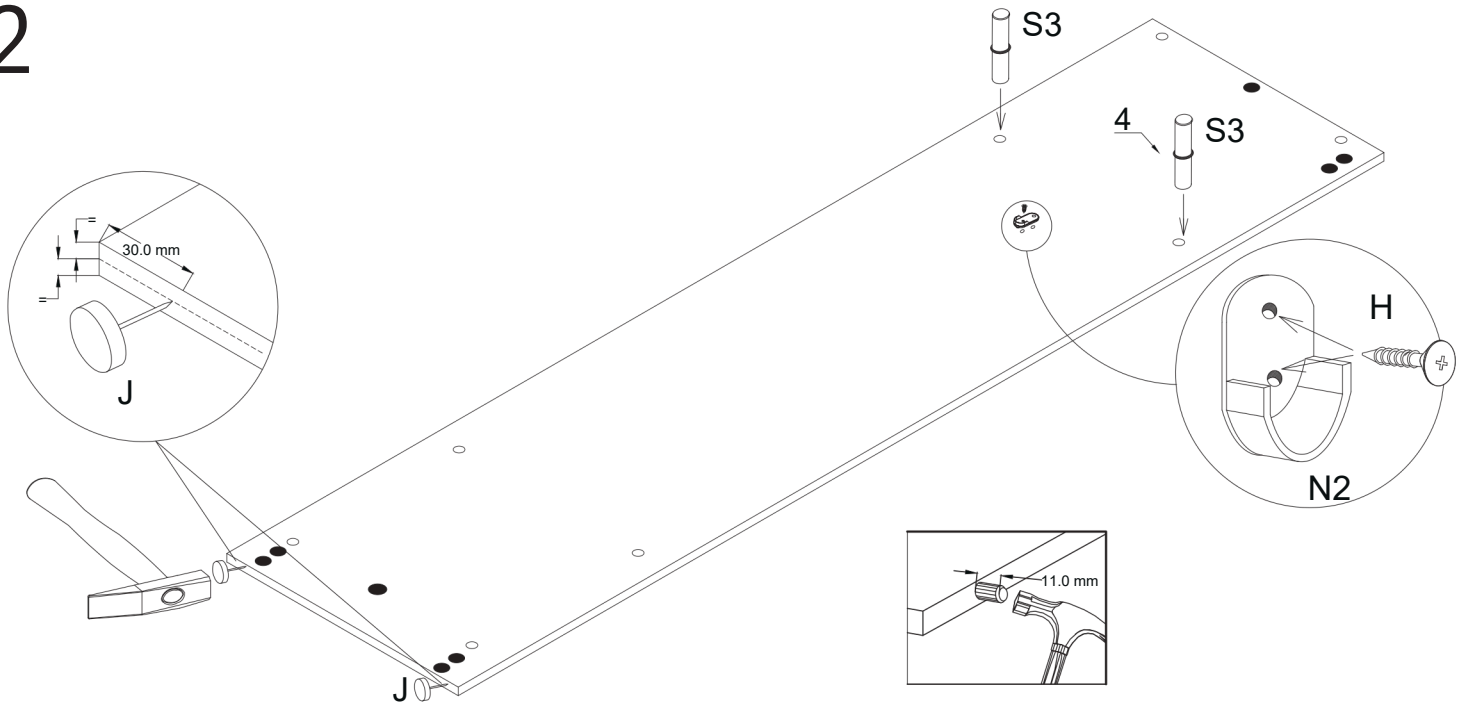
Nr	X mm	Y mm	Z mm	Szt.
7	100	1468	16	1
8	70	1468	16	4
9	2015	741	16	1
10	2035	745	3	2
11	726	470	16	2

8.0x35 D	S	A	B	X	X1	N2	M	M'	S3	4.0x12 H1
18	24	2	2	2	20	4	4	4	8	28
U	S1	L-722 R	L-1466 F	3.0x13 Q	J					
1	60	2	4	24	8					

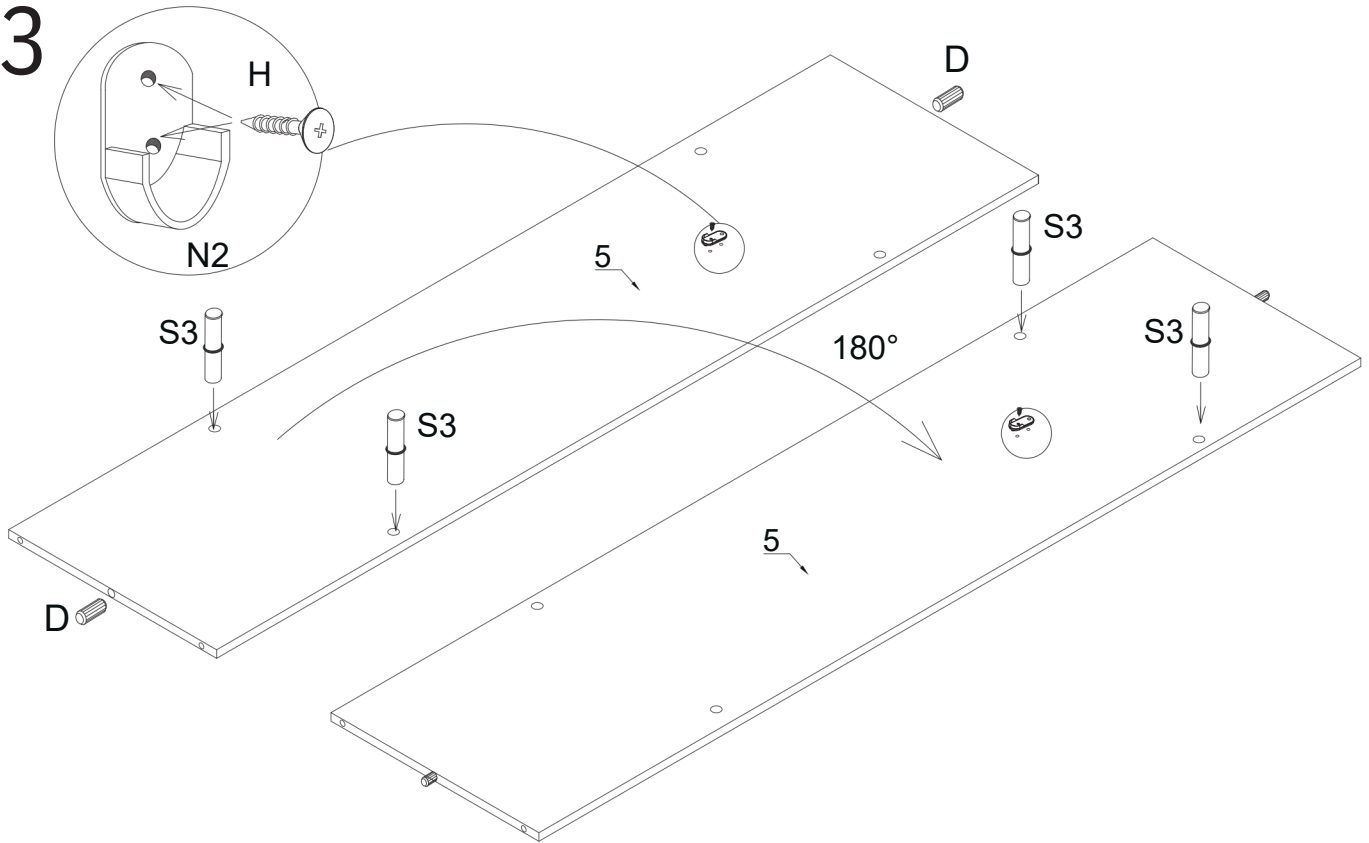




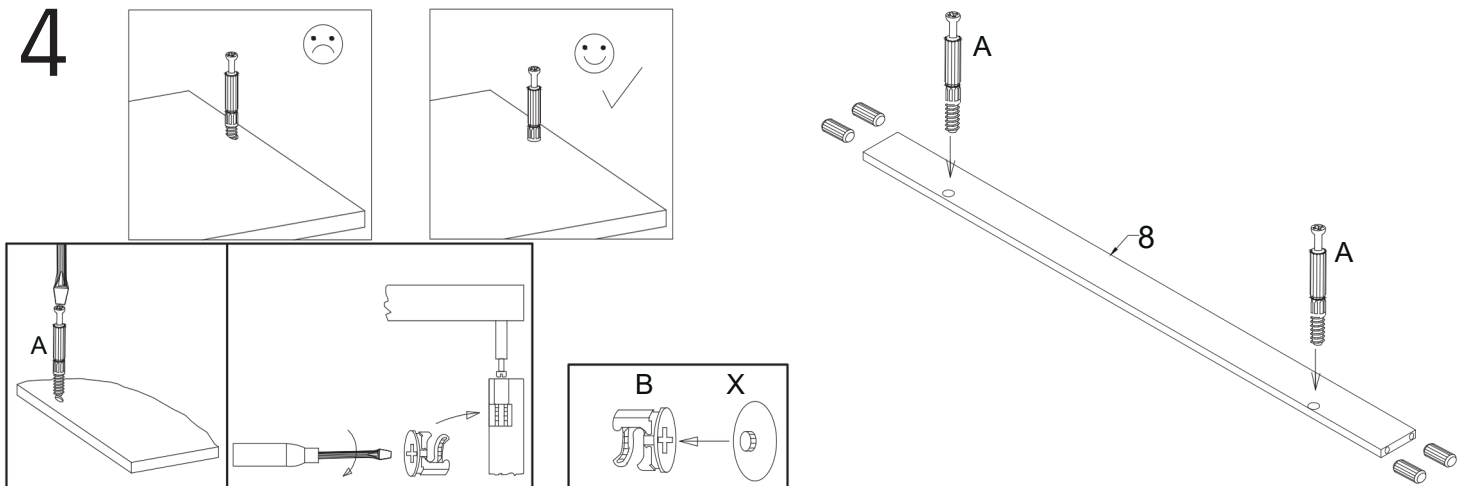
# 2



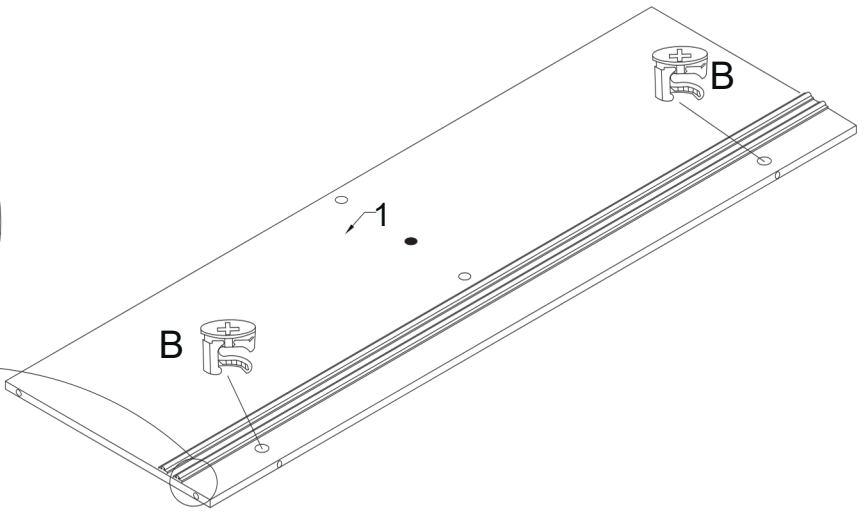
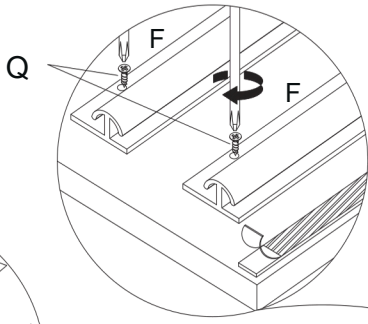
# 3



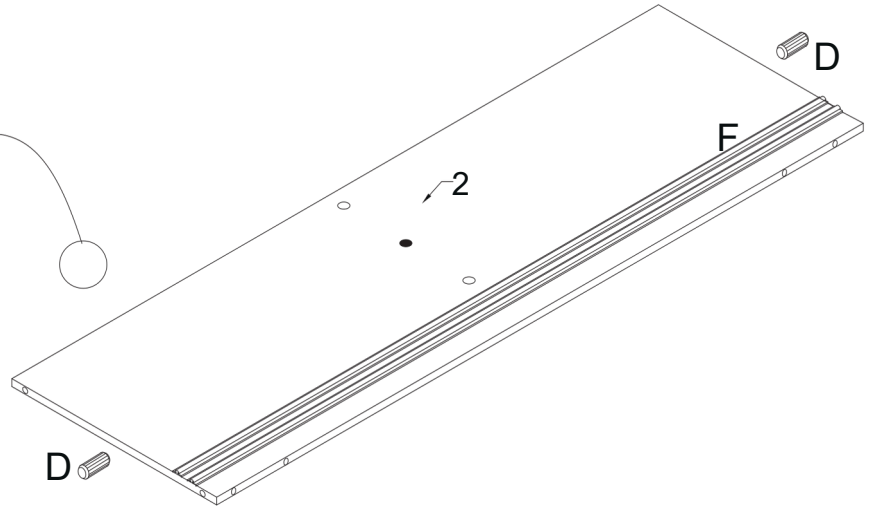
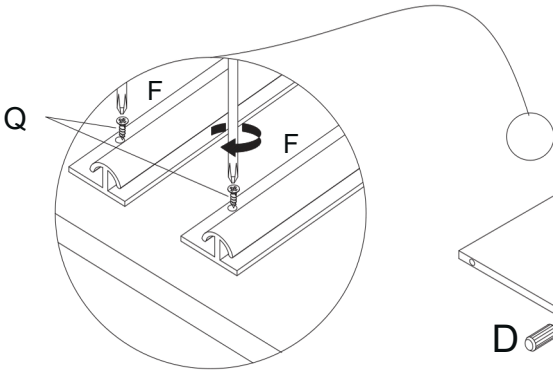
# 4



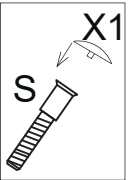
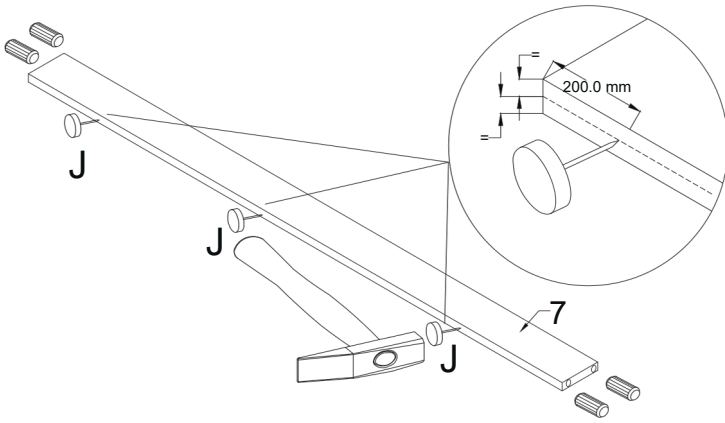
5



6

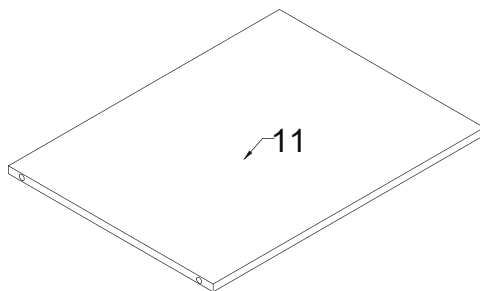


7

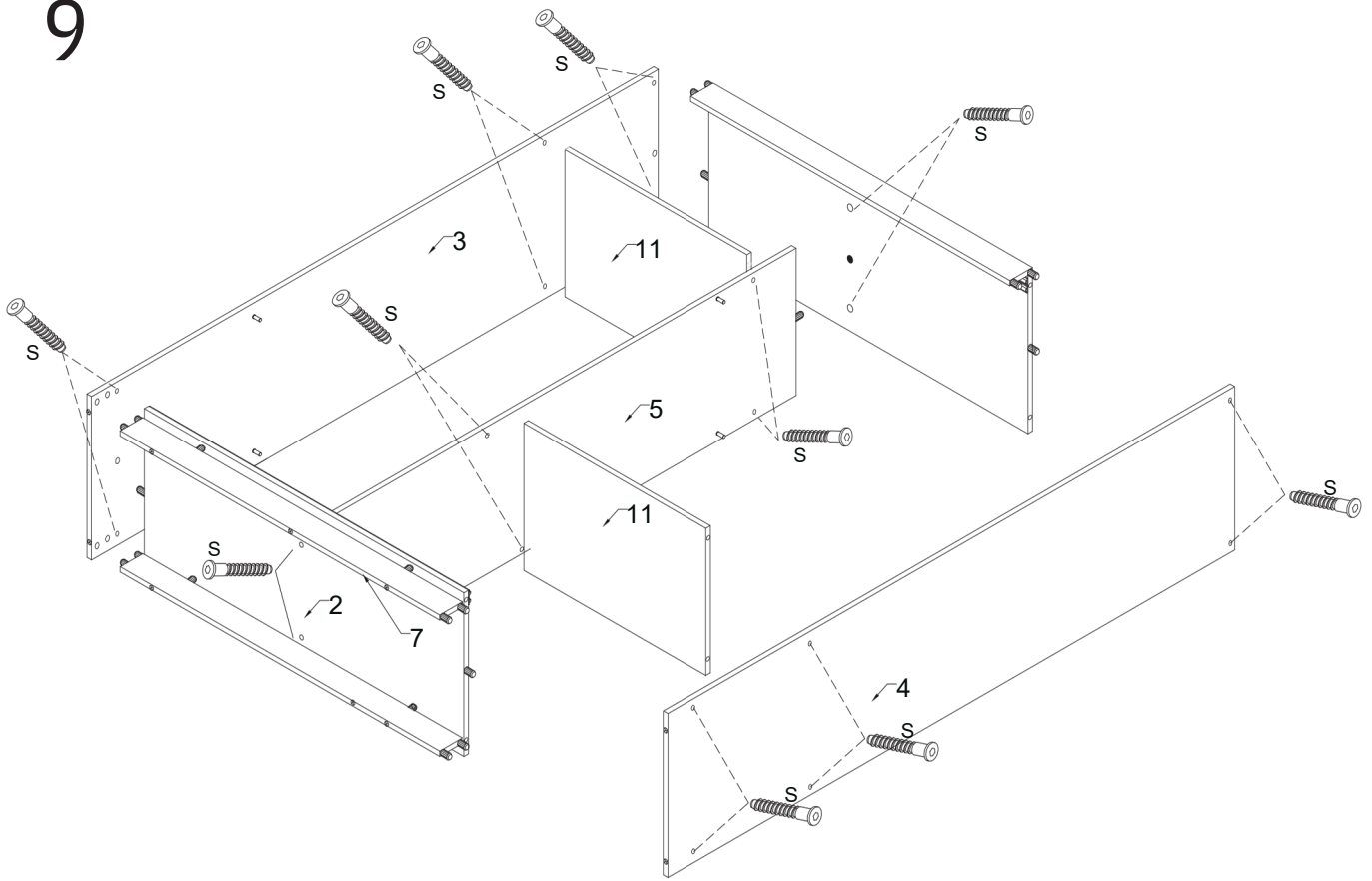


8

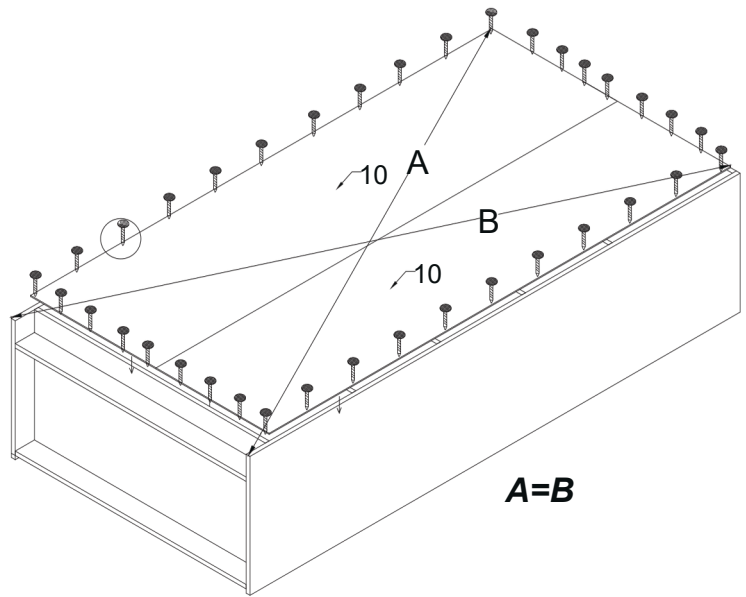
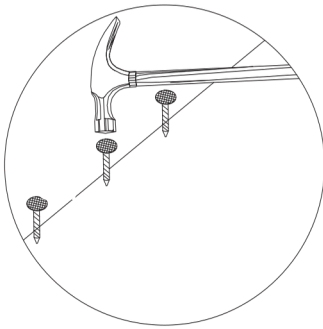
x2



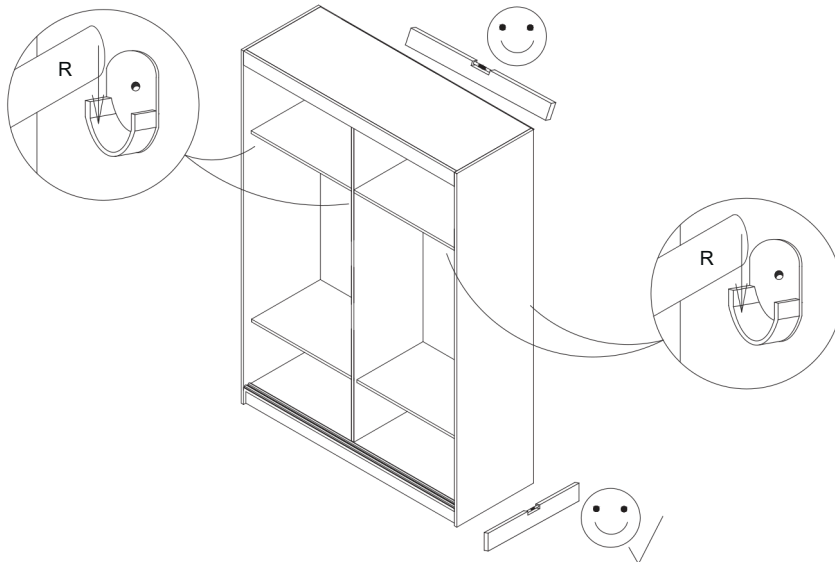
9



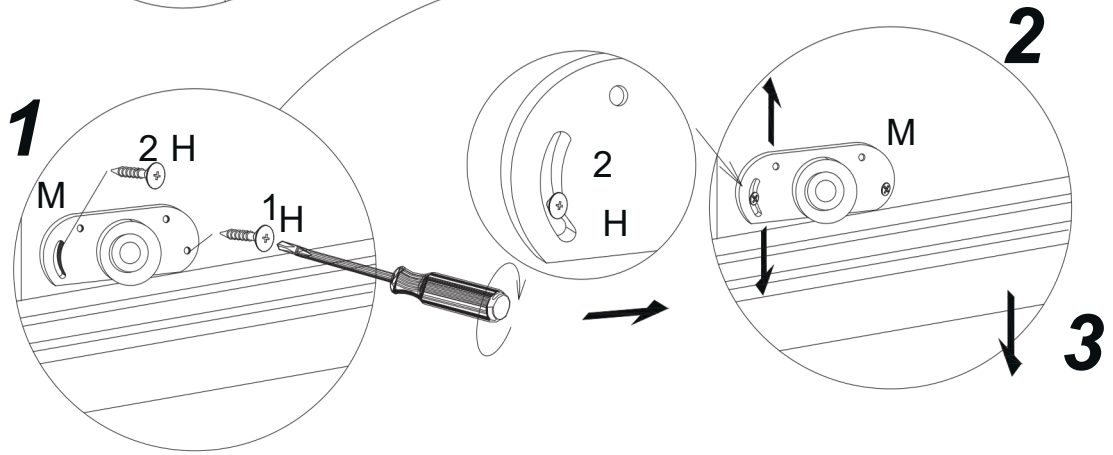
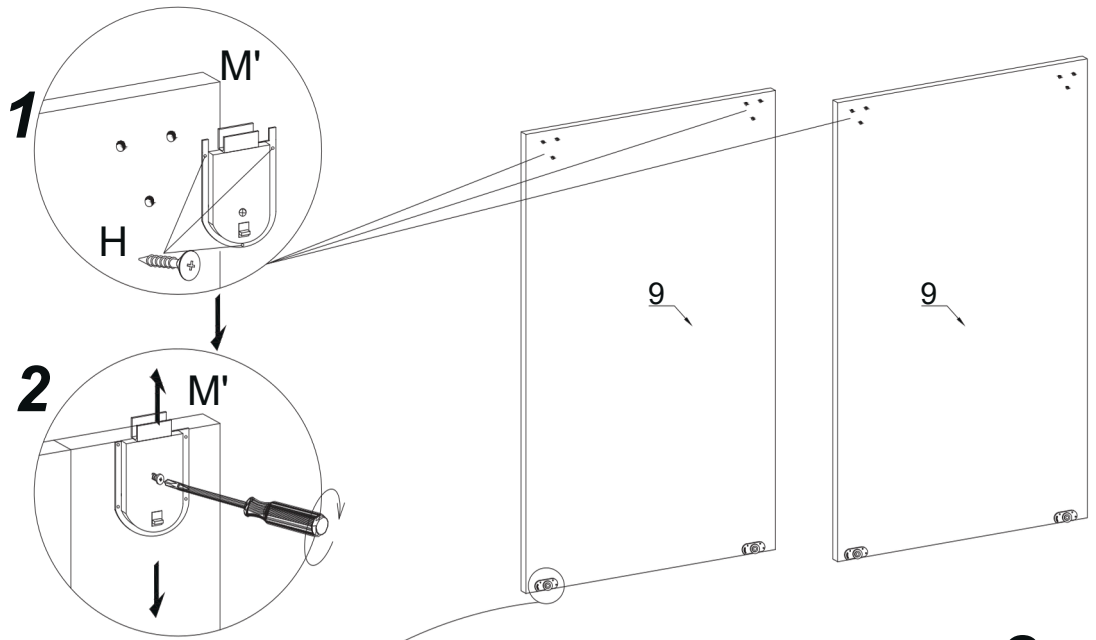
10



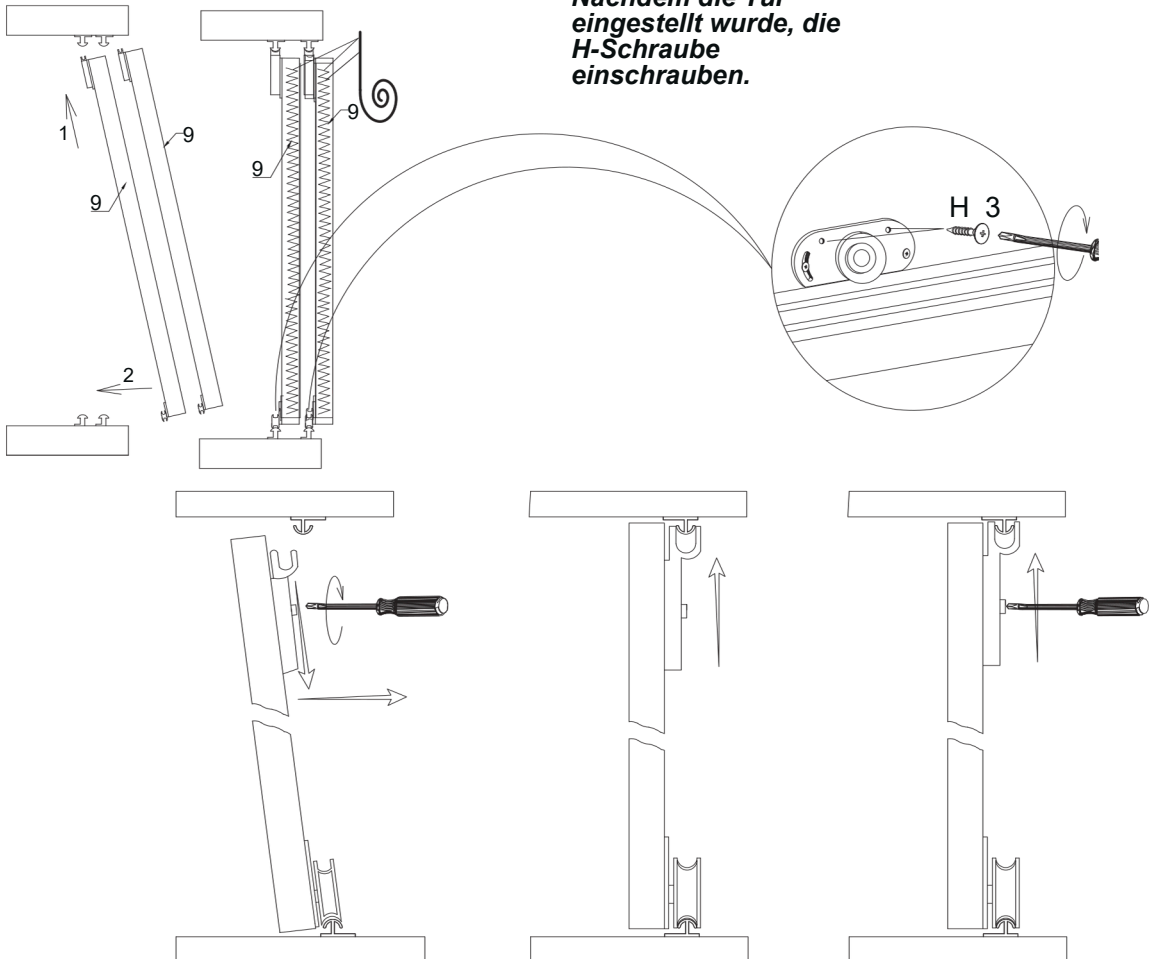
11



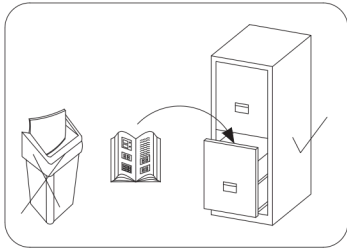
# 12



*Nachdem die Tür  
eingestellt wurde, die  
H-Schraube  
einschrauben.*



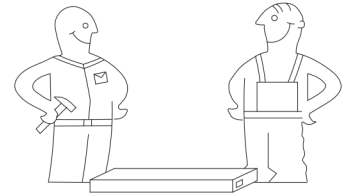
**D MONTAGEANLEITUNG**  
**GB ASSEMBLY INSTRUCTIONS**



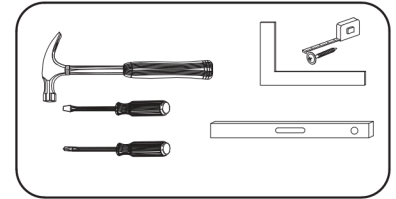
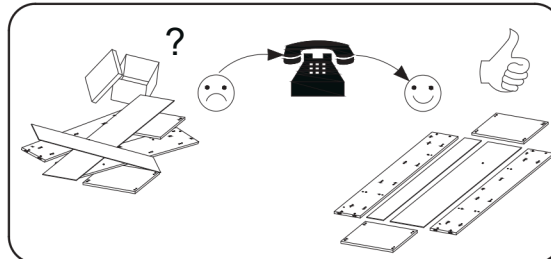
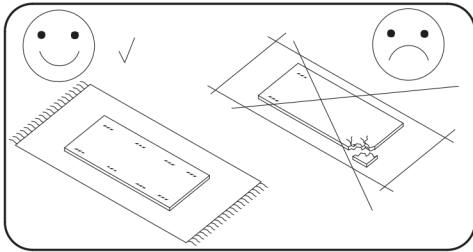
Montagezeit Time  
to assemble



3 hours  
3 zeit



Tools required Werkzeuge erforderlich



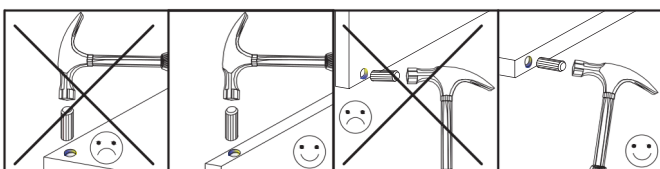
**Achtung / Caution**

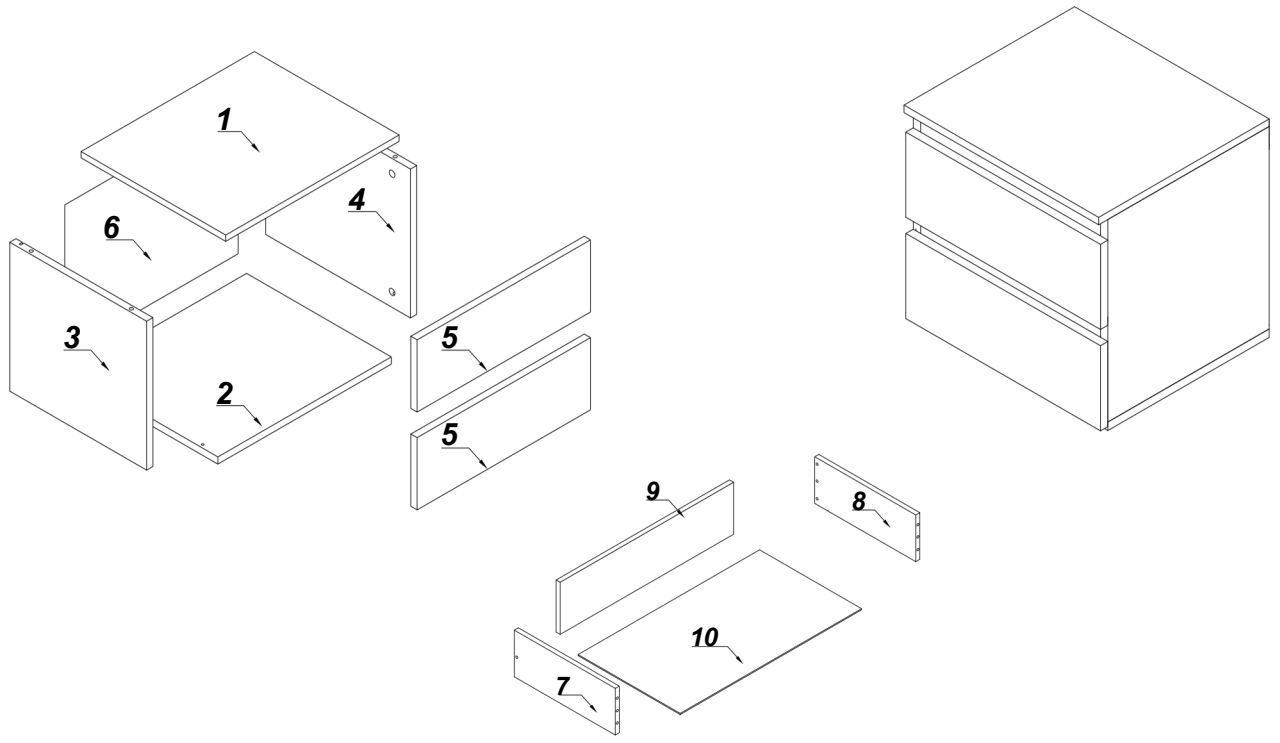
EN> READ AND GET FAMILIAR WITH THE WHOLE INSTRUCTION BEFORE THE PROCESS OF INSTALATION  
 DO NOT THROW AWAY THE PACKAGING UNTIL THE INSTALLATION IS SUCCESSFULLY DONE  
 THE INSTALLATION SHOULD BE DONE ON THE FLAT SOFT AND CLEAR SURFACE SUCH AS CARDBOARD  
 UNDER NO CIRCUMSTANCES SHOULD YOU INSTALL THE ELEMENTS IN CASE OF ANY FAULTS OR DAMAGE  
 THE INSTALLATION ELEMENTS AS FITTINGS SHOULD BE KEPT IN A PLACE INAVAILABLE FOR CHILDREN  
 FAULTY OR DAMAGED COMPONENTS SHOULD BE COMPLAINT BY GIVING THE NUMBER OF THE ASSEMBLY INSTRUCTION  
 IF THE DAMAGED COMPONENT IS INSTALLED THE COMPLAINT WILL NOT BE ACCEPTED

DE> VOR BEGINN DER MONTAGE MUSS MAN DIE INSTRUKTION GENAU DURCHLESEN  
 MAN MUSS DIE PACKUNG BEHALTEN BIS MAN DIE GANZE MONTAGE ERFOLGREICH NICHT BEENDET  
 DIE MONTAGE MUSS MAN AUF EINER GLATTEN WEICHEN UND SAUBEREN FLÄCHE AUS ÜBEN  
 FEHLERHAFTE ODER BESCHÄDIGTE ELEMENTE DARF MAN AUF KEINEN FALL MONTIEREN. AUF KEINEN FALL DARF MAN  
 FEHLERHAFTE ODER BESCHÄDIGTE ELEMENTE MONTIEREN .  
 DIE MONTAGEELEMENTE WIE BESCHLÄGE MUSS MAN UNZUGÄNGLICH VON KINDER HALTEN  
 FEHLERHAFTE ODER BESCHÄDIGTE ELEMENTE MUSS MAN NUR MIT NUMMER DER INSTRUKTION REKLAMIEREN  
 FALLS DAS BESCHÄDIGTE ELEMENT MONTIERT WIRD WIRD DIE REKLAMATION NICHTBERÜCKSICHTIGT

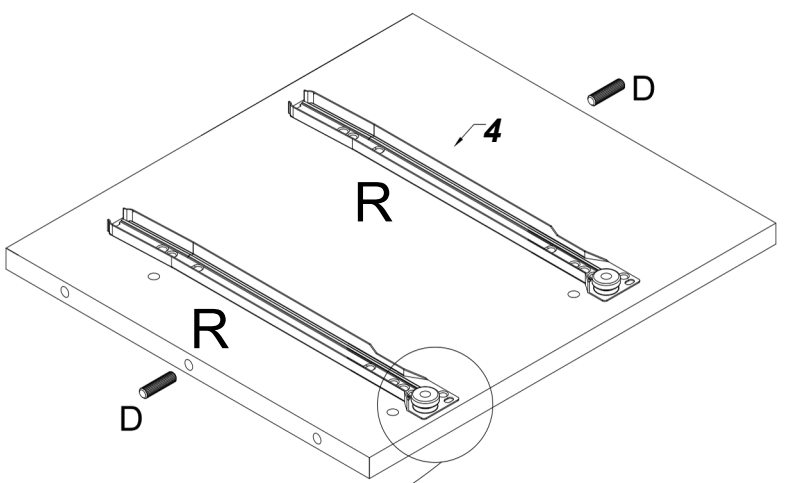
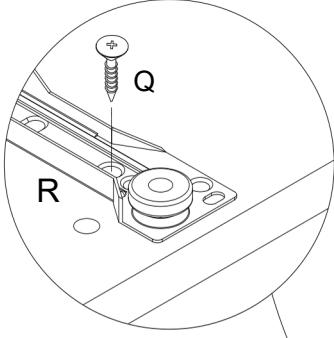
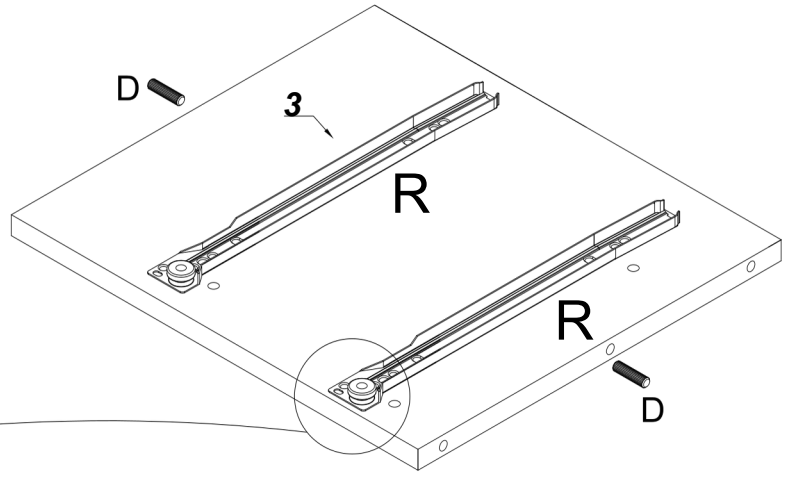
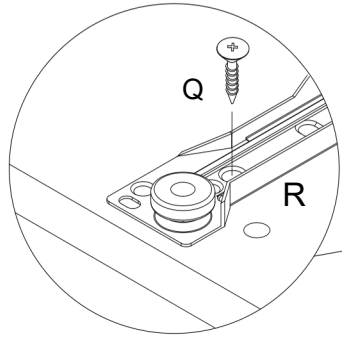
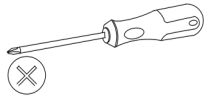
**AKCESORIA / ZUBEHÖR/ACCESSORIES**

8.0x35  D	7.0x50  O	 A	 U	 GW	 R	3.0x13  Q
16	12	12	1	30	2	24



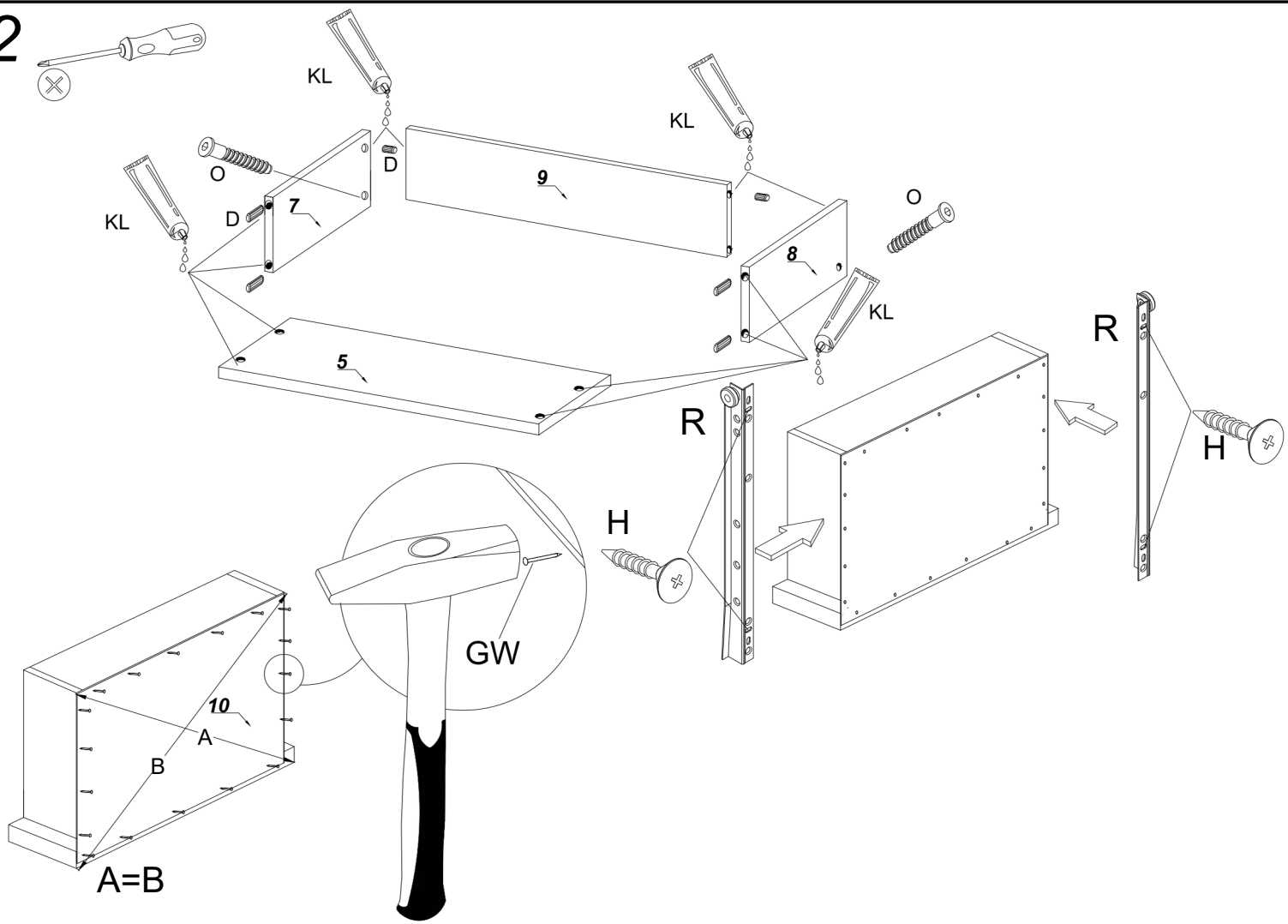


1

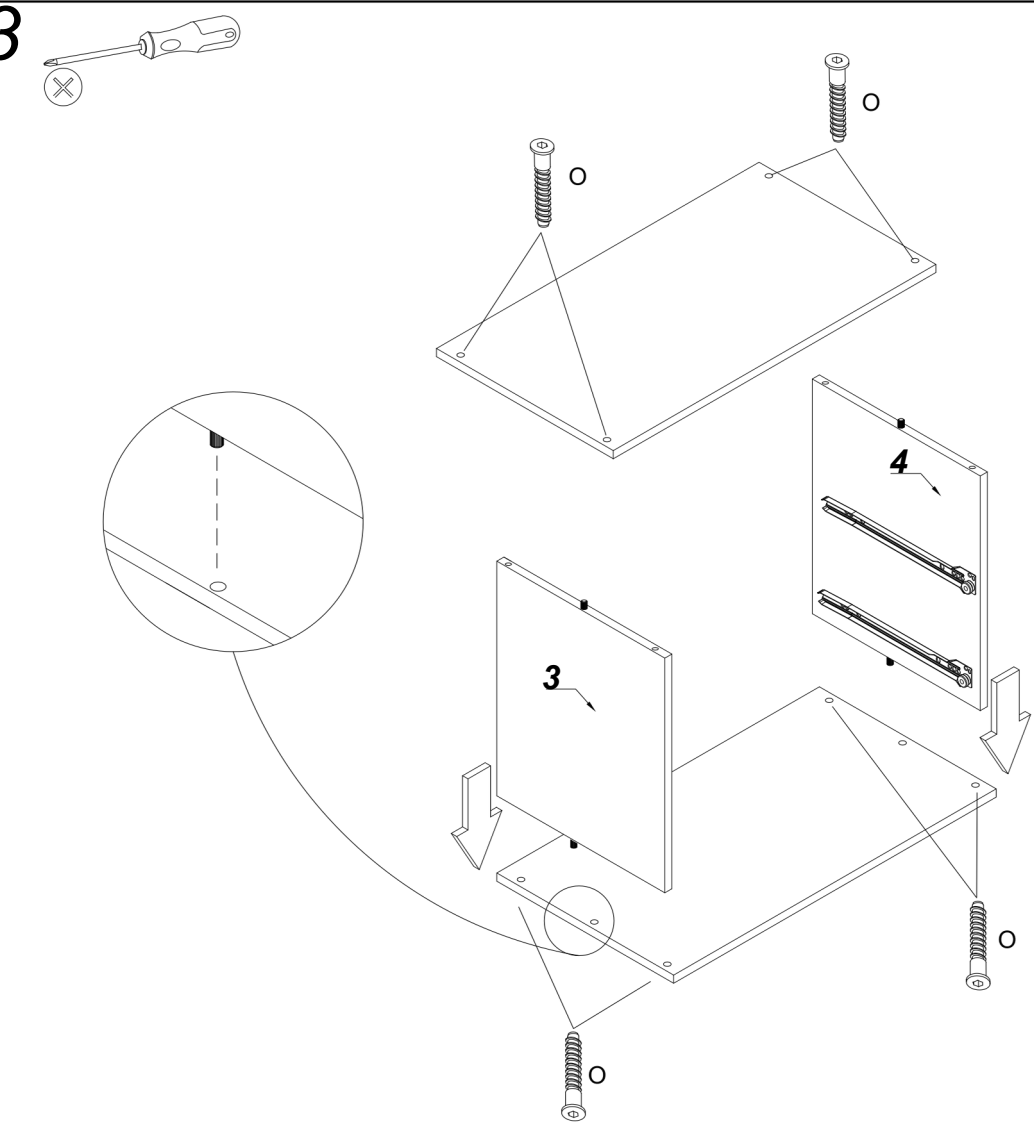




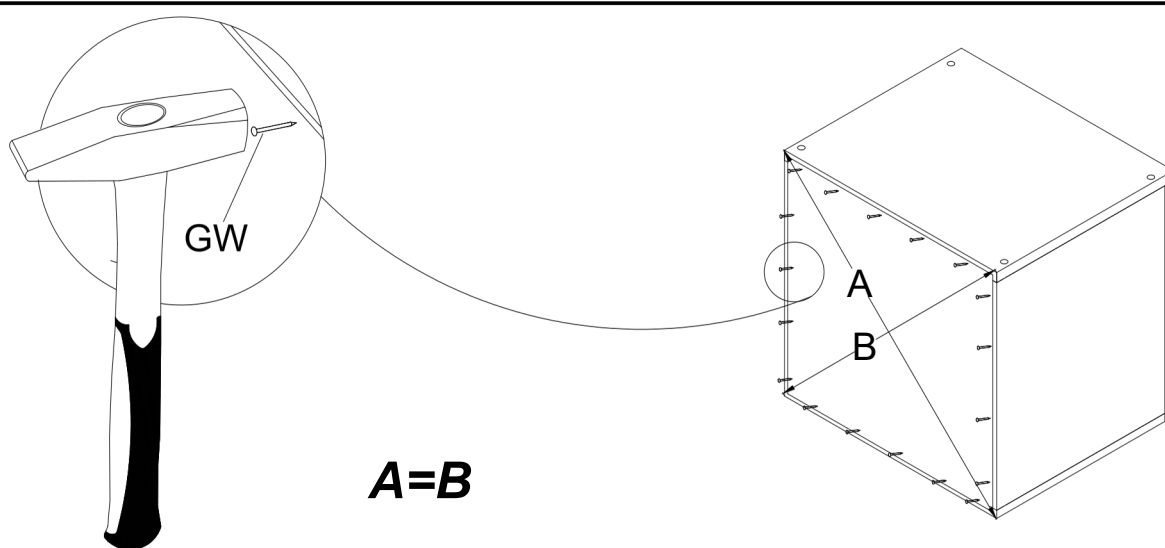
2



3



4



**GRUNDSÄTZE ZUR MÖBELNUTZUNG UND PFLEGE**  
**GUIDLINES FOR FURNITURE USE AND MAINTENANCE**

**D**

1. Die Möbel sind nur in trockenen Räumen unterzubringen, wo sie gegen schädliche Witterungseinflüsse geschützt werden können.  
 2. Die Montage von Einzelteilen ist gemäß Montageanleitung durchzuführen.  
 3. Der Montageplatz der Möbel sollte so gewählt werden, dass die Möbelstücke horizontal ausgerichtet werden können.  
 4. Die Möbel sind nur ohne zusätzliche Belastung zu bewegen. Beim Verschieben und Anheben können dauerhafte Schäden entstehen. Bei der Bewegung soll immer nur an senkrechten Elementen wie Seitenflächen oder Beinen gehalten werden. Waagrechte Bauteile wie Platten, Schubladen, dürfen dabei nicht beansprucht werden, weil sie beschädigungsfähig sein können.  
 5. Die Möbel dürfen nicht übermäßig belastet werden, denn eine Überbelastung kann dauerhafte Schäden verursachen.  
 6. Während der Möbelnutzung soll der Zustand der Verbindungen kontrolliert werden. Möbeloberflächen sind nur mit speziellen dazu geeigneten Möbelpflegemitteln zu reinigen.

**GB**

1. Furniture should be used in rooms which are dry and protected against the harmful influences of weather conditions.  
 2. Furniture should be assembled in accordance with the assembly manual.  
 3. Furniture should be assembled as close as possible to its intended final location.  
 4. While positioning the furniture, make sure it is levelled.  
 5. Furniture may be moved only by lifting and carrying it over when emptied of its contents. Pushing it over or pulling it along may ruin the furniture permanently. While carrying the furniture over, it must be held by its vertical elements, i.e. side panels or legs. Furniture cannot be held by its horizontal elements prone to destruction, i.e. desktops, drawers, etc..  
 6. Furniture should not be overloaded as this may ruin it permanently.  
 7. While using the furniture, the state of the connections between its elements should be checked if necessary.  
 8. Furniture surface must be cleaned only with furniture maintenance formulas.

