

# ASSEMBLY INSTRUCTIONS

ITEM CODE : IN1395

ITEM DESCRIPTION : **BEDSIDE**



1

Reverse the Bedside top & place the leg as shown & align the leg to match the apron.



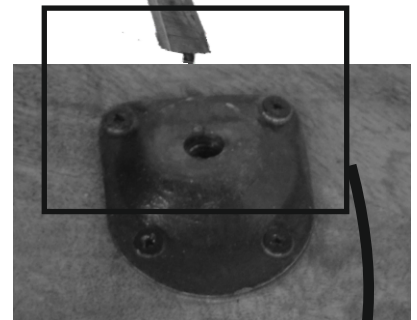
Twist the leg into the iron fitting slot by rotating it.

2



3

Fix the other legs in the similar way



4

Reverse the Bedside straight. Now your Bedside is ready for use



Fig. 1

Twist/rotate the leg

Leg

Bedside Top

Leg slot fitting

