

# ASSEMBLY INSTRUCTIONS

ITEM CODE : IN 3354

ITEM DESCRIPTION : **BEDSIDE**



**1**

Reverse the Bedside top & place the leg as shown & align the leg to match the apron.



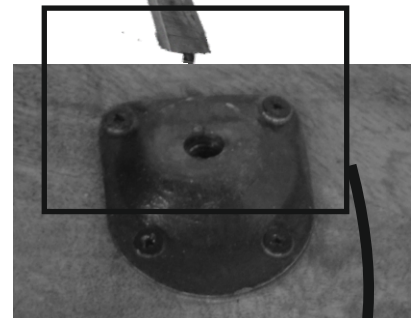
Twist the leg into the iron fitting slot by rotating it.

**2**



**3**

Fix the other legs in the similar way



**4**

Reverse the Bedside straight. Now your Bedside is ready for use



Fig. 1

Twist/rotate the leg

Leg

Bedside Top

Leg slot fitting

