

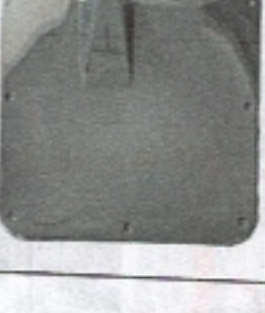


Installation instruction

Check accessories

						
Main body×1	Leg soft bag×1	Backrest soft bag×1	Soft cushion bag×1	Backrest panel×1	Leg backboard×1	15mm screw×2 45mm screw×7 60mm screw×6 70mm screw×5 Coarse screw×12 Shim×4 Couple×1

Installation steps

1. Power on the main body and use the remote control to raise the machine to the highest position for easy installation.



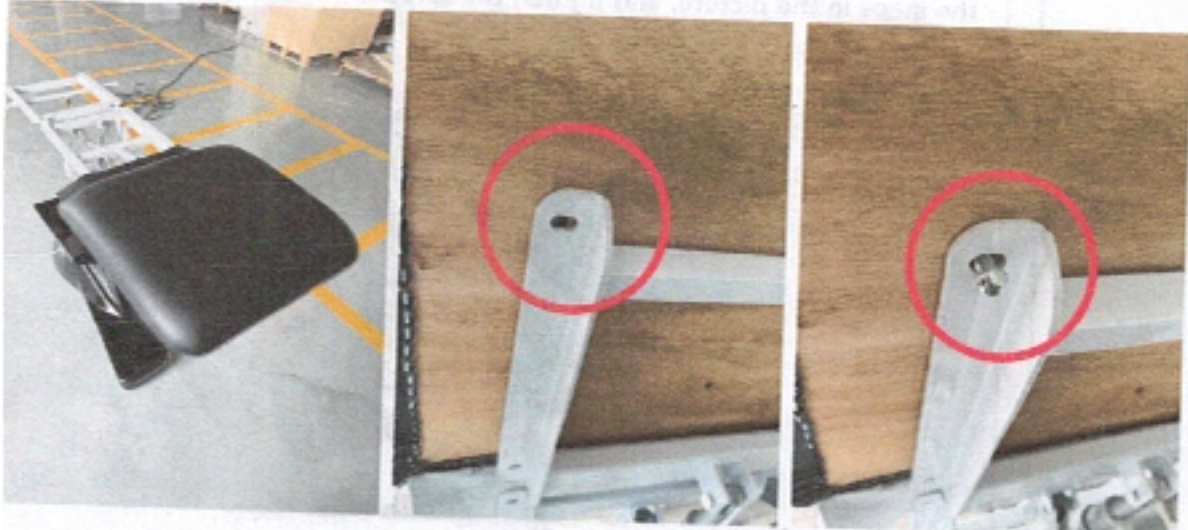
(Long press this key to raise)

2. Find the position of the leg air rod and connect it according to the steps in the picture.



(First, remove the shaft, align the air rod with the position, insert the shaft, and fix it with a wire inserted into the small hole)

3. Install the leg soft pack, align the screws according to the steps in the picture, and tighten the screws.



(The leg soft bag is fixed with a total of 4 thick screws)

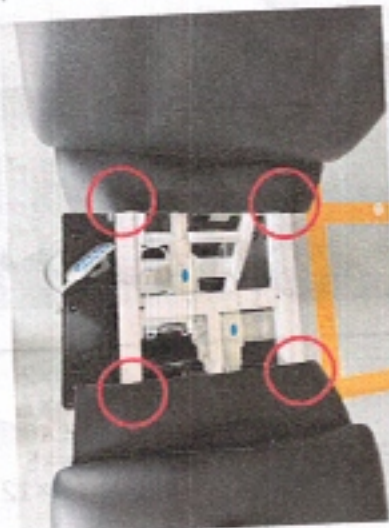
4. Install the backrest soft package, align the screws according to the steps in the picture, and tighten the screws.



(The backrest soft bag is fixed with a total of 4 thick screws)

Importer:
CLP Trading GmbH
Triftenstrasse 93
32791 Lage
Germany
info@clp.de

5, Install the seat package soft pack, align the screw position according to the steps in the picture, and tighten the screw. (Read the steps before operating)



(Poke 4 small holes for easy screw penetration)



(Put the gasket first, then the thick screw)



(The thick screw passes through the small hole poked)



(Connecting the leather requires such a large wrinkle)



(The effect after installation)

6, Install the back panel of the seat package, align the screws (Read the steps before operating)



(Place the hook in the groove position)



(Align the back panel of the seat bag with the appropriate position of the seat bag soft package)



(Fix the hook position by hand)



(Fix the hook with 2 15mm screws)



(The back panel of the seat package is fixed with a total of 6 60mm screws)

7, Install the leg back panel, align the screws according to the steps in the picture, and tighten the screws.



(The leg backboard is fixed with a total of 7 45mm screws)



8, Install the backrest panel, align the screws according to the steps in the picture, and tighten the screws.



(The back panel of the seat package is fixed with a total of 5 70mm screws)