

ASSEMBLY INSTRUCTIONS

ITEM CODE : IN 3300

ITEM DESCRIPTION : **BENCH**

1

Reverse the Bench top & place the leg as shown & align the leg to match the apron.



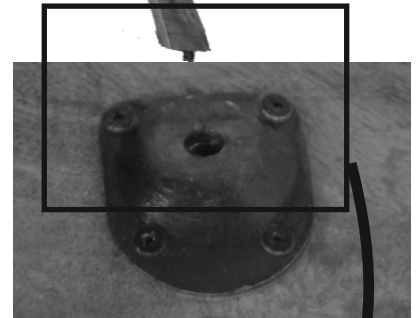
Twist the leg into the iron fitting slot by rotating it.

2



3

Fix the other legs in the similar way



4

Reverse the bench straight. Now your Bench is ready for use.



Fig. 1

Twist/rotate the leg

Leg

Bedside Top

Leg slot fitting

