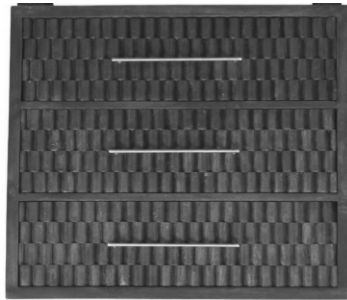


# ASSEMBLY INSTRUCTIONS

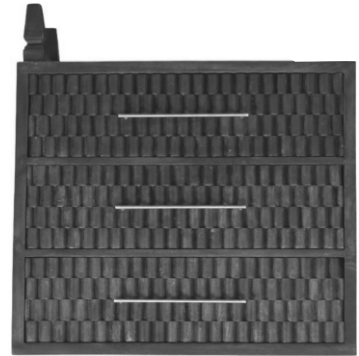
ITEM CODE : IN 4088

ITEM DESCRIPTION : 3 DRAWER CABINET



1

Reverse the cabinet top & place the leg as shown & align the leg to match the apron.



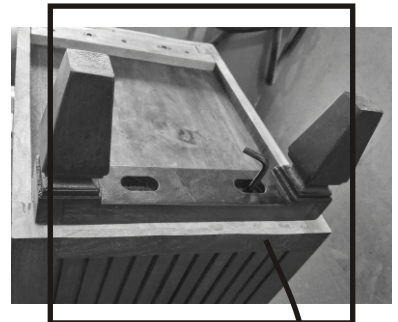
Place the bolt & washer in the cut out & tighten it with allen key provided as in Fig1.

2



3

Fix the other leg set in the similar way



4

Reverse the cabinet straight. Now your cabinet is ready for use.

