

Congratulations and welcome to the next level of ergonomic performance. Only a few steps remain before you experience the ultimate sitting comfort.

We've put together a quick start guide to help you assemble your chair.

BEFORE YOU GET STARTED, A FEW POINTERS



Having a friend to help can make the assembly process even easier



Read the safety information before use



Contact us if you experience any issues

1 Gently slide the backrest out of the box. Remove all remaining parts and check that you have received all the parts against the checklist in the bottom right.



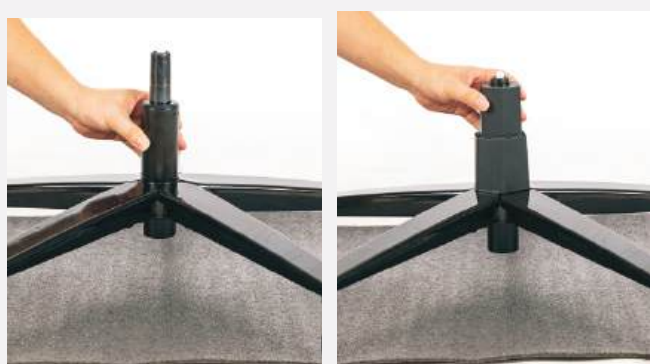
2 Lay out the foam sheets found in the packaging on a flat surface. Insert the five split feet into the middle tube. After they are all in place, tighten the 10*M6 screws



3 Place the wheelbase upside down on top of the foam and insert all 5 casters.



4 Turn the wheelbase the right side up and insert the hydraulic piston. Slide the hydraulic sleeve over the piston.



5 Place the armrest steel plate holes on the seat cushion holes. Then take out the 8*M8 screws in the bag. Screw it all in first, then use the inner hexagon spanner to tighten it all.



6 Remove the 4*M8 screws pre-installed in the backrest using the Hexagon Wrench.



7 Slide the backrest bracket on the right down onto the right recline bracket until it comes to a stop. Insert the M8 screws previously removed from the backrest. Screw them in halfway.



8 Push the left recline bracket up to align with the screw holes on the left of the backrest. Insert the M8 screws, then tighten all 4 fully on both sides of the backrest using the Hexagon Wrench.



9 install the magnetic side covers by aligning them on the top of the backrest brackets. they will snap magnetically in place.



10 Using the H4 Hexagon Wrench to remove the red screw marked out by the red safety tab on the right recline cover red safety tab.



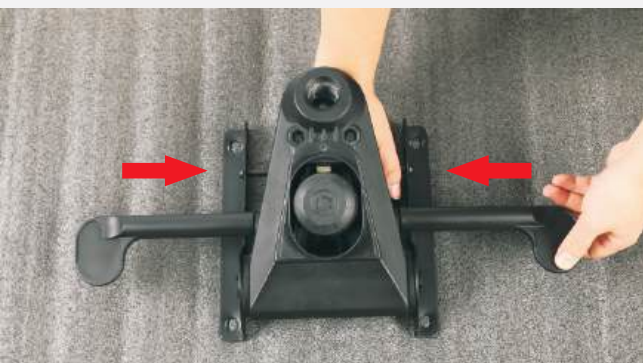
11 Remove the red safety tab. This allows the recline to be used. **Note:** Do not discard the recline safety tab and screw as they can be re-installed for child safety.



12 Lift the chair and gently set it facing downwards.



13 Refer to the sticker label under the seat base for the correct orientation of the tilt levers. Line up the grooves on the inside of the lever handles with the notches and insert fully into the shafts.



14 Ensure the tilt mechanism is facing the correct direction by referring to the same sticker label under the seat base. Attach the tilt mechanism to the bottom of the seat base using the 4*M8 screws, then tighten all 4 fully.



15 Lift the assembled wheelbase and insert the hydraulic piston into the socket of the tilt mechanism.



16 Carefully tilt the chair into an upright position while holding the wheelbase.



17 Congratulations, your chair assembly is complete!



USAGE INFORMATION



BACKREST RECLINE

Pull up FULLY on the lever and lean back slowly until the backrest is at your desired angle, then slowly return the lever to its starting position. Ensure the lever locks back in place.



4D ARMRESTS

Press and hold the 1) front button to move them forward, back angled sideways, 2) inner side button to move them sideways, and 3) lever on the outside of the armrests to adjust the height.



TILT TENSION

Turn the knob clockwise to loosen the rocking tension of the chair, anti-clockwise to tighten. Adjust according to your weight.



ARMREST WIDTH ADJUSTMENT

ARMREST ADJUSTMENT

The distance between armrests can be adjusted. Loosen the M8 screws at the bottom of the armrests. Move the armrests to the desired position, then tighten to secure.



MULTI-TILT MECHANISM

Right lever (while seated): Turn the knob clockwise to increase the lumbar support, anti-clockwise to decrease it. Left knob (while seated): Turn the knob clockwise to raise the position of the lumbar support, anti-clockwise to lower it.



LUMBAR ADJUSTMENT

Right knob (while seated): Turn the knob clockwise to increase the lumbar support, anti-clockwise to decrease it. Left knob (while seated): Turn the knob clockwise to raise the position of the lumbar support, anti-clockwise to lower it.



LUMBAR USAGE

Do not put weight on the backrest while adjusting the lumbar support. Do not attempt to turn either knob past its maximum or minimum points. Do not attempt to turn both knobs at the same time.

PACKAGE CONTENTS

ACCESSORIES BOX CONTENTS

- 1X Chair Backrest
- 1X Chair Seatbase
- 1X Core Of Wheelbase
- 5X Split Feet
- 2X Armrests
- 1X Tilt Mechanism
- 2X Magnetic Side Covers
- 5X Pu Casters (Wheels)
- 12X M8 Screws
- 10X M6 Screws
- 1X H6 Hexagon Wrench + H4 Hexagon Wrench
- 1X H5 Hexagon Wrench
- 1X Hydraulic Piston+Sleeve
- 1X Height Adjustment Tilt Lever Handle
- 1X Tilt Lock Lever Handle
- 1X Magnetic Head Pillow

SAFETY INFORMATION

- Do not push the chair around when a person is sitting in it.
- Do not push down on the backrest when a person is reclined.
- Do not use the chair with more than one person.
- Do not sit at the front edge of the chair.
- Do not place all your weight on the backrest only.
- Do not stand on the chair.
- Sit in the center of the chair, with your back to the backrest.
- Do not place your hand or fingers near the recline mechanism.
- Keep the red recline safety tab screwed in place to prevent accidental backrest adjustments when there is a child around.

The recommended weight is:

- Size S: <90kg (<200lbs)
- Size R: <100kg (<220lbs)
- Size XL: 80-180kg (175-395lbs)

The chair should only be used as

